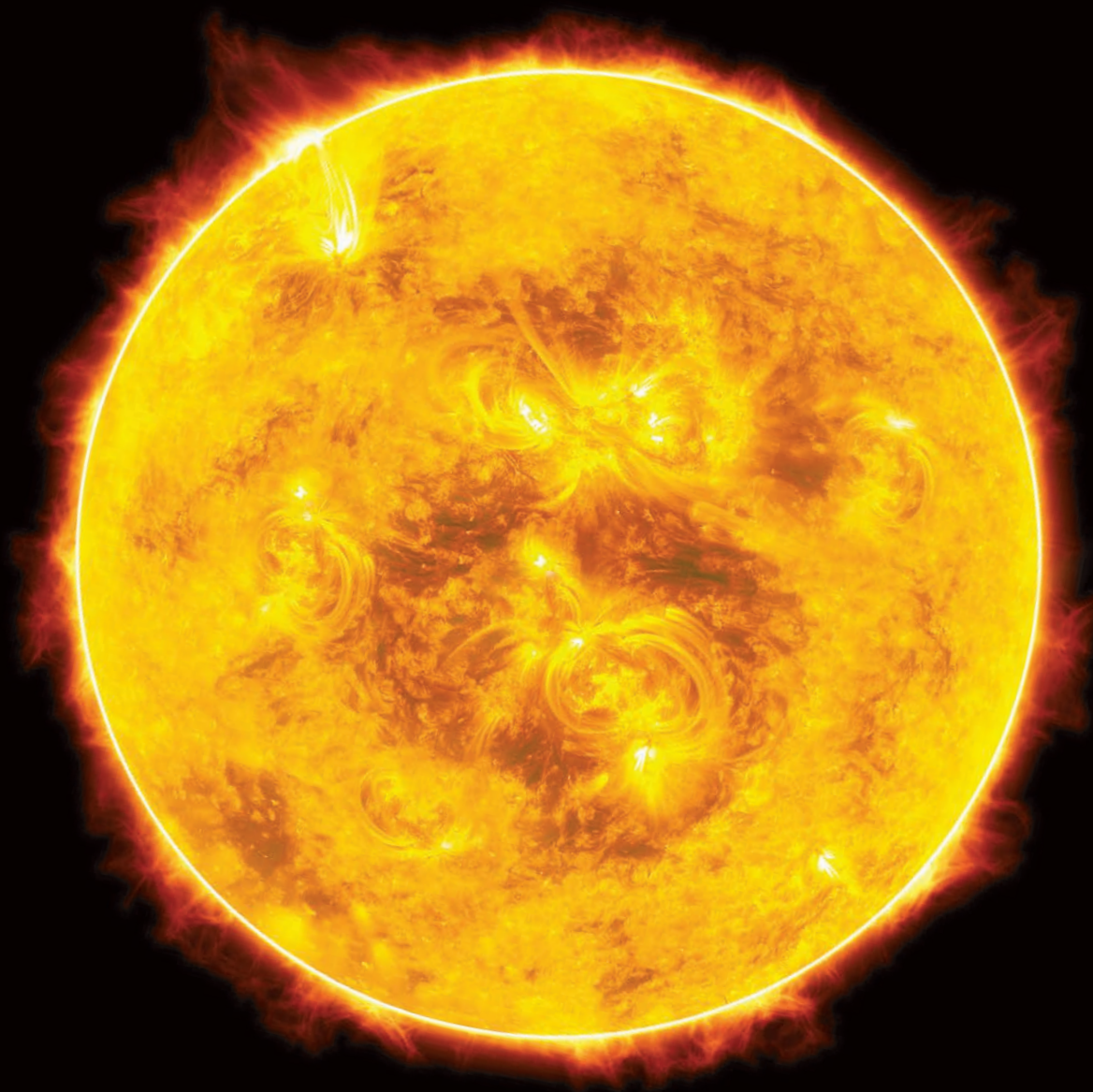


# illumina

lighting solutions



C/19

CI/SfB (63)X

See a product you like and need more in-depth information?



For further information, technical details and downloads scan the QR code or visit [www.illumina.co.uk/gridspot-anti-glare](http://www.illumina.co.uk/gridspot-anti-glare)

Scan the QR code on the product page to find out more... /

OR type the web address into your browser /



## What you will get... /

- Simple to use filters to get the **exact variant** you need
- Product demo videos to give you an understanding of the aesthetic and the scale
- Technical data sheets provide in-depth technical data
- Dimensional working drawings
- Installation images
- Images of all sizes

## Colour temperature /

The colour temperature corresponds to the light colour of a light source and is measured in Kelvin (K) /

The higher the colour temperature, the cooler and bluer a white light source will look, the lower it is, the warmer it will appear:

**2700K - Extra Warm White /** Similar feel to a traditional incandescent lamp. This colour is ideally suited to applications such as living rooms, bedrooms and restaurants.

**3000K - Warm White /** Ideal for living areas, great for a cosy lighting atmosphere, giving a pleasant warm effect. This softer colour can be used in home lighting, galleries, retail stores, libraries and office areas.

**4000K - Neutral White /** Great for general lighting, creating a cleaner, clinical, whiter light. This colour is often used in showrooms, leisure environments and office areas.

**6000K - Pure White /** Pure white has blue tones and helps convey a sunny daylight type light that can be associated with pleasing outside conditions.

## Colour rendering /

The colour rendering of a light source is an indicator of its ability to realistically reproduce the colour of an object /

The effect of a light source on the perceived colour appearance to the human eye is expressed in the colour rendering index. Commonly known as CRI, it is based on a scale of 0-100 with the top value of 100 based on illumination by a 100W incandescent light bulb.

The first digit in Illumina's colour temperature reference indicates the CRI, with the last two digits representing colour temperature, e.g. /930 would have a CRI of 90+ with a colour temperature of 3000K.

## Lumen output /

Lumen output is a measurement of the total quantity of visible light emitted by a light source /

It's also commonly known as brightness or light output. The lumen output, combined with the beam angle, is a measure of light spread from the source. Broader beam angles will result in more spread-out light, but the lumen output will also be less intense. Alternatively, narrower beam angles will have less spread but a higher light intensity.

# about **illumina** / our philosophy is simple

With over **40 years** of lighting experience, we understand that design, quality and service must underpin all that we do.

**Illuma** Lighting is part of a specialist lighting group, established in 1945, with over 150 employees in the UK /



illumina /  
about illumina

**Illuma** is a leading lighting manufacturer situated in Castle Donington, UK, at the heart of the East Midlands /

With a focus on serving both domestic and export markets, the company provides innovative lighting solutions for retail, commercial, and leisure applications.

**Illuma** takes great pride in its commitment to producing cutting-edge products that offer exceptional technical, aesthetic, and photometric performance while remaining affordably priced. In addition to its portfolio of award-winning contemporary lighting products, **Illuma** is well-known for providing outstanding customer service.

With a reputation for industry-leading support, the company boasts impressive levels of performance, regularly achieving **99%+ OTIF** rates on standard product deliveries.

**Illuma** stands behind the quality of its products, offering a **5-year** guarantee on all purchases, as well as comprehensive after-sales support services.



Our products /  
are rigorously tested to the  
**highest standards**, both internally and  
externally to give you confidence  
in our **5 year** guarantee.



**Daniel**  
Hamburger /  
Managing Director



**Eric Riley** /  
Sales & Marketing Director



# Quality + compliance

**illuma** lighting /  
is **committed** to providing  
high quality lighting products  
that conform to the highest  
standards, meeting all  
regulatory requirements.



The UKCA marking /  
is the applicable product marking regulation  
in **Great Britain** (England, Scotland, and Wales)  
to replace the **CE** marking for goods being  
placed on the market.

It is a mandatory requirement for products  
sold in the **UK** and signifies that the product  
conforms to the relevant **UK regulations**,  
safety standards, and conformity  
assessment procedures.



All of our products /  
we test all of our products for **CE** conformity  
to demonstrate compliance with **European  
Union (EU) safety**, performance, health, and  
environmental protection standards.

**CE** marking is a mandatory conformity marking  
for products sold within the **EU**, indicating that  
they meet the minimum legal requirements.

For our customers, **CE** marking means that they  
can have confidence in the safety, quality and  
performance of our products.

## Sustainable compliance /



with the WEEE directive requires all producers and importers to take responsibility for treating and recycling all electrical equipment at the end of their useful life /

Via Ecosurety, Illuma has put in place a comprehensive system for the collection and disposal of our non-household lighting equipment. This includes the removal of all non-recycled and non-recyclable packaging from all our products.



Our goal is to achieve **carbon neutrality**, by 2030, which means that we aim to balance the amount of carbon dioxide emissions we produce with an equivalent amount of carbon removal or reduction measures /

This **commitment** is crucial to addressing climate change and creating a sustainable future for generations to come.

## Conformance /

Illuma are NQA accredited with ISO 9001:2015. We operate within a structured framework, managing and improving processes, reducing costs through efficiency, and enhancing customer satisfaction /

Our ISO 9001 quality system helps us to identify and mitigate risks, prevent problems, and improve our reputation and competitiveness.

We aim to deliver consistent, **high-quality** products and services while enhancing our operational and financial performance.



## Policies /

We have implemented comprehensive policies addressing environmental sustainability, achieving **zero emissions**, combatting modern slavery and promoting equal opportunities /



Environmental



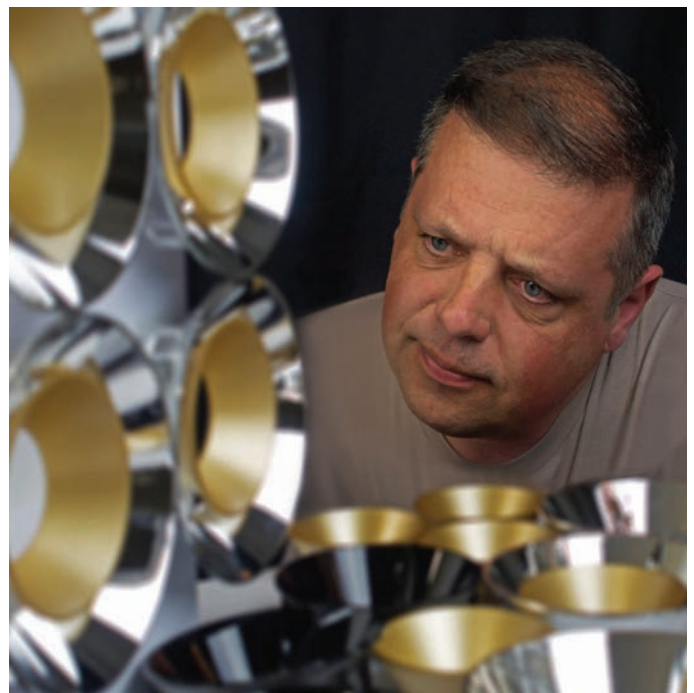
Modern slavery



Equal opportunities



Net Zero



illumina

# Design + development

As a leading lighting manufacturer, we take pride in our commitment to **excellence** in design.

We understand the importance of not only creating visually appealing lighting fixtures / but also ensuring they **perform** to the highest standards.



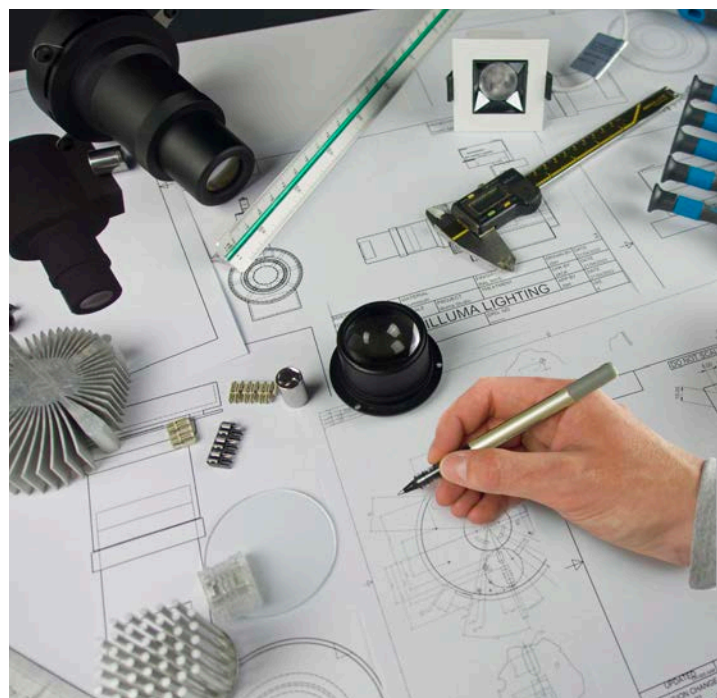
## Product design /

We are proud to boast an experienced UK product design team / ensuring cradle to grave **design support** to maximise performance and reliability.



## UK

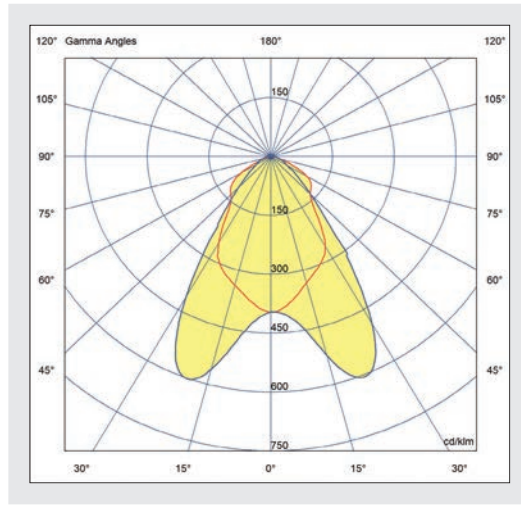
Manufactured / on site in Castle Donington and **100% tested** to ensure best in class quality and compliance.





## Lighting performance /

At **Illuma**, we believe that exceptional lighting performance and compliance is essential / We are a proud member of the Lighting Industry Association and have been since its inception.



## Efficacy / lm/W

Referred to as a **lm/W** (lumens per watt) value, details the performance of a light source in turning power into light /

The higher the value, the more efficient the product is. **Illuma** quotes total system efficacy to provide our customers with accurate and truthful data for their entire system, not just the LED.



## 5yr /

With onsite facilities and testing capabilities / we are confident enough to offer **5 year** guarantee on all of our products.



We take regulatory compliance seriously / and make sure our products meet all relevant **regulations**, including safety and performance standards.



## Lighting standards /

All new products are rigorously tested in our UK laboratory / to ensure all the latest **British Standards** are met, including BE EN IEC 60598-2022 + A11:2022 & BS EN 61000.



## The **team** / The **people** behind illumina are as important as the company itself.



We're a diverse family at Illumina with years of lighting industry experience /

**Illumina** are an agile group of expert lighting designers, marketers, product developers, quality control engineers, technical experts, project managers and sales executives with a shared commitment to communication, collaboration and delivering the best lighting solutions.



### LED and colour consistency /

Our light engines utilise the **highest quality** LEDs and circuitry to eliminate colour variations from one fitting to the next. We aim to deliver superior LED colour consistency across our entire range.



### High stock holdings & next day delivery /

We maintain **extremely high** levels of components and finished item stock in our 120,000ft<sup>2</sup> UK warehouse. Next-day delivery is available on a wide range of standard products.

### Specifically designed optics /

Unique lighting solutions require specifically designed optics to **maximise** a products performance and efficiency. We pride ourselves on our product innovation, design and portfolio of award-winning products.



### Customisation /

At **Illumina**, we recognise the importance of specialisation. Not every application is suitable for an off-the-shelf solution, that's why we go to great lengths to ensure that the environment you envisage is the effect you achieve.

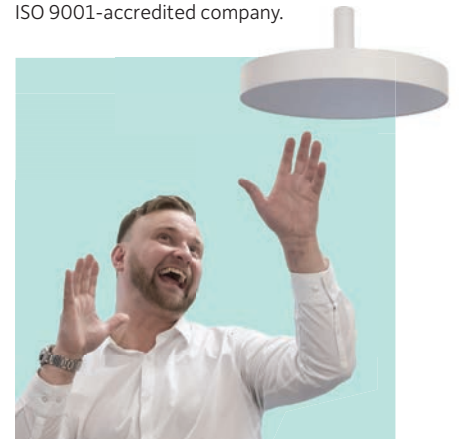


### High CRI values /

Our LED luminaires have **high CRI values** up to 98 CRI meaning they can produce excellent colour rendering.

### ISO 9001 registered company /

We at **Illumina** are committed to delivering the best lighting solutions and maintaining our excellent reputation whilst meeting the needs of our clients. **Illumina** is an ISO 9001-accredited company.







## FREE lighting design service /

Our in house team of **LIA qualified** Lighting Designers use the latest lighting design software to provide clients with a complete lighting design proposal.

## Flicker free dimming /

We offer a variety of **flicker free** dimming solutions. Controlling the light levels of a space not only brings about energy savings but can dramatically affect the mood and ambience of a space.



illumina / about / the-team



## Quality assurance & 5-Year guarantee /

We **build and maintain** strong relationships by supporting clients every step of the way. We are so committed to quality that the entire range is supported by our renowned 5 year guarantee.

## Design for ease of installation /

All **illumina** products are designed to consider both the installer and installation process. Simplifying and saving time during installation ensures that solutions are fitted within tight project time frames.



## Professional reputation /

Our **illumina** external sales team are fully trained and conversant in everything lighting. They have a high level of experience and understand the project process from start to finish.



## Future-proof lighting solutions /

We have created a **portfolio** of flexible lighting solutions that are future-proof. Consistent spotlight mounting options and track systems allow clients to add and remove fittings at their leisure, reducing costs and maintenance.

## Energy efficient lighting solutions /

We use only the **latest technologies** and materials to offer some of the most energy efficient lighting solutions on the market, all with a high luminous efficacy.



## Family business /

We are a **proud family business**, established 40+ years ago. We have an in-depth experience in the commercial lighting industry dealing with Architects, Interior Designers and Electrical Consultants, through to Electrical Distributors and Electrical Contractors.

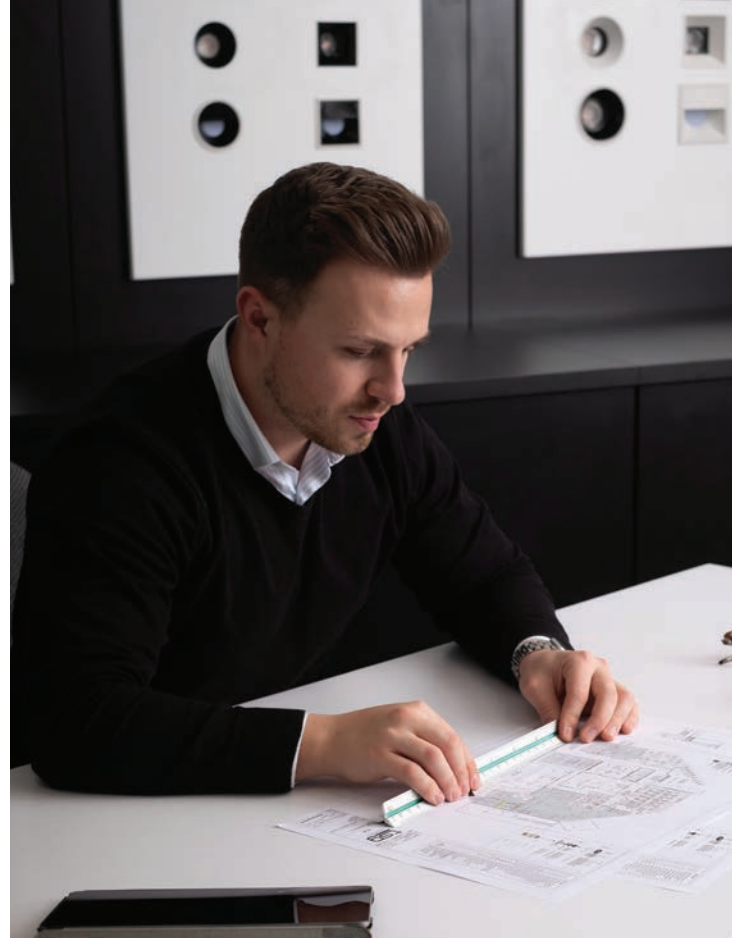
## Lighting design /

Our lighting designs are all about creating atmosphere and ambience alongside the practical application of light.

Lighting should not just be seen as a functional solution, but instead as an intrinsic part of the experience.



illumina /  
lighting design



## Services you can expect /



We combine our technical knowledge with an understanding of how light can transform or amplify the mood of a space. We don't settle for anything less than quality, and our accurate, detailed design work gives our customers a real feel for what they can achieve with **illumina**.

**James Sesin**, *Lighting Designer*  
at **illumina** Lighting.



## Technical advice

On suitable  
products  
and design  
layouts /

## Lighting design timeline / How to deal with us...

Contact **illumina** and speak to one of our experienced lighting professionals.



Arrange a **site visit** and product demonstration to gather project details.



Our in-house **LIA** certified lighting design team put together a full lighting **design & schedule**.



01



**HD 3D**

walkthroughs

Help you to envisage the final outcome /



**LUX**

calculations

Accurate readings to give you confidence in the Illuma solution /



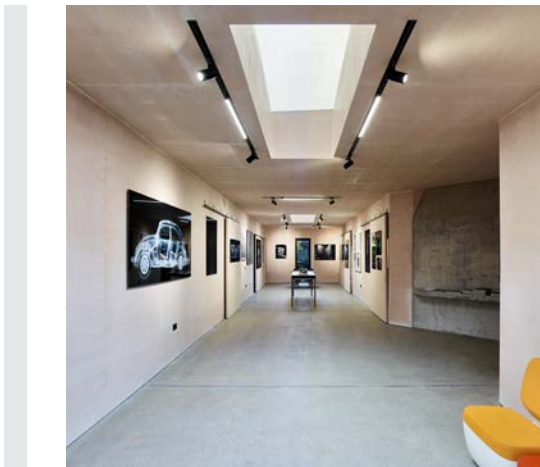
**Detailed**

3D renders

We create high quality raytracing images to help you see your project come to life /



Process Gallery 3D render /



Process Gallery completed project /

**Receive and review** the design then discuss any changes with the team.



4

**Request** a quotation.



5

**See your** lighting design come to life.



6

## Our services / We're here for you **every step** of the way.

We build and maintain  
strong relationships by  
**supporting** our clients  
at every stage.



Our in-house design and product development teams are dedicated to maintaining quality throughout our operations /

This **commitment** is evident from the sourcing of the latest and highest quality materials to the design of the most innovative and award-winning products in the industry.



At **illumina**, we merge technical expertise with a deep understanding of how light can enhance and influence the ambience of a space /

Our unwavering commitment to **quality** ensures that we never settle for anything less than excellence. Through our meticulous and precise design work, we provide our customers with a tangible sense of what they can achieve with **illumina**.



**illumina** offers exceptional levels of service /

We strive to ensure that all bestselling products are always in stock, with **over 95%** of all SKUs stocked at around 10 weeks' inventory level. This allows us to dispatch over **80%** of orders complete on the same day that they are received. The remaining 20% are dispatched within 10 days, or in the case of special products, within the quoted lead time.

Through investments in research and development, manufacturing, distribution, human capital, and training, **illumina** is well positioned to respond to the changing needs of our marketplace.



Our technical expertise is backed by **Illuma's** team of experienced Lighting Designers who are **LIA** qualified /

They use the latest lighting calculation and design software to provide clients with a comprehensive and complete lighting design proposal, free of charge. **Illuma** adheres to agreed application guidelines, reports, and architect/site layouts, while creating dynamic and intelligent lighting designs that maximise the impact and efficiency of our products.

Unique lighting solutions require a unique team with the technical knowledge to drive our business forward and source better solutions for the increasingly demanding environments and market conditions around the world.



**Illuma** is committed to equal opportunities /

As an employer, we strive to create a **challenging** working environment in which personal fulfilment, job satisfaction, and continuous quality improvement are actively pursued by all staff.



**Sustainability** /

is a key consideration for **Illuma**, as we are mindful of the potential impact that our business activities could have on the global environment. To minimise this impact, we use recyclable materials wherever possible and work in partnership with our subcontractors and external suppliers to reduce our environmental footprint. In addition to complying with the guidelines of **WEEE**, **EuP**, **REACH** and **RoHS**, we also explore the latest technologies to make our products more energy-efficient and reduce their carbon emissions.

**Illuma** is proud to be a member of **Ecosurety**, the UK's leading producer responsibility compliance scheme that is making a positive contribution to recycling in the country.



## Web resources + support /

Our web resources provide an in-depth knowledge bank of all our products and the latest support articles.

View some of our latest online support articles... /



**LED drivers** & power supplies guide /



**Dimmability** guide /



**Emergency** lighting guide /



**IP Ratings** & ingress protection guide /



**Fire rating** guide /



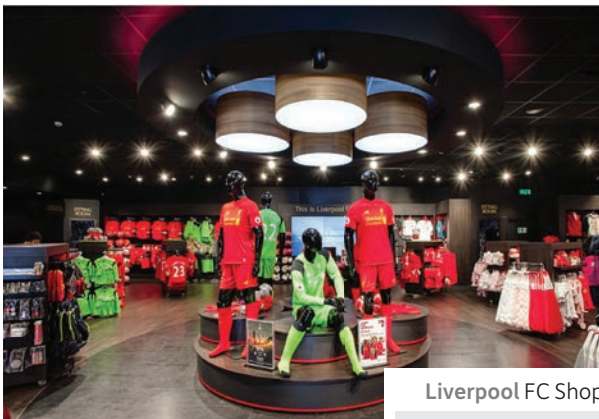
**Lamp** table guide /



**Wall** mounting spotlights guide /

## Case studies /

Learn how some of **Illuma's** most notable customers used our lighting solutions to deliver exceptional experiences to their visitors and transform their environments.



Liverpool FC Shop

### Retail /

With over **40 years of experience** in the lighting industry, we have successfully implemented many multi-national rollouts for big name brands. We work with many retailers on all aspects of their lighting and are experienced in all areas of retail.



Taunton School Chapel

### Religious buildings /

**Illuma** have worked with a variety of clients on lighting places of worship and understand that these kind of applications need to be guided by the architecture and the nature of the worship within the building.



Southampton University

### Education & schools /

Our **wide range** of LED luminaires offer low energy lighting solutions for educational applications and can create substantial savings. We understand that unique areas require specialised lighting solutions.



Bala Bay / London

### Eating & drinking /

**Illuma** have a history of working with some of the most recognisable brands from across the eating & drinking industry. We aim to dramatically transform the aesthetics and possibilities of how a space is illuminated.

See our latest project installations throughout this brochure, or go online / **Illuma** products have featured in a number of prestigious lighting schemes including; **Universal / Disney / Selfridges / Harvey Nichols / Timberland / Next / BMW / Adidas / Nike / Liberty's / Halfords / Superdry / Caffè Nero / Crew Clothing / Greggs / Seasalt / TUI / The Tate Edit / Tortilla / Louis Vuitton** and **Pandora** to name a few.

illuma / projects /  
case studies



Bradgate Park Visitor Centre

## Art galleries & museums /

Art gallery & museum lighting needs to fulfil a variety of specifications. Our range of luminaires are perfectly suited for these **ever-changing** environments, providing flexibility and highlights for dramatic effect.



Bankside / London

## Commercial offices /

Using all our **lighting expertise** we are able to transform any commercial & office space into a dynamic work environment. As no two projects are the same, we tailor our service to fulfil ambitious design briefs.



Tate Edit / London

## Entertainment & leisure /

**Illuma's** products have featured in a number of entertainment & leisure lighting schemes across the world. Our award winning portfolio of contemporary lighting is ideal for such applications.

## Industry spotlight / **Sheppy's** Cider

located in Somerset, is a stunning example of restaurant and retail lighting at its best.



**Illuma** wanted to help **Sheppy's** create a flagship environment to promote their brand by installing a brand new lighting scheme.

To do this, the aim was to dramatically increase the lux levels in the main area of the visitor centre - particularly over produce - to entice customers to make a purchase. Emphasis was also placed on making the bar and restaurant areas darker to create a more seductive, cosy atmosphere.



Sheppy's are one of the oldest premium craft cider making families in the world with a history that goes back more than 200 years /

Sheppy's new 'House of Cider Visitor Centre' brings together a butchery, deli, and cafe stocked with the finest locally sourced produce. Visitors can also explore their full range of award-winning craft ciders and even book a guided tour or tasting event to discover some of Sheppy's oldest cider-making secrets.

At the start of this exciting project, **Illuma** were asked to propose a series of lighting designs for Sheppy's. The opportunity to work closely with such an exciting and historic British brand in revamping their visitor centre, was one that excited all involved. The final lighting scheme for Sheppy's Cider used a variety of luminaires including the **Gridspot** & **Floodline** combined with **Twizzle** downlighters.







01

✓  
**Vibrancy**  
& brightness  
was **required** around  
the butchery, deli  
and cafe areas.



vibrant  
+ functional

**The Solution** / When **Sheppy's** first approached **Illuma** they knew what type of environment they wanted to create but didn't know how to achieve it. With over 40+ years lighting experience this is where **Illuma** were able help to transform **Sheppy's** rough ideas into real life working solutions.

## Industry spotlight / Bechstein Pianos

in Manchester, boast a superb mix of showroom, practice and teaching studios.



The ability of the Prospots to be dimmed using DALI was a crucial factor for the showroom. It was essential for them to adjust the lighting and ambience in the room especially for the stage area in which guest pianists can come and perform to a seated audience. Linear track runs were also designed to create drama and depth in the showroom, and extra flexibility with all areas being covered by the carefully planned track layout.



C. Bechstein, a renowned manufacturer of premium upright and grand pianos, was founded in Berlin in 1853 /

Their instruments are known for their outstanding and rich sound, captivating generations of pianists and music lovers for over 150 years.

illumina was approached to create a comprehensive lighting design proposal for Bechstein's showroom in Manchester, which is currently the only official Bechstein showroom in the country. The opportunity to collaborate with such a historic brand and enhance the beauty of the exquisite pianos was one that certainly excited illumina's lighting design team.

The objectives were to achieve the appropriate lux levels to accentuate the instruments in the primary showroom and practice rooms. This would not only enhance their appearance but also enable pianists to play with precision.

Additionally, there was a need to showcase a mural on the stone wall and ensure that the space was flexible and capable of accommodating future requirements.

To achieve this, throughout the main showroom illumina used the DALI Dimmable Prospot, paired with linear runs of Control Track. The Prospots' high CRI (Colour Rendering Index) and lumen performance made it the ideal choice to emphasise the wood grains in the space and add a 'wow factor' to the pianos.

Another area of focus for illumina was the practice rooms. These are six purpose-built, sound insulated practice and teaching studios available to hire. The Infinia Silver cone were used in here which provide a comfortable amount of light to be able to accurately practice and teach whilst the silver cone gives the room a classy finish and aesthetic.

Finally, a mural depicting Sir Stephen Hough CBE, a British-born classical pianist, composer, and writer, was highlighted using the Linia Blade S Wallwash. illumina utilised this luminaire to uniformly wash the stone wall with a neutral white kelvin temperature, creating a contrast with the warm white ambient lighting to make the mural stand out and become an impressive focal point.

The representatives from C. Bechstein have expressed their delight with the illumina products and solution – so much so that illumina are now being specified and are working towards their latest C. Bechstein flagship store in London W1 which is due to be opening early 2024.





01

✓  
**Soft & seductive lighting** was required in the practice and teaching studios.



# grand + exquisite

**The Solution** / When Bechstein approached Illuma they had a vision of the environment they wanted to create but didn't know how to achieve it. With over 40+ years lighting experience this is where Illuma were able help to bring new light to Bechstein's flagship showroom.

# Contents

## Spotlights

26-53

Pages



Torp 28



Prospot 30



Gridspot 32



Rotaspot 42



Lumapar 44



Lumapar GU10 46

## Linear

54-77

Pages



Linia Blade S 56



Linia Blade R 60



Linia Blade T 62



Revolva 70



Biline 72



Linia 74

## Track systems

78-87

Pages



1-Circuit Track 230V 82



3-Circuit Track 230V 84



3-Circuit Track 230V Recessed 84

## Project downlights

88-105

Pages



Twizzle 90



Project 90 Open 92



Project 90 Cone 94



Gridspot Anti-Glare 34



Probeam Select 36



Probeam Frame 38



Probeam 40



Rocket E27 48



Topspot E27 50



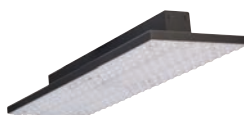
Marktrack 24V 52



Floodline 64



Quadroled Linear 66



Quadroled 68



Linkline 76



Control Track 230V 86



Control Track 230V Recessed 86



Project 90 Gimbal 96



Project 90 Wallwash 98



Framelight Mini 100



Proseal F 102



Project 50 104

# Contents *continued*

## Commercial downlights

106-131

Pages



Infinia 108



Infinia Mini 112



Arc 114



Highlux 160 122



Highlux 175 124



Twinlux Low-Glare 126

## Feature

132-145

Pages



Zube Pendant 134



Disk Pendant 136



Disk Wall 138

## Exterior

146-155

Pages



Signspot 148

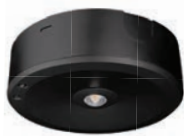


Signled 150

## Emergency

156-165

Pages



Emlux Duo 158



Emlux Twinspot 160



Emlux Discrete 162



Framelight 116



Highlux 135 118



Highlux Surface 120



Hexseal 128



Lightseal 130



Upline 140



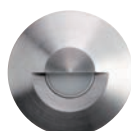
Lumaseal 142



Via 144



Pathfinder 152



Camino 154



Emlux Sign 164



Emlux Bulkhead 164



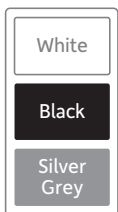
Emlux Sign 164

# Mounting options

Track adaptor dimensions (mm):



Track adaptor colours:



Note: All Chrome spotlights are supplied with a **Black** Track Adaptor / Surface Mounting Plate / Pendant Stem.

**1-Circuit** Switched Track Adaptor

230V  
**16A**  
For use with Illuma 1-Circuit 230V Track / (see page 82).



ON / OFF switch for flexibility



Sliding adaptor lock



Why the arrows – see page 83

**1-Circuit** Multi (Global Trac Base) Track Adaptor

230V  
**16A**  
For use with Global Trac Base 1-Circuit Track /

Concord Lytespan 1 & Lytespan LP tracks (Note: not compatible with Illuma 1-Circuit 230V Track).



Universal adaptor



Adaptor locking lever



Slim profile

**3-Circuit** Switched (Global Pro) Track Adaptor

230V  
**16A**  
For use with Illuma 3-Circuit 230V Track / (see page 84).

3-Circuit 230V Recessed Track / (see page 84) & many other European brands.



3-Circuit selector inc. OFF



Adaptor locking lever



Slim profile

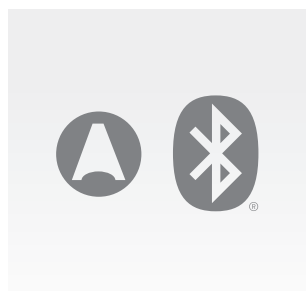




### 3-Circuit Switched Casambi Track Adaptor

**230V**  
**16A** For use with Illuma 3-Circuit 230V Track / (see page 84).

3-Circuit 230V Recessed Track / (see page 84) & many other European brands.



Casambi dimmable / Bluetooth®



3-Circuit selector inc. 0 for OFF



Adaptor locking lever



### 3-Circuit Control Track (Global Trac Pulse) DALI Track Adaptor

**230V**  
**16A** For use with Illuma Control Track 230V / (see page 86).

Control Track 230V Recessed / (see page 86) & many other European brands.



DALI / DALI 2 dimmable



3-Circuit selector inc. 0 for OFF



Adaptor locking lever

### Surface Mounting Plate

For Surface Mounting on flat surfaces or a BESA box / Electrical components totally enclosed in fire proof enclosure.



Four way cable / conduit entry



Captive cover screws



Surface or BESA box mountable

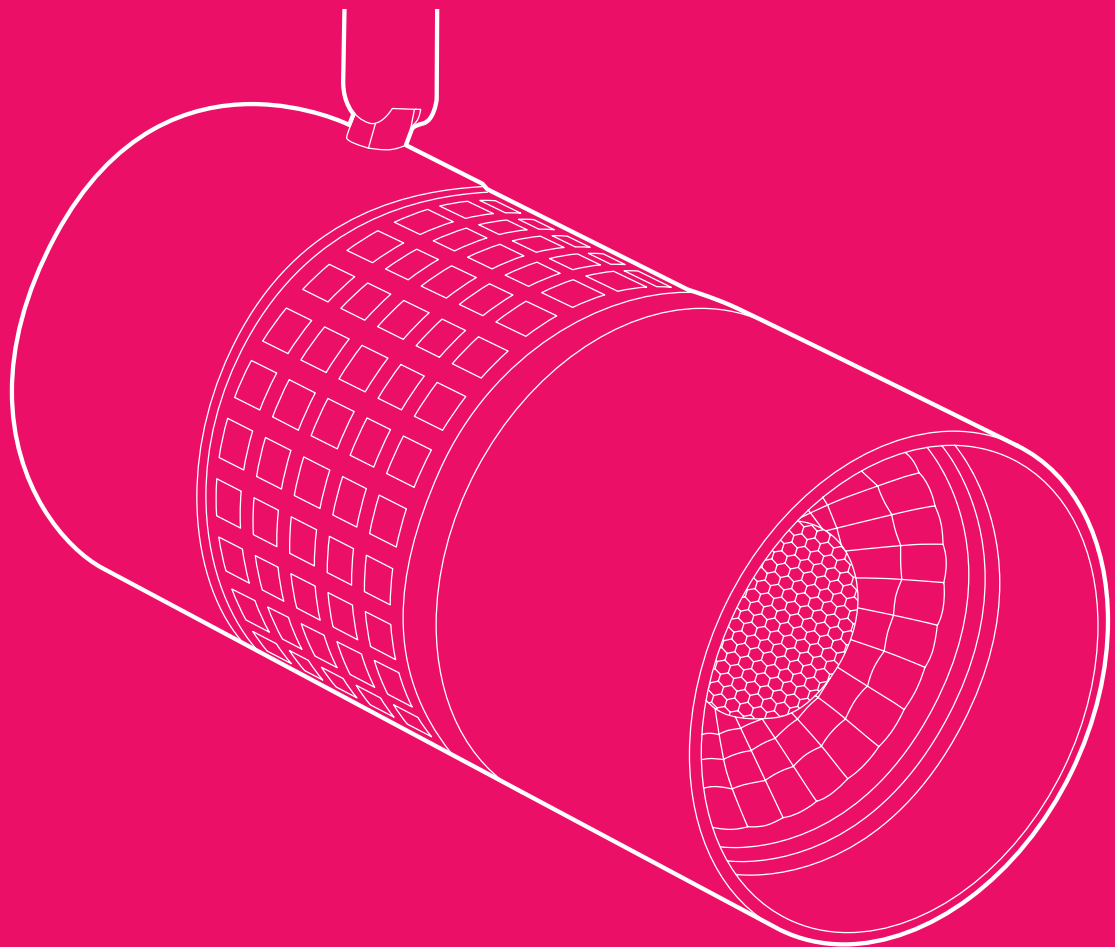


### Pendant Stem

Pendant Stem / Available in 300mm, 500mm or 1000mm lengths.

# Spotlights

---



Accent lighting adds texture, focus and shape to general lighting by creating shadows and highlights for dramatic effects.

# Spotlights product range

03

A contemporary range of highly innovative spotlights, ideal for applications that require a flexible solution.



Torp

28



Prospot

30



Gridspot

32



Gridspot Anti-Glare

34



Probeam Select

36



Probeam Frame

38



Probeam

40



Rotaspot

42



Lumapar

44



Lumapar GU10

46



Rocket E27

48



Topspot E27

50



Marktrack 24V

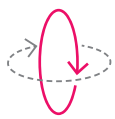
52

# Torp



For further information, technical details and downloads scan the QR code or visit [www.illumina.co.uk/torp](http://www.illumina.co.uk/torp)

A sleek, cylindrical spotlight range available in five lumen outputs and a choice of four beam angles with a CRI of 98. Ideal for retail and display applications that require a high CRI and a clean look.



Vertical tilt 90°  
Horizontal rotation 355°

Torp comes in a range of options to suit any installation:



Anti-glare option



Honeycomb louvre option



Standard option



Advanced lens technology



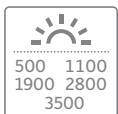
Can be aimed vertically



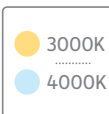
Discreet heat sink

## Options available:

### Lumen output



### Colour temp.



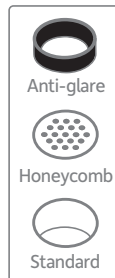
### Body colour



### Track mount



### Style options

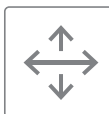


## Specification:

### LED chip / CRI



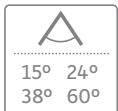
### Adjustable



### Dimming options



### Beam angles



### Body sizes



### Surface mount



### Vertical mount



### IP rating



### Anti-glare





# Torp

## Meridien Modena / Southampton, UK

Southampton based luxury car dealership with prestigious high-performance sports cars. Torp luminaires were specified to highlight the detail and beauty of these iconic motors utilising the 98CRI to bring out the best colour definition.

# Prospot



For further information, technical details and downloads scan the QR code or visit [www.illumina.co.uk/prospot](http://www.illumina.co.uk/prospot)

A flexible range of elegant spotlights specifically designed for retail and display applications. Unobtrusive and available in a variety of lumen outputs and beam angles, with optional anti-glare accessories.



Prospot accessories are available to provide an anti-glare solution if required:



Anti-glare ring / Honeycomb



Barn door accessory



Crisp and clean optic



Can be aimed vertically



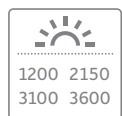
Discreet heat sink



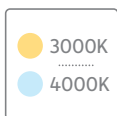
Black body without accessory

## Options available:

### Lumen output



### Colour temp.



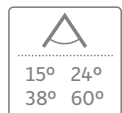
### Body colour



### Track mount



### Beam angles



### Body sizes



### Surface mount

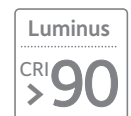


### Vertical mount

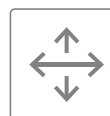


## Specification:

### LED chip / CRI



### Adjustable



### IP rating



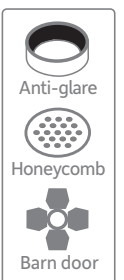
### Anti-glare



### Dimming options



### Accessories





C. BECHSTEIN  
W. HOFFMANN  
Zimmermann

# Prospot

## C. Bechstein Centre / Manchester, UK

The Northern Flagship centre in Manchester boasts a superb mix of showroom, practice and teaching studios plus a dedicated recital area. A high CRI was required to pick out subtleties such as the woodgrain.

# Gridspot



For further information, technical details and downloads scan the QR code or visit [www.illumina.co.uk/gridspot](http://www.illumina.co.uk/gridspot)

A range of distinct spotlights available in four lumen outputs and a choice of beam angles with a CRI of >80. Ideal for retail, leisure and display applications.



**Gridspot** is designed so that the heat sink forms part of the aesthetic:



Small black (1400lm)



Large white (≥2400lm)



Crisp and clean optic



Can be aimed vertically



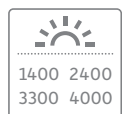
Clean aesthetic



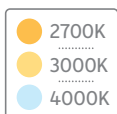
Black option

## Options available:

### Lumen output



### Colour temp.



### Body colour



### Track mount



### Beam angles



### Body sizes



### Surface mount



### Vertical mount

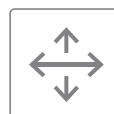


## Specification:

### LED chip / CRI



### Adjustable



### IP rating



### Dimming







**BODY FOCUS**  
FITNESS

# Gridspot

Body Focus Fitness / Bristol, UK

The studio and lighting were designed to be functional, yet make clients feel at ease during their workout, providing them with a path to a healthy lifestyle.

# Gridspot Anti-Glare



For further information, technical details and downloads scan the QR code or visit [www.illumina.co.uk/gridspot-anti-glare](http://www.illumina.co.uk/gridspot-anti-glare)

A flexible anti-glare range of distinct spotlights available in four lumen outputs and a choice of beam angles with a CRI of >80. Ideal for retail, leisure and display applications where glare could be an issue.



Vertical tilt 90°  
Horizontal rotation 355°

Gridspot Anti-Glare is designed so that the heat sink forms part of the aesthetic:



Small black (1400lm)



Large white (≥2400lm)



Crisp and clean optic



Can be aimed vertically



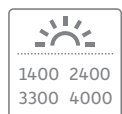
Clean aesthetic



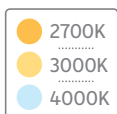
Exposed heat sink

## Options available:

### Lumen output



### Colour temp.



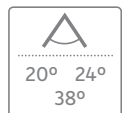
### Body colour



### Track mount



### Beam angles



### Body sizes



### Surface mount



### Vertical mount

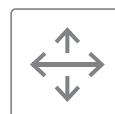


## Specification:

### LED chip / CRI



### Adjustable



### IP rating



### Anti-glare



### Dimming



# Gridspot Anti-Glare

Canterbury Cathedral / Canterbury, Kent, UK

Often described as 'England in stone', the cathedral's rich history is intrinsically linked to the nation's story and is one of the oldest and most famous Christian structures in England. A World Heritage site.

# Probeam Select



For further information, technical details and downloads scan the QR code or visit [www.illumina.co.uk/probeam-select](http://www.illumina.co.uk/probeam-select)

Our tuneable spotlight available in five Kelvin temperatures (CCT) combined with a variable beam and a CRI of >90 provides post-installation flexibility. This range is ideal for galleries and museums.

Selectable colour temperature:

- 3000K
- 3500K
- 4000K
- 5000K
- 6000K

Adjustable beam  
15 to 60°

Vertical tilt 90°  
Horizontal rotation 355°

**Probeam Select** is perfect for highlighting defined areas:

White body

With Honeycomb accessory



Distinctive optic



Can be aimed vertically



Simple to use controls



Selectable CCT & self-dim

## Options available:

<p>Lumen output</p> <p>2000</p>	<p>Colour temp.</p> <p>Selectable</p> <p>3000-6000K</p>	<p>Body colour</p> <div style="border: 1px solid black; padding: 2px; margin-bottom: 2px;">White</div> <div style="background-color: black; color: white; padding: 2px;">Black</div>	<p>Track mount</p>
<p>Beam angles</p> <p>15 to 60°</p>	<p>Body sizes</p> <p>1 size</p>	<p>Surface mount</p>	<p>Vertical mount</p>

## Specification:

<p>LED chip / CRI</p> <p>CREE</p> <p>CRI &gt;90</p>	<p>Adjustable</p>	<p>Anti-glare</p>	<p>Dimming</p> <p>Self dimmable</p>
<p>IP rating</p> <p>IP 20</p>	<p>Variable beam</p>	<p>Accessories</p> <p>Honeycomb</p>	



# Probeam Select

Cris Contini Contemporary / Mayfair, London, UK

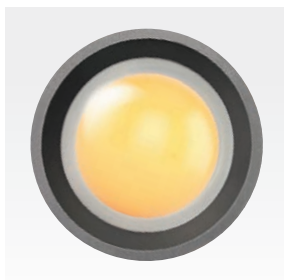
A modern and contemporary art gallery with global outreach, promoting world-renowned artists, located in the heart of London. It represents an unmissable point of reference for art lovers and collectors from around the world.

# Probeam Frame



For further information, technical details and downloads scan the QR code or visit [www.illumina.co.uk/probeam-frame](http://www.illumina.co.uk/probeam-frame)

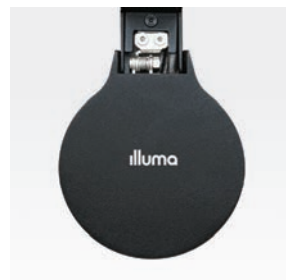
Our framing spotlight enables the projection of geometric shapes with clear edges. A great solution for lighting works of art and highlighting specific areas. Perfect for changeable environments looking to highlight details.



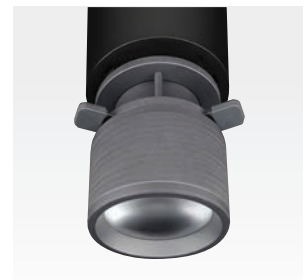
Adjustable optic



Can be aimed vertically



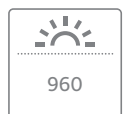
Clean aesthetic



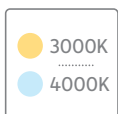
Four point frame adjust

## Options available:

### Lumen output



### Colour temp.



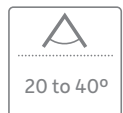
### Body colour



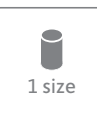
### Track mount



### Beam angles



### Body sizes



### Surface mount



### Vertical mount

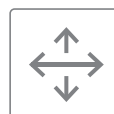


## Specification:

### LED chip / CRI



### Adjustable



### IP rating



### Variable beam



### Dimming



# TATE EDIT

Art + objects for your home, chosen by TATE  
All proceeds support TATE

## Probeam Frame

Tate Edit Shop / Tate Modern, Bankside, London, UK

Tate Edit in London, is a unique space offering a carefully curated range of products to spark curiosity and inspire creativity.

# Probeam



For further information, technical details and downloads scan the QR code or visit [www.illumina.co.uk/probeam](http://www.illumina.co.uk/probeam)

This variable beam spotlight has been developed specifically for ever-changing applications such as art galleries, museums, retail environments and display applications.



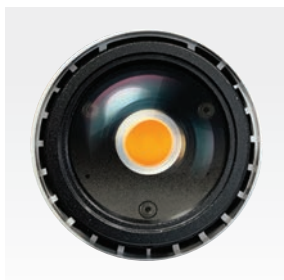
**Probeam** provides accurate and effective beam control:



Black body



Adjustable beam (15 to 90°)



Adjustable optic



Can be aimed vertically



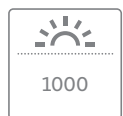
Clean aesthetic



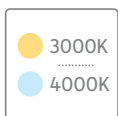
Self-dim version

## Options available:

### Lumen output



### Colour temp.



### Body colour



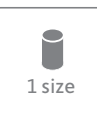
### Track mount



### Beam angles



### Body sizes



### Surface mount



### Vertical mount

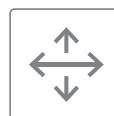


## Specification:

### LED chip / CRI



### Adjustable



### IP rating



### Variable beam



### Dimming options







# Probeam

Boo. / UK

Boo adds a modern twist on classic American burgers using only the finest fresh ingredients. Available multiple locations across the UK.

# Rotaspot



For further information, technical details and downloads scan the QR code or visit [www.illumina.co.uk/rotaspot](http://www.illumina.co.uk/rotaspot)

This contemporary award-winning spotlight has a 355° rotation both horizontally and vertically. An ideal solution for retail, leisure and commercial applications that require a bold lighting statement.



**Rotaspot** is a contemporary design in which the heat sink forms part of the aesthetic:



Black body



Integral heat sink



Philips LED chip



Award winning design



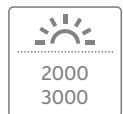
Unique circular profile



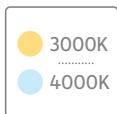
Back view of luminaire

## Options available:

### Lumen output



### Colour temp.



### Body colour



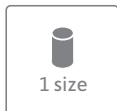
### Track mount



### Beam angles



### Body sizes



### Surface mount



### Vertical mount

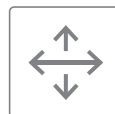


## Specification:

### LED chip / CRI



### Adjustable



### IP rating





# Rotaspot

## Other Criteria / London, UK

Founded by Damien Hirst, Other Criteria, London, collaborates with both established and emerging artists to make modern art approachable and attractive. With its technical performance alongside its aesthetic the white Rotaspot LED was deemed a perfect fit for the brand.

# Lumapar



For further information, technical details and downloads scan the QR code or visit [www.illumina.co.uk/lumapar](http://www.illumina.co.uk/lumapar)

This compact and stylish range of versatile spotlights is available in two lumen outputs and a choice of beam angles, including a tight 6°. Ideal for retail, display and domestic applications that require highlighting and general lighting.



**Lumapar** is a small compact spotlight, ideal for low ceilings:



Black body



Silver Grey body



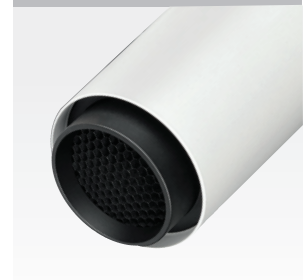
CREE LED chip



Can be aimed vertically



Rear heat sink as feature



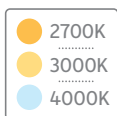
With honeycomb accessory

## Options available:

### Lumen output



### Colour temp.



### Body colour



### Track mount



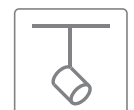
### Surface mount



### Vertical mount



### Pendant stem

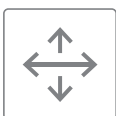


## Specification:

### LED chip / CRI



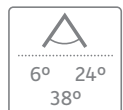
### Adjustable



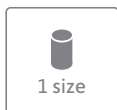
### Dimming



### Beam angles



### Body sizes



### IP rating



### Accessories





# Lumapar

## Monty's Bakehouse / Surrey, UK

Based in the beautiful Surrey countryside, it comprises a culinary development centre and offices, providing innovative and sustainably packaged food-to-go solutions for sporting venues, airports, universities and office canteens.

# Lumapar GU10



For further information, technical details and downloads scan the QR code or visit [www.illumina.co.uk/lumapar-gu10](http://www.illumina.co.uk/lumapar-gu10)

A timeless range of versatile spotlights for GU10 LED and mains lamps not requiring a transformer. Ideal for retail, display and domestic applications that require highlighting and general lighting.



**Lumapar GU10** is a small spotlight. Choose between two different cowl lengths:



Black standard cowl



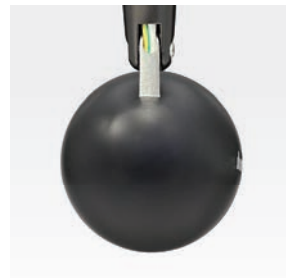
Silver Grey medium cowl



GU10 lamp not supplied



Can be aimed vertically



Bullet shaped rear



Polished chrome body

## Options available:

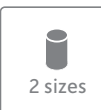
### Body colour



### Retrofit lamps



### Body sizes



### Track mount



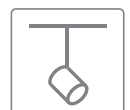
### Surface mount



### Vertical mount

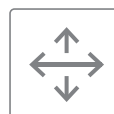


### Pendant stem



## Specification:

### Adjustable



### Anti-glare



### IP rating



### Accessories



Note: The long cowl is ONLY supplied as a stand-alone accessory.



# Lumapar GU10

Central Bikes / London, UK

One of London's favourite retail stores for two-wheeled commuters, providing a great range of carefully selected scooters and motorbikes. A showroom and service centre that believes in simplicity and economy.

# Rocket E27



For further information, technical details and downloads scan the QR code or visit [www.illumina.co.uk/rocket-e27](http://www.illumina.co.uk/rocket-e27)

A classic range of compact spotlights for mains operated, LED and PAR halogen lamps. Ideal for retail, display and domestic applications that require highlighting and general lighting.



Rocket E27 is ideal for retrofit lamps. Choose between three different cowl styles:



Black with standard cowl



White with standard cowl



E27 lamp not supplied



Can be aimed vertically



Shallow convex cone rear



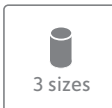
Extended cowl option

## Options available:

### Body colour



### Body sizes



### Retrofit lamps

**E27**

R60  
R63  
R80  
PAR20  
PAR30

### Track mount



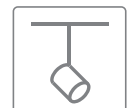
### Vertical mount



### Surface mount



### Pendant stem

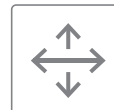


### Style options



## Specification:

### Adjustable



### IP rating







# Rocket E27

Cath Kidston / London, UK

Cath Kidston is a British international home furnishing retail company with headquarters in London, with a focus on handcraft and vintage themed items that embody a quintessentially British lifestyle.

E2

# Topspot E27



For further information, technical details and downloads scan the QR code or visit [www.illumina.co.uk/topspot-e27](http://www.illumina.co.uk/topspot-e27)

A versatile spotlight for LED, PAR halogen and mains reflector lamps. Ideal for retail, display and domestic applications that require general lighting or areas to be highlighted.



**Topspot E27** is ideal for LED retrofit lamps of different types:



Rubber gasket for use with PAR20 lamps



E27 lamp not supplied



Can be aimed vertically



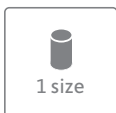
Vented back

## Options available:

### Body colour



### Body sizes



### Retrofit lamps

**E27**

R60  
R63  
R80  
PAR20  
PAR30  
PAR38

### Track mount



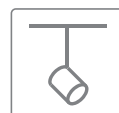
### Surface mount



### Vertical mount

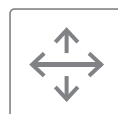


### Pendant stem



## Specification:

### Adjustable



### IP rating





# Topspot E27

Brandy Melville / Covent Garden, UK

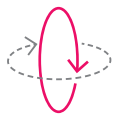
A contemporary clothing retailer representing classic Italian fashion elements, combined with vintage details. 'Made in Italy' stands for quality, where every detail is carefully examined.

# Marktrack 24V



For further information, technical details and downloads scan the QR code or visit [www.illumina.co.uk/marktrack-24v](http://www.illumina.co.uk/marktrack-24v)

A small and discreet 24V miniature LED spotlight and track system. This solution is ideal for retail, display and domestic applications requiring unobtrusive profiles with lower output bodies.



Vertical tilt 85°  
Horizontal rotation 355°

## Marktrack 24V

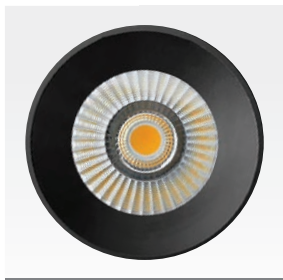
Two body sizes are available on this 24V miniature track system:



Black small body (550lm)



White large body (900lm)



CREE LED chip



Easy to fit and adjust



Clean and simple design



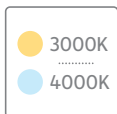
Surface driver option

## Options available:

### Lumen output



### Colour temp.



### Body colour



### Track mount



### Beam angles



### Body sizes



### Vertical mount

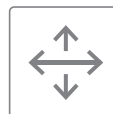


## Specification:

### LED chip / CRI



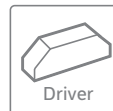
### Adjustable



### IP rating

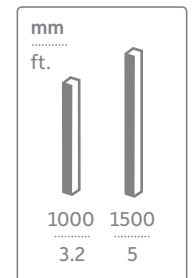


### Accessories



## Track:

### Marktrack lengths



Sussex

Psychology

Marktrack 24V

### The University of Brighton / Sussex, UK

A thriving, multi-campus University on the South Coast of England, its roots can be traced back to 1858. This modern site utilises our unobtrusive low-voltage system contributing to the critical importance of sustainability.

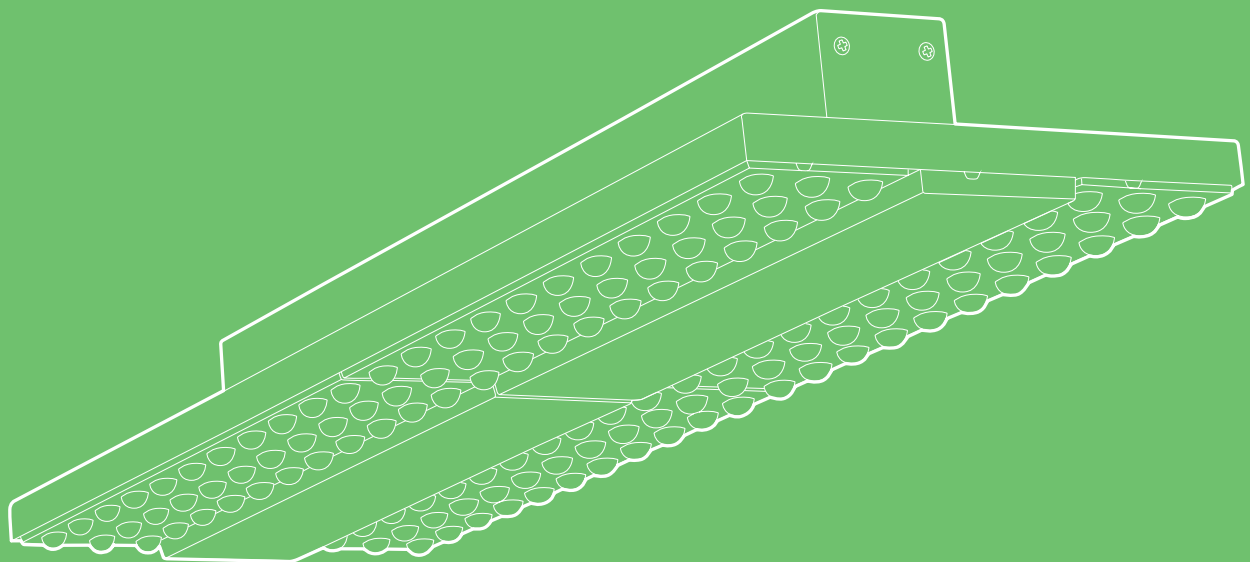
Marktrack 24V is an all-in-one compact track system that is easy to fit and adjust, ideal for display applications.



Discreet LED spotlight and track system with surface mounted driver - remote drivers are available

# Linear

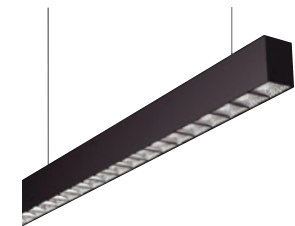
---



Linear lighting is ideal for uniform, open area lighting in multiple applications. Narrow and straight profiles are great for even vertical illumination or wallwashing.

# Linear product range

A versatile range of linear lighting solutions that can dramatically transform the aesthetics and possibilities of how a space is illuminated.



Linia Blade S 56



Linia Blade R 60



Linia Blade T 62



Floodline 64



Quadroled Linear 66



Quadroled 68



Revolva 70



Biline 72



Linia 74



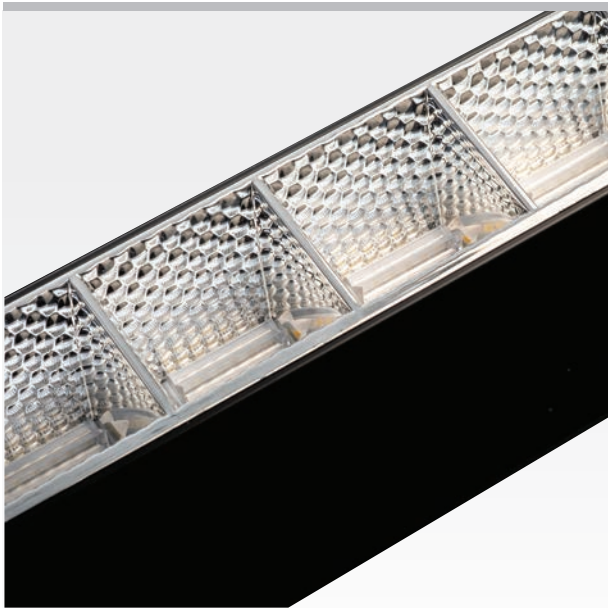
Linkline 76

Introducing

# Linia

# Blade S

**Multiple styles.** A sleek, suspended, surface or track mounted linear range that is available in a variety of options, including Continuous Row for our Suspended and Surface Mounted versions.



illumina /  
products /  
**Linia Blade S**

Indirect diffuser



Wallwash optic

## Accessories

For **Suspended** and **Surface** versions:



Straight Connector



90° Connector



Pendant kit



End caps



T Connector



X Connector



Wire suspension



Blanking module



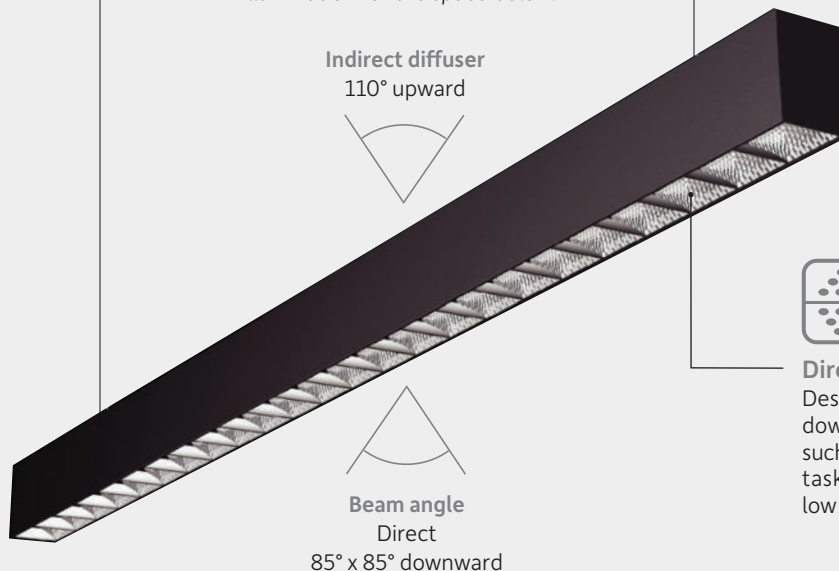
## Bi-directional

- Suspended /
- Direct
  - Wallwash
  - Opal Flood

Output 70% down / 30% up ratio

✓

The **uplight (indirect) component** provides a reflected, low glare distribution, whilst the downward component, available as either a Direct, Wallwash or Opal Flood optic, provides a general or direct level of illumination for the space below.



## Direct

- Suspended
- Surface mounted
- Track mounted

## Wallwash

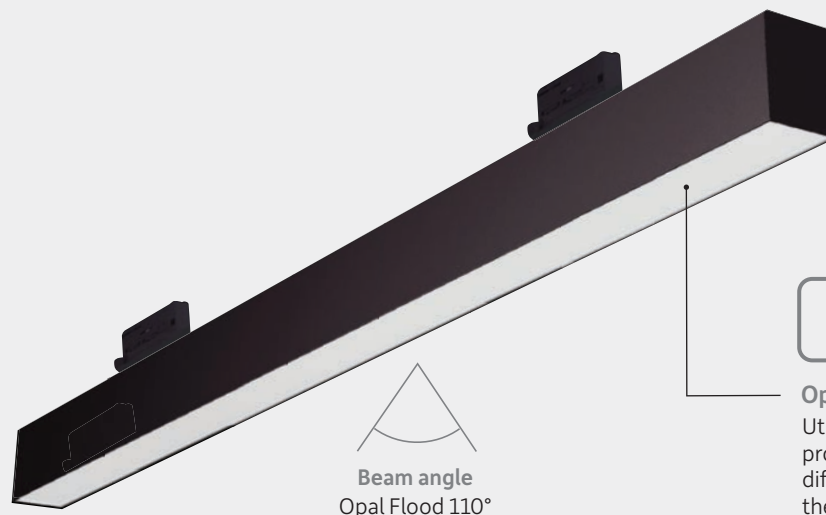
- Suspended
- Surface mounted
- Track mounted

When **track mounted**, the asymmetric outputs of the Wallwash versions are fixed to a **right** or **left** orientation.



## Opal Flood

- Suspended
- Surface mounted
- Track mounted



# Linia Blade S *continued*



For further information, technical details and downloads scan the QR code or visit [www.illumina.co.uk/linia-blade-s](http://www.illumina.co.uk/linia-blade-s)

A sleek, versatile and contemporary linear range in a variety of suspended, track or surface mounted options. Ideal for applications requiring general or wallwash lighting. Suspended and surface variants can connect as continuous runs.

**Polar curves**

Direct    Wallwash    Opal

When track mounted, the asymmetric outputs of the Wallwash versions are fixed to a right or left orientation

**Bi-directional version**  
110° upward

**Bi-directional version**  
30% up / 70% down ratio

**Beam angle**  
Direct 85° x 85°  
Wallwash 55° x 90°  
Opal Flood 110°

**Linia Blade S** comes in two lengths, each with two output options:

White Direct option

Black Wallwash option

Black Opal Flood option

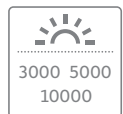
Glare reducing lenses

Joining connectors

Slim end profile (65mm x 47mm)

## Options available:

### Lumen output



### Colour temp.



### Body colour



### Suspended



### Surface mount



### Style options



## Specification:

### LED chip / CRI



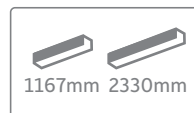
### Dimming options



### Beam angles



### Body sizes



### Track mount



### Emergency



### Accessories



# Linia Blade S

## The Museum of Making / Derby, UK

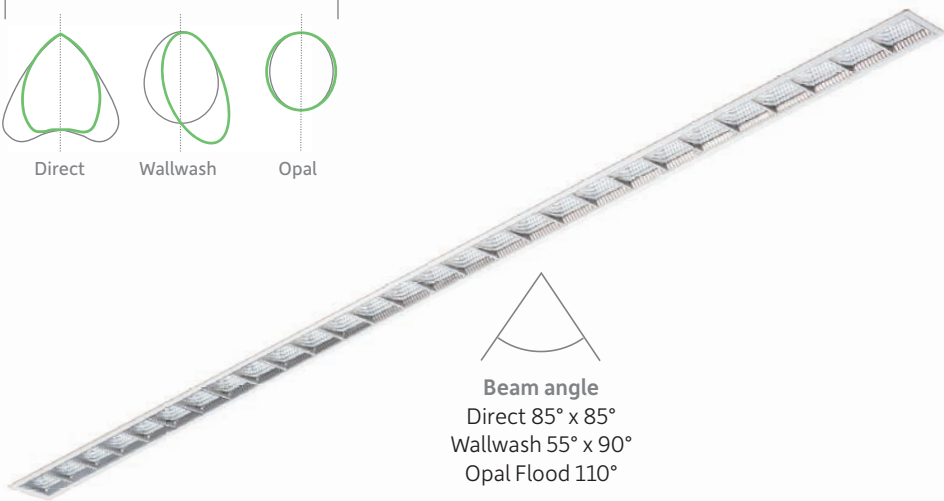
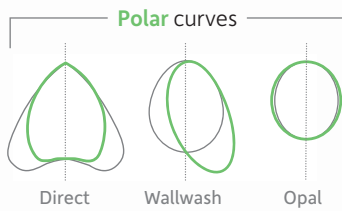
A contemporary space, telling Derby's 300-year-old history of making and inspiring new creativity. Featuring two beautiful areas for retail, the shop floor and hub - a dedicated space for makers.

# Linia Blade R



For further information, technical details and downloads scan the **QR code** or visit [www.illumina.co.uk/linia-blade-r](http://www.illumina.co.uk/linia-blade-r)

A sleek, recessed, linear range in three options with a choice of beam angles and lumen outputs. Ideal for applications that require discreet lighting as well as a direct light source to illuminate key features.



**Beam angle**  
 Direct 85° x 85°  
 Wallwash 55° x 90°  
 Opal Flood 110°

**Linia Blade R** comes in two lengths, each with three styles:



Wallwash option



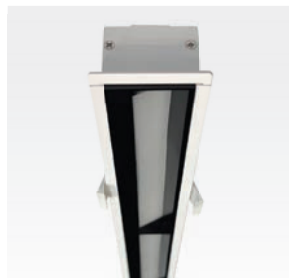
Opal Flood option



Strong fixing clips



Direct profile



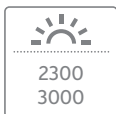
Wallwash profile



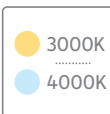
Opal Flood profile

## Options available:

### Lumen output



### Colour temp.



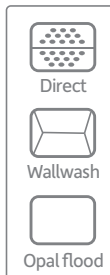
### Body colour



### Emergency

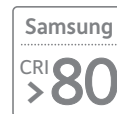


### Style options



## Specification:

### LED chip / CRI



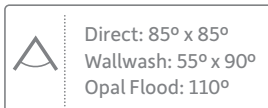
### Wide beam



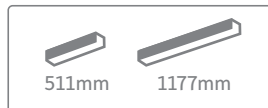
### Dimming options



### Beam angles



### Body sizes



### Cut-out





# Linia Blade R

Marks & Spencer / London, UK

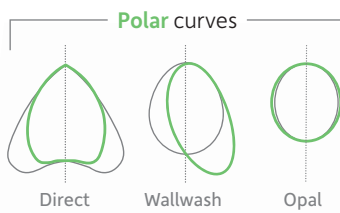
A major British multinational retailer with headquarters in Paddington, London, specialising in quality clothing, home, beauty and food products.

# Linia Blade T

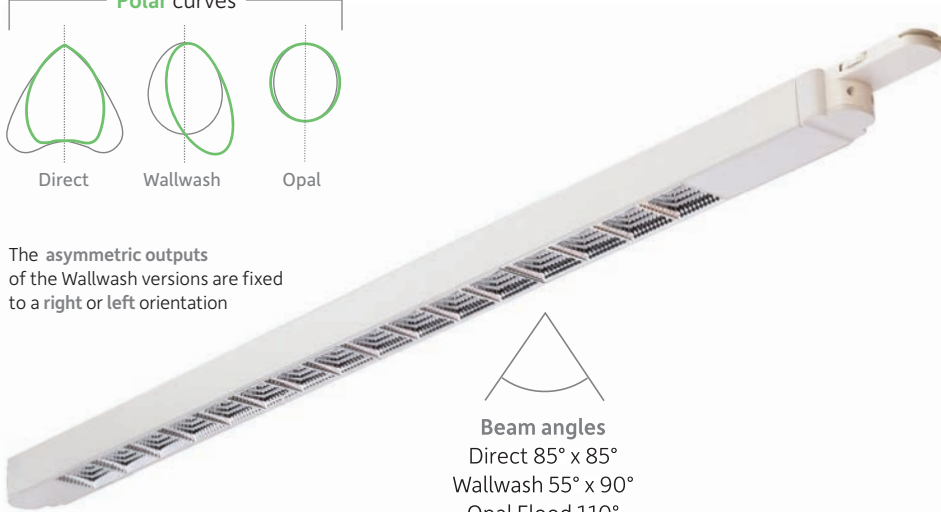


For further information, technical details and downloads scan the **QR code** or visit [www.illumina.co.uk/linia-blade-t](http://www.illumina.co.uk/linia-blade-t)

A slimline, track mounted, linear range with a choice of three optics and two lumen outputs. Ideal for applications that require wall washing and general lighting.



The asymmetric outputs of the Wallwash versions are fixed to a right or left orientation



**Beam angles**  
 Direct 85° x 85°  
 Wallwash 55° x 90°  
 Opal Flood 110°

**Linia Blade T** comes in two colours and three options:



Black Direct option



White Wallwash option



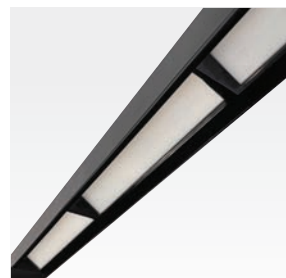
White Opal Flood option



Direct profile



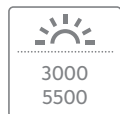
3-Circuit track adaptor



Wallwash profile

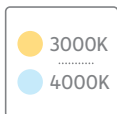
## Options available:

### Lumen output



3000  
5500

### Colour temp.



3000K  
4000K

### Body colour



White  
Black

### Track mount



### Style options



Direct  
Wallwash  
Opal flood

## Specification:

### LED chip / CRI

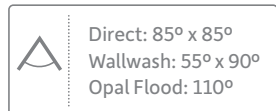


Samsung  
CRI > 80

### Wide beam

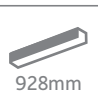


### Beam angles



Direct: 85° x 85°  
Wallwash: 55° x 90°  
Opal Flood: 110°

### Body size



928mm

### IP rating



IP  
20



# Linia Blade T

## Process Gallery / Kent, UK

A working studio and sculpture garden, situated near Lenham, Kent contains the uniquely designed and landmark concrete chamber where owner and artist Nick Veasey creates his X-ray art.

# Floodline



For further information, technical details and downloads scan the **QR code** or visit [www.illumina.co.uk/floodline](http://www.illumina.co.uk/floodline)

This unique wall washer has been specifically developed with a compact profile, high lumen output, and a rectangular spread. It is ideal for providing even illumination of vertical surfaces and displays.



Quality stainless steel louvre for reduced glare & beam control



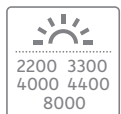
Curved profile



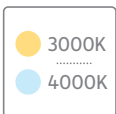
Stainless steel louvre

## Options available:

### Lumen output



### Colour temp.



### Body colour



### Track mount



### Surface mount



### Beam angle



### Body sizes



### Vertical mount



## Specification:

### LED chip / CRI



### Wide beam



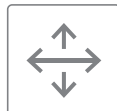
### Anti-glare



### IP rating



### Adjustable



### Dimming







# Floodline

## Sheppy's Cider / Somerset, UK

A stunning example of restaurant and retail lighting at its best. Sheppy's are one of the oldest premium craft cider making families in the world with a history that goes back more than 200 years.

# Quadroled Linear



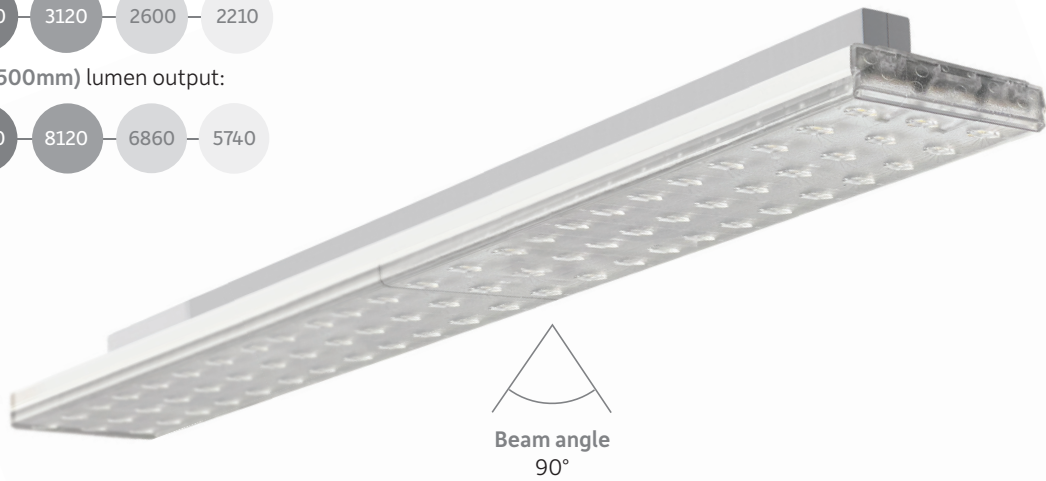
For further information, technical details and downloads scan the **QR code** or visit [www.illumina.co.uk/quadroled-linear](http://www.illumina.co.uk/quadroled-linear)

A new statement piece providing a modern look. Ideal for the illumination of large areas that demand an efficient, powerful lighting system and allows configuration up to 9,300 lumens. An innovative optical lens system delivers an even distribution of light.

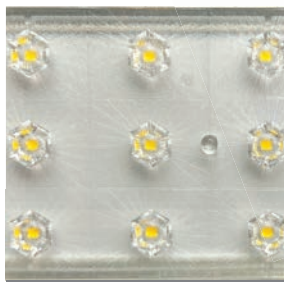
Selectable (600mm) lumen output:



Selectable (1500mm) lumen output:



Beam angle  
90°



Optical lens system



Mounts into 3-Circuit track



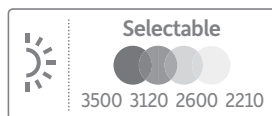
Black option



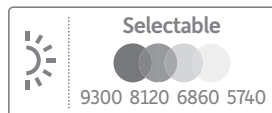
Four selectable lumen outputs

## Options available:

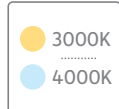
Lumen output (600mm)



Lumen output (1500mm)



Colour temp.



Body colour



Track mount



## Specification:

LED chip / CRI



Wide beam



Dimming



IP rating



Selectable output





FINE FOOD

HOME

# Quadroled Linear

Alver Valley Garden Centre / Gosport, UK

Alver Valley Country Park and Garden Centre offers a great visitor experience for nature lovers, including a large coffee shop with panoramic views over the plant display areas and country park beyond.

# Quadroled



For further information, technical details and downloads scan the QR code or visit [www.illumina.co.uk/quadroled](http://www.illumina.co.uk/quadroled)

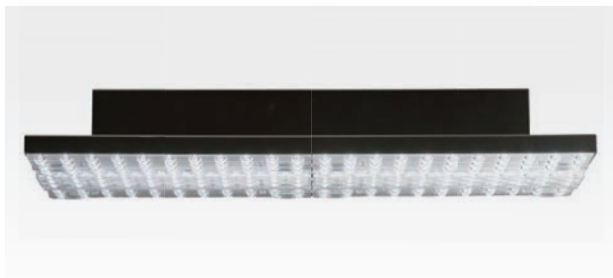
Ideal for the illumination of large areas that demand an efficient, powerful lighting system that can be configured up to 11,500 lumens. An innovative optical lens system permits different beam angles onto a surface for a wide and even distribution of light.

Selectable lumen output:



Beam angles

Central component provides 2 x 90° for downward light  
Outer component provides 4 x 25° for lighting the verticals



Low linear profile



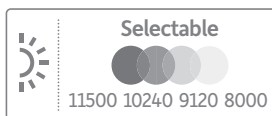
Optical lens system



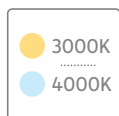
Four selectable lumen outputs

Options available:

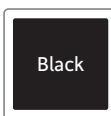
Lumen output



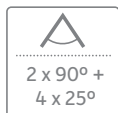
Colour temp.



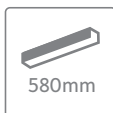
Body colour



Beam angles



Body size



Track mount



Specification:

LED chip / CRI



Wide beam



IP rating



Selectable output



# Quadroled

Polmar Foods Supermarket / London, UK

Their bright and spacious, modern new store in Wembley offers a wide variety of products from Eastern Europe.

# Revolva



For further information, technical details and downloads scan the **QR code** or visit [www.illumina.co.uk/revolva](http://www.illumina.co.uk/revolva)

An adjustable linear with a wide beam angle and high lumen output of 8,800 lumens. This range can be suspended as an accent light for extra drama and character, or track mounted. Diffusers rotate 150° for direct and indirect lighting effects.



3-Circuit track mount version



Curved aluminium profile



Rotated diffusers (down)



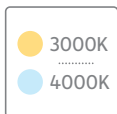
Rotated diffusers (up)

## Options available:

### Lumen output



### Colour temp.



### Body colour



### Track mount



### Beam angle



### Body size



### Suspended



## Specification:

### LED chip / CRI



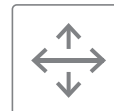
### Wide beam



### IP rating



### Adjustable



### Dimming



### Accessories





# Revolva

## Smart Office / Bankside, London, UK

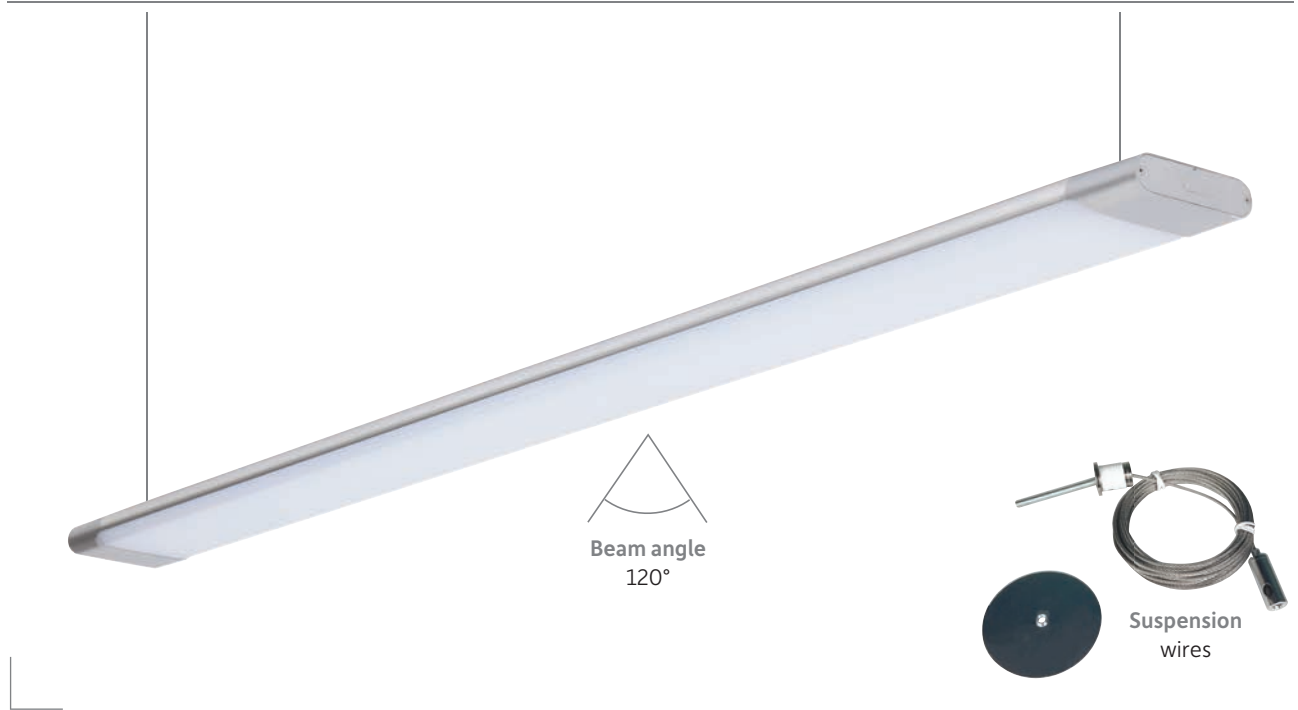
A major new office complex development on Southwark Street. A creative and cultural neighbourhood set within one of the oldest areas of London.

# Biline



For further information, technical details and downloads scan the **QR code** or visit [www.illumina.co.uk/biline](http://www.illumina.co.uk/biline)

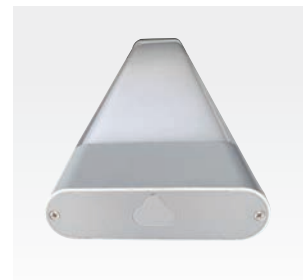
A slim, surface mounted, or suspended linear solution which can connect to make continuous runs. Ideal for contemporary lighting applications that require general lighting and a direct light source.



Up to five can be joined in a continuous row (A+B+B+B+B)



Power connector



Biline end cap

## Options available:

<b>Lumen output</b>  3500	<b>Colour temp.</b>  3000K 4000K	<b>Body colour</b>  Silver Grey	<b>Surface mount</b> 
<b>Beam angle</b>  120°	<b>Body size</b>  1200mm	<b>Suspended</b> 	

## Specification:

<b>LED chip / CRI</b>  <b>&gt;80</b>	<b>Wide beam</b> 	<b>Accessories</b>  Suspension wires
<b>IP rating</b> <b>IP 20</b>	<b>Joinable</b> 	





# Biline

Sophia Contemporary Gallery / London, UK

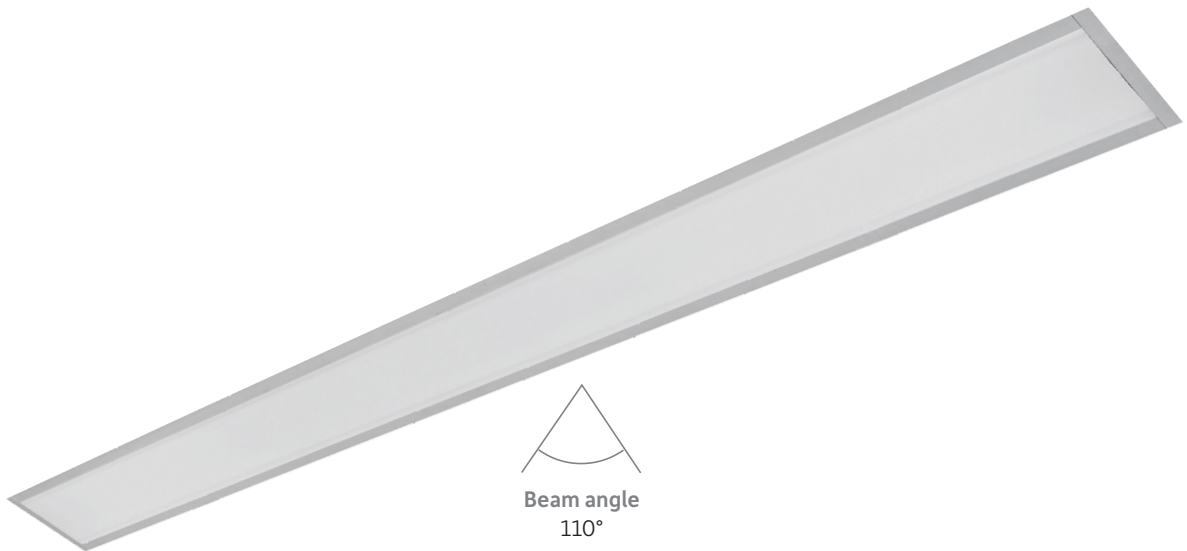
A contemporary Gallery based in Mayfair which showcases and promotes unique art by emerging and established artists.

# Linia



For further information, technical details and downloads scan the **QR code** or visit [www.illumina.co.uk/linia](http://www.illumina.co.uk/linia)

An unobtrusive recessed, linear solution with a wide beam angle and high output of 8,800 lumens. This range is ideal for applications that require discreet lighting as well as a direct light source to illuminate key features.



Robust aluminium body



Recessed profile



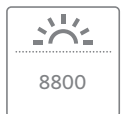
Minimal aluminium frame



Strong fixing clips

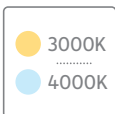
## Options available:

### Lumen output



8800

### Colour temp.



3000K  
4000K

### Body colour



Aluminium

### Beam angle



110°

### Body size



1200mm

## Specification:

### LED chip / CRI



Vossloh  
CRI >80

### IP rating



IP  
20

### Wide beam



### Recessed



### Cut-out



1190x85  
mm

### Dimming



DALI 2



# Linia

Palamon Court / Canterbury, UK

Bespoke accommodation offering a range of studio and en-suite student rooms located in the heart of the city.

# Linkline



For further information, technical details and downloads scan the **QR code** or visit [www.illumina.co.uk/linkline](http://www.illumina.co.uk/linkline)

A linkable system which connects to make continuous runs. Can be installed in straight runs or curves. Ideal for feature cove and under cabinet lighting in multiple interiors.

**Easy plug+play system**

Each individual unit is independently switchable



Flexible connection cable (150mm) available



Each fitting can be connected to the next to form a continuous row

## Options available:

<b>Lumen output</b>  300 720 1050 1550 1800	<b>Colour temp.</b>  3000K 4000K	<b>Body colour</b>  White	<b>Surface mount</b> 
<b>Beam angle</b>  120°	<b>Body sizes</b>  5 sizes	<b>Vertical mount</b> 	

## Specification:

<b>LED chip / CRI</b> Epistar CRI >80	<b>Wide beam</b> 	<b>Body size / Lumen options</b> <table border="1"> <tr> <th>Length (mm)</th> <th>Lumens</th> </tr> <tr> <td>289</td> <td>300</td> </tr> <tr> <td>550</td> <td>720</td> </tr> <tr> <td>850</td> <td>1050</td> </tr> <tr> <td>1150</td> <td>1550</td> </tr> <tr> <td>1450</td> <td>1800</td> </tr> </table>	Length (mm)	Lumens	289	300	550	720	850	1050	1150	1550	1450	1800
Length (mm)	Lumens													
289	300													
550	720													
850	1050													
1150	1550													
1450	1800													
<b>IP rating</b> IP 20	<b>Joinable</b> 													



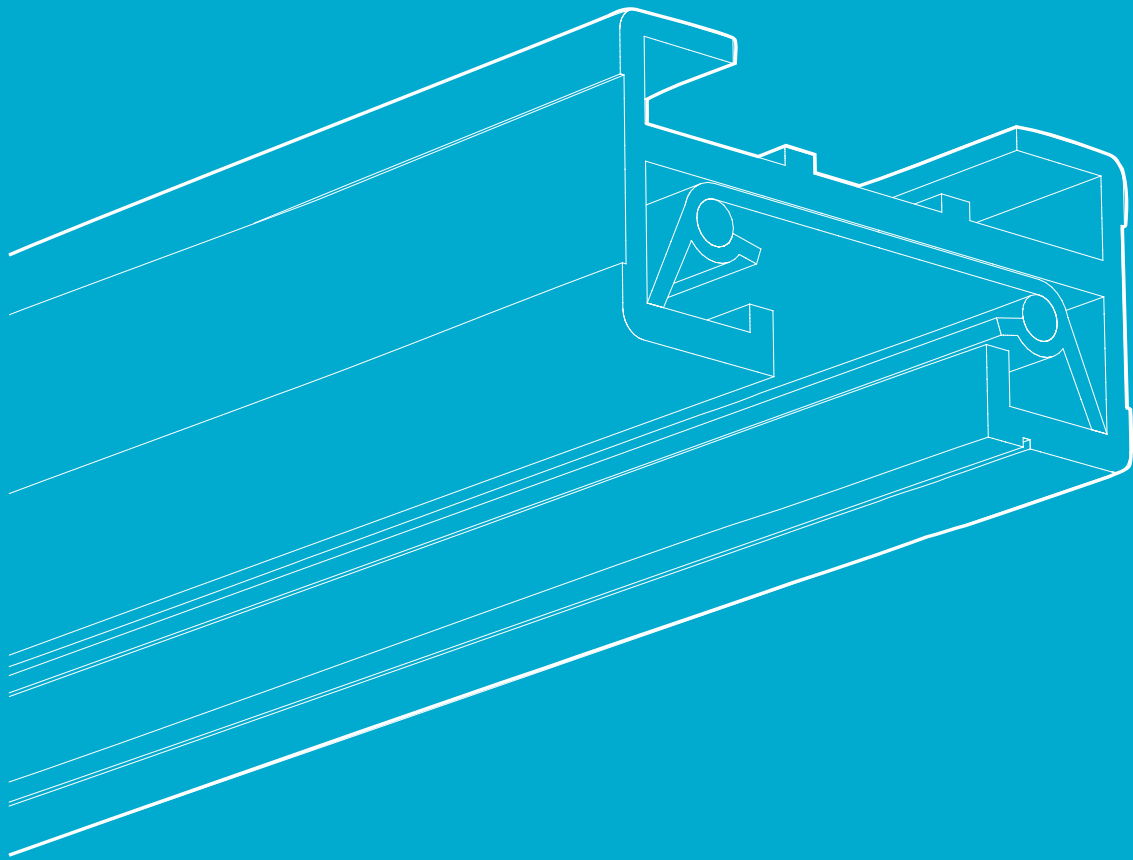
# Linkline

## David Mellor / Marylebone, UK

Located just off Marylebone High Street, their biggest shop to date showcases the full David Mellor collection of tableware and kitchenware, with a special emphasis on domestic British craft products.

# Track systems

---



Track systems are the most versatile lighting tool for galleries, exhibitions, retail and other display applications. Allowing luminaires to be positioned precisely where required.

# Track systems product range

A comprehensive range of mains track systems that provide an easy to install, future proof and flexible solution to any interior environment.



1-Circuit Track 230V **82**



3-Circuit Track 230V **84**



3-Circuit Track 230V Recessed **84**



Control Track 230V **86**



Control Track 230V Recessed **86**

# Introducing Track

## Multiple styles.

A comprehensive range of mains track systems providing versatility for all applications.

### Flexible

Track is easy to cut and join.

### Future proof

Luminaires can be added or removed easily.

### Quick to install

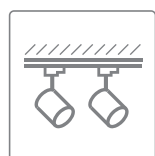
With just one **power feed** and a variety of connectors available, track can be quickly installed.



illuma /  
products /  
track systems



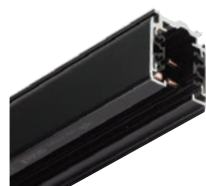
## Installation options:



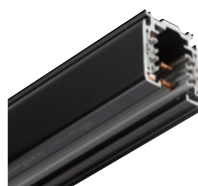
### Surface



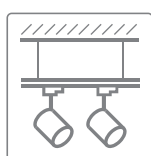
1-Circuit



3-Circuit



Control Track



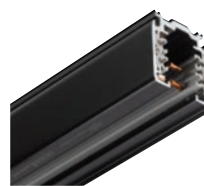
### Suspended



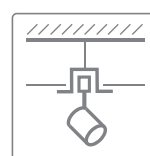
1-Circuit



3-Circuit



Control Track



### Recessed

**Note:** Recessed Track needs to be fixed to a solid surface with the suspended ceiling built around it.



3-Circuit Recessed



Control Track Recessed



## Track types:

### 1-Circuit Track

1-Circuit track system / powers all luminaires attached to the track on one circuit only. The power to the track can be controlled by a switch or a dimming module.

illumina /  
track /  
1-circuit



### 3-Circuit Track

3-Circuit track system / is a type of lighting track that has three separate circuits, each of which can be independently controlled to provide power and control to different groups of luminaires. The power to each circuit can be controlled by a switch or a dimming module.

illumina /  
track /  
3-circuit



### Recessed Track

Recessed track system / has the same benefits as the 3-Circuit Track but is recessed into the ceiling which provides a clean, unobtrusive look. Ideal when a minimalistic architectural aesthetic is required.

illumina /  
track /  
recessed



### Control Track

Control track system / contains a pair of control wires to pass the digital signal to DALI dimmable luminaires. Control Track can be surface mounted and suspended. It is also available as recessed.

illumina /  
track /  
control

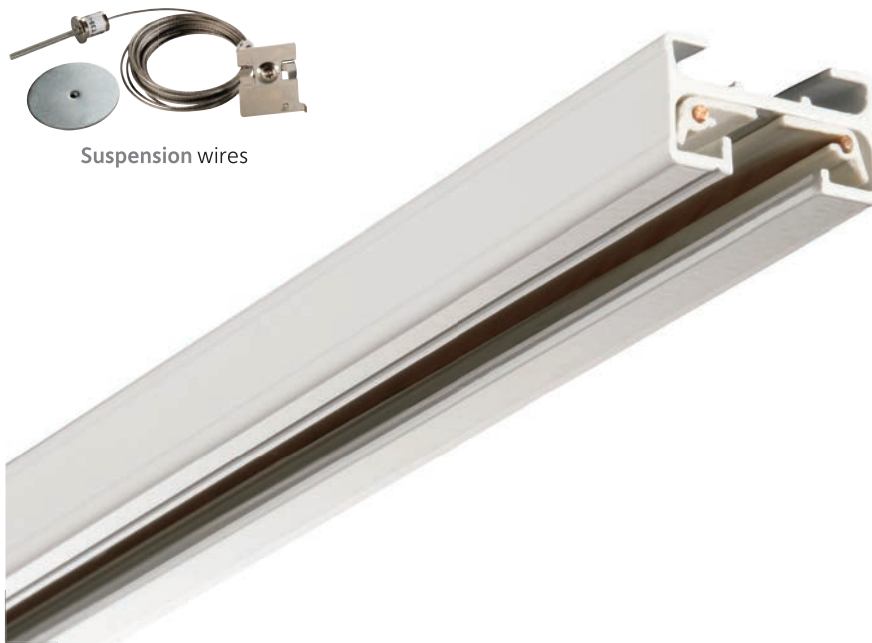


# 1-Circuit Track 230V



For further information, technical details and downloads scan the QR code or visit [www.illumina.co.uk/1-circuit-track-230v](http://www.illumina.co.uk/1-circuit-track-230v)

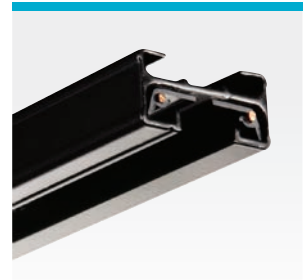
16A Mains voltage track, connector and accessory system. Ideal for applications where spotlights may need to be frequently added or removed.



Suspension wires

## 1-Circuit Track 230V

comes in a variety of colours and lengths:



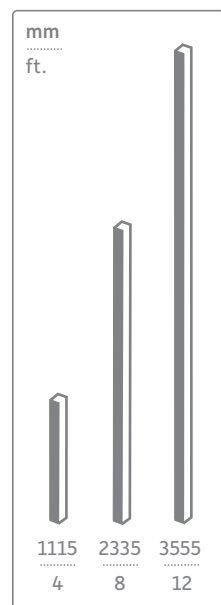
Black finish



Silver Grey finish

## Options available:

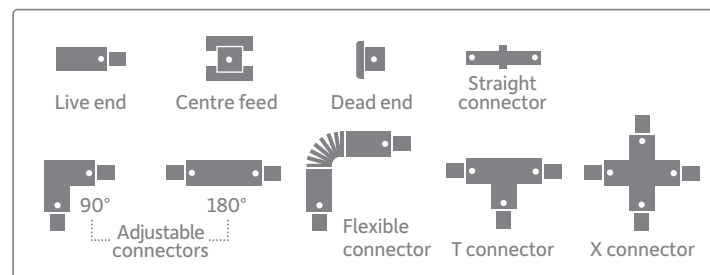
### Track sizes



### Body colour



### Track connectors



## Specification:

### 1-Circuit

230V  
**16A**

### IP rating

IP  
**20**

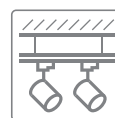
### Surface mount



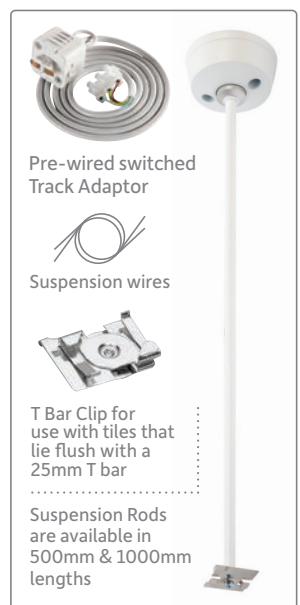
### Joinable



### Suspended



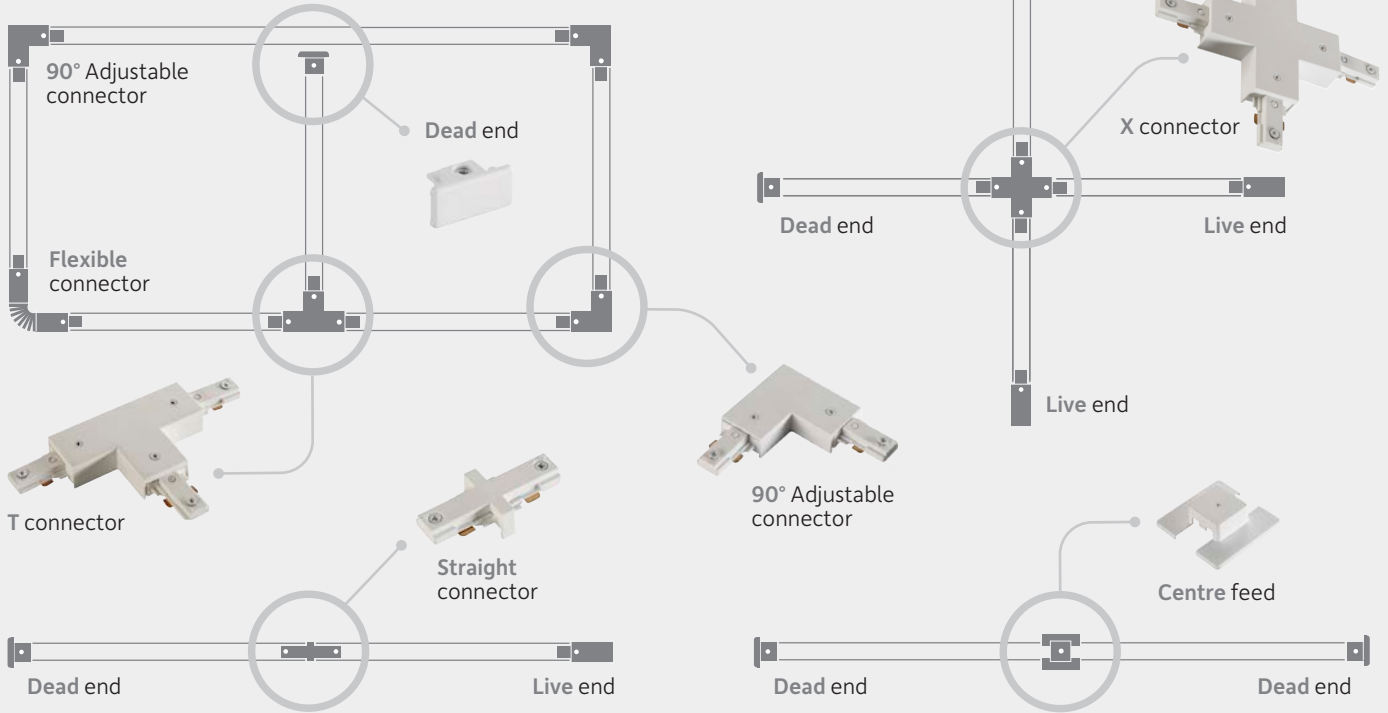
## Accessories



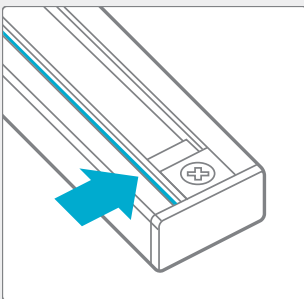
## 1-Circuit Track system

### Planning a layout

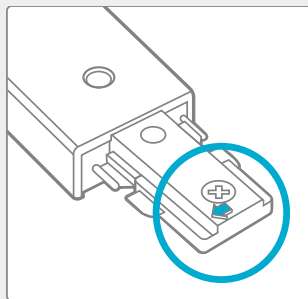
Track layouts can be designed to provide a solution for most environments. If you require any help in working out your layout, please contact us.



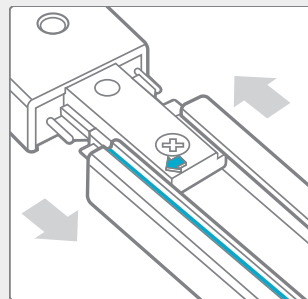
### Track polarity (1-Circuit)



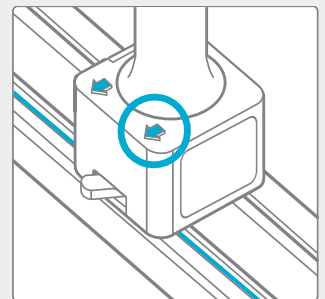
A **groove** runs along the edge of the track to show the LIVE.



Every adaptor and accessory has an **arrow** moulded on it.



The **arrow** must point at the **groove** when joining track



**Track Adaptor** must also point to the LIVE groove.



illumina /  
how to /  
**cut track**



illumina /  
how to /  
**attach luminaire**



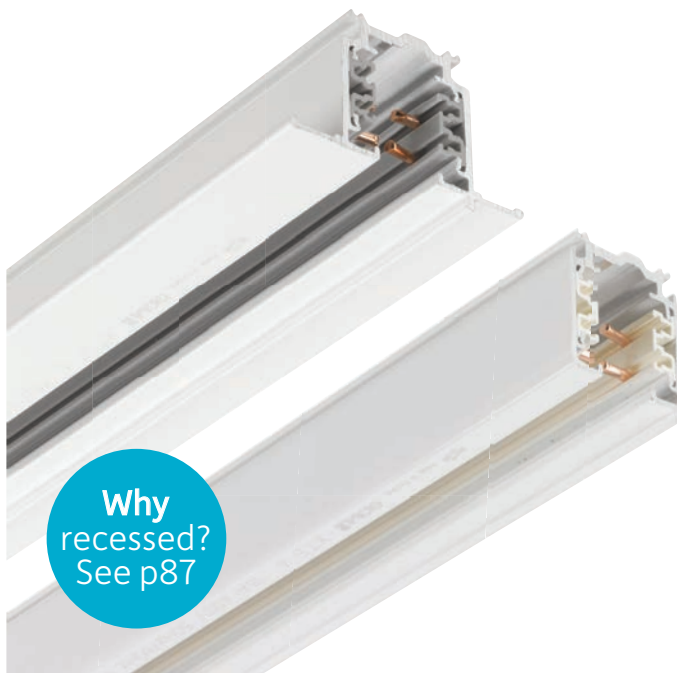
illumina /  
how to use /  
**suspension wire**

# 3-Circuit Track 230V



For further information, technical details and downloads scan the QR code or visit [www.illumina.co.uk/3-circuit-track-230v](http://www.illumina.co.uk/3-circuit-track-230v)

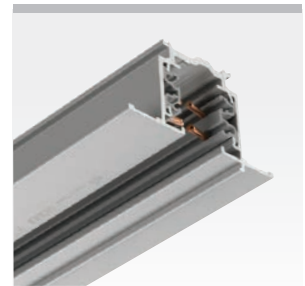
16A Mains voltage track system. Enabling up to three lighting configurations to be set up on one track - controlled and switched individually.



**3-Circuit Track 230V** comes in a variety of colours and lengths:



Black finish



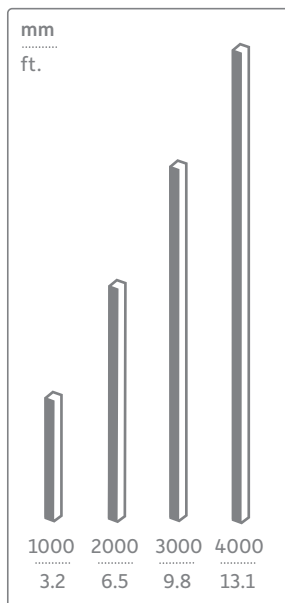
Silver Grey finish (recessed)



Bending tool

## Options available:

### Track sizes



### Body colour



## Specification:

### 3-Circuit

230V  
**16A**

### IP rating

IP  
**20**

### Surface mount



### Joinable



### Suspended



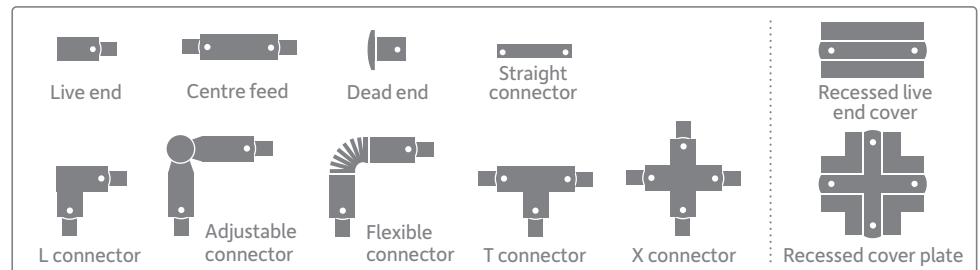
### Recessed



### Accessories



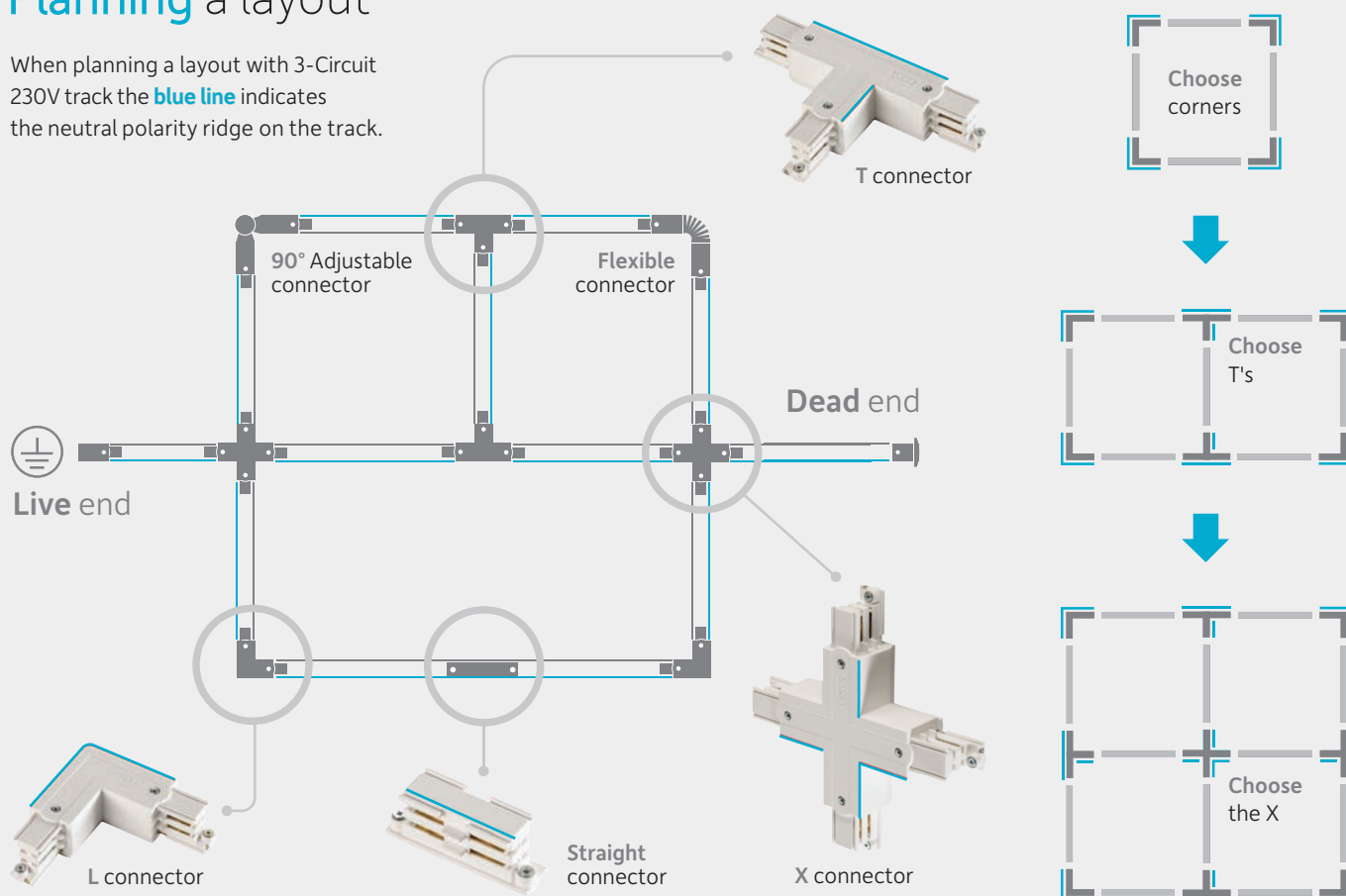
### Track connectors



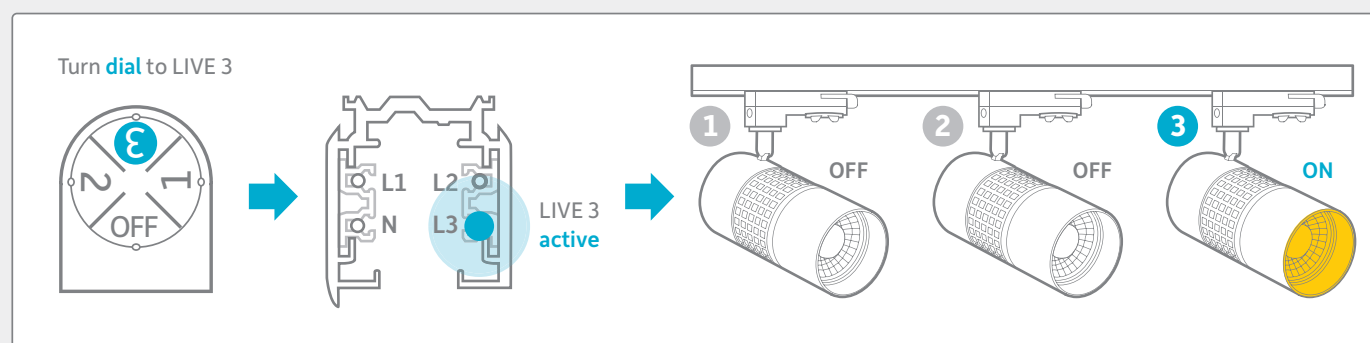
## 3-Circuit Track system

### Planning a layout

When planning a layout with 3-Circuit 230V track the **blue line** indicates the neutral polarity ridge on the track.



### How the system works (3-Circuit)



illumina /  
how to /  
**cut track**



illumina /  
how to /  
**attach luminaire**



illumina /  
how to use /  
**suspension wire**

# Control Track 230V



For further information, technical details and downloads scan the QR code or visit [www.illumina.co.uk/control-track-230v](http://www.illumina.co.uk/control-track-230v)

16A Mains voltage track system that has all the benefits of 3-Circuit track but with the additional ability to communicate the digital signal for DALI enabled luminaires.



**Control Track 230V** comes in a variety of colours and lengths:



Black finish



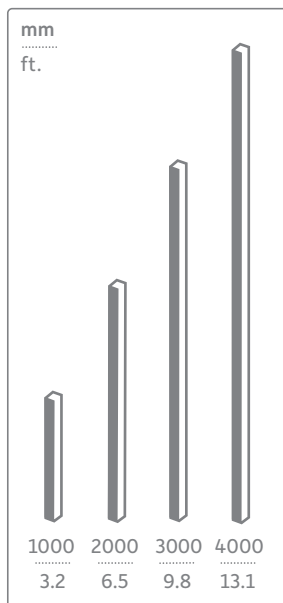
Silver Grey finish (recessed)



Bending tool

## Options available:

### Track sizes



### Body colour



## Specification:

### 3-Circuit

230V  
**16A**

### IP rating

IP  
**20**

### Surface mount



### Joinable



### Suspended



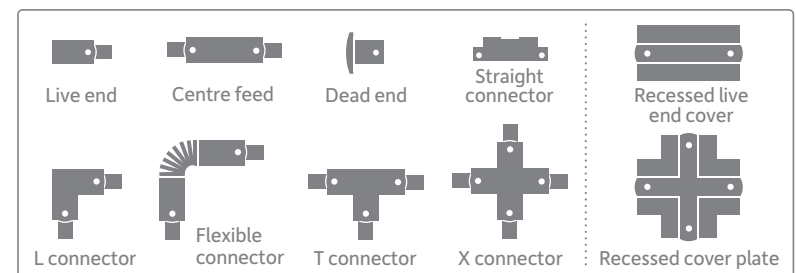
### Recessed



### Accessories



### Track connectors



## Why recessed?

Provides a sleek and modern lighting solution for interior spaces /

Ideal for galleries, museums or any modern interior. Installed into a ceiling or wall, they provide a clean and streamlined look. Available in 3-Circuit and Control Track versions, recessed tracks are a popular choice for those looking for a modern and functional lighting solution that is both versatile and efficient. Please be aware that recessed track needs to be hung from a solid surface with the suspended ceiling built around it.



## Why suspended?

Suspended tracks are used to provide a versatile and flexible lighting solution /

Suspension wires are installed onto the ceiling and the track is hung to the desired level within the space. Suspending track is a great option for spaces with high ceilings, as they allow for lighting to be brought closer to the task area, creating a more intimate and comfortable atmosphere. Our 1-Circuit, 3-Circuit and Control Tracks can be suspended.

## What is DALI?

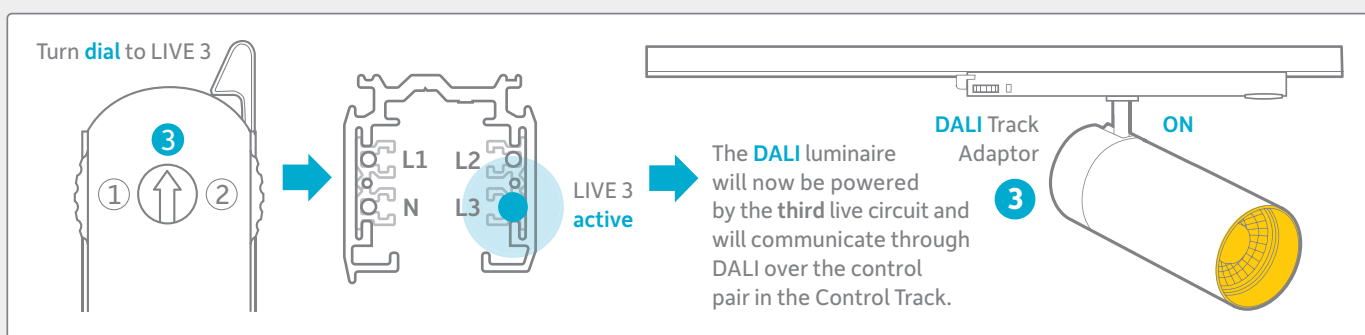
Control Track has a pair of control wires within the track which facilitates the communication of a digital signal to individual DALI (Digital Addressable Lighting Interface) compatible luminaires /



It can be useful in a variety of settings, from retail stores to art galleries through the creation of different lighting scenes and the ability to adjust lighting levels in response to changes in ambient lighting conditions.

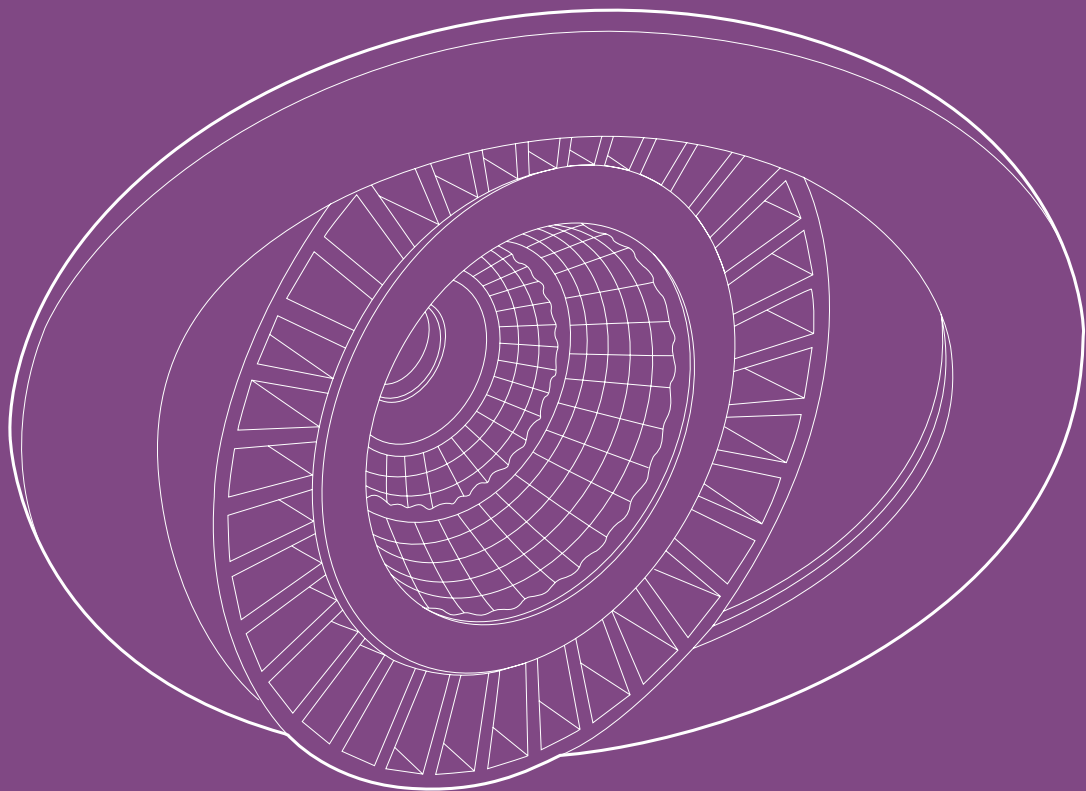
Control Track is designed to be flexible and scalable, so it can be used in a wide range of settings, from small installations to large-scale projects. It also supports the integration of other lighting control systems such as emergency lighting to provide a comprehensive solution.

## How the system works (Control Track)



# Project downlights

---



Project downlights are popular for various settings like retail, leisure, cafes, and residential properties. They are versatile and cost-effective, enhancing any space's ambience, creating a warm or bright environment.



# Project downlights product range

An extensive range of highly innovative project downlights, suitable for multiple environments.



Twizzle 90



Project 90 Open 92



Project 90 Cone 94



Project 90 Gimbal 96



Project 90 Wallwash 98



Framelight Mini 100



Proseal F 102



Project 50 104

# Twizzle



For further information, technical details and downloads scan the QR code or visit [www.illumina.co.uk/twizzle](http://www.illumina.co.uk/twizzle)

This modern downlight range has a fully adjustable body that rotates 355° and pivots ±90°. Specifically for environments that require a flexible downlighting solution, such as: retail, car showrooms, hotels and display applications.



Head rotates 355° /  
Pivots ±90°

**Twizzle**, a unique design with surprising tilt feature and shallow profile:



Black body



As a recessed uplighter



Crisp and clean optic



Integral heat sink



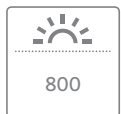
Head in flush position



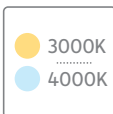
Head positioned at 90°

## Options available:

### Lumen output



### Colour temp.



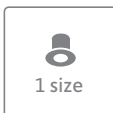
### Bezel colour



### Beam angles



### Bezel sizes



## Specification:

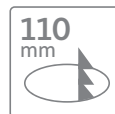
### LED chip / CRI



### Recessed



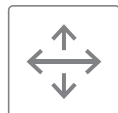
### Cut-out Ø



### IP rating



### Adjustable



### Driver



### Dimming options



# Twizzle

## Sheppy's Cider / Somerset, UK

With a cider-making legacy that dates back over two centuries, Sheppy's is a family-run enterprise. Their Taunton location showcases a remarkable application of lighting that serves as a prime example of exceptional restaurant and retail lighting.

# Project 90 Open



For further information, technical details and downloads scan the **QR code** or visit [www.illumina.co.uk/project-90-open](http://www.illumina.co.uk/project-90-open)

A classic downlight available in a choice of beam angles and lumen outputs, for multiple interior applications and general lighting. Dimmable and emergency versions available.



**Project 90 Open** is available in three LED colours, including 2700K Extra Warm White:



Black bezel



Easy twist & lock connector between downlighter & driver



Robust fixing clips



IP44 - Bathroom zones 2 & 3



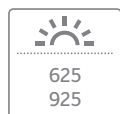
925lm LED light engine



625lm LED light engine

## Options available:

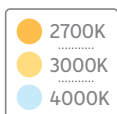
### Lumen output



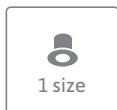
### Beam angles



### Colour temp.



### Bezel sizes



### Bezel colour



### Emergency



## Specification:

### LED chip / CRI



### IP rating



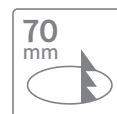
### Recessed



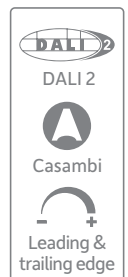
### Driver



### Cut-out Ø



### Dimming options





# Project 90 Open

Crown Diamond Jewellers / Brighton, UK

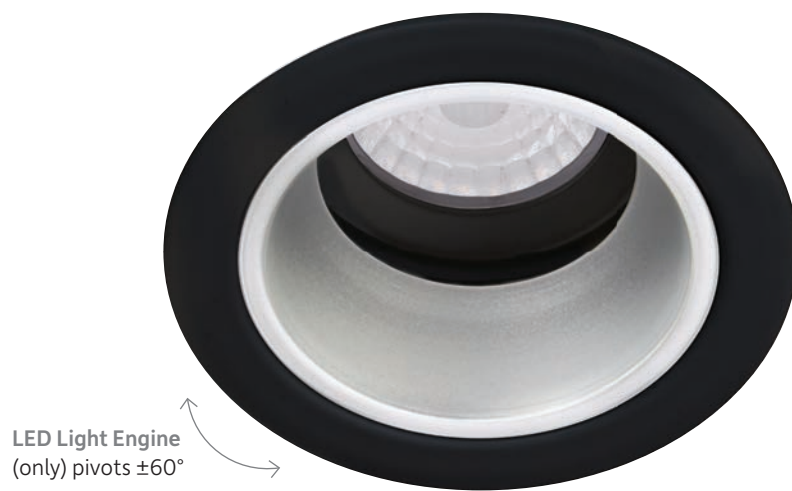
A bespoke high-end jeweller situated in the historic Lanes of Brighton.  
Beautiful designs with a passion to create stunning accessories.

# Project 90 Cone



For further information, technical details and downloads scan the **QR code** or visit [www.illumina.co.uk/project-90-cone](http://www.illumina.co.uk/project-90-cone)

A stylish downlight available in a choice of beam angles, lumen outputs and three cone colour options. Ideal for both highlighting and general lighting in multiple interior applications. Dimmable and emergency versions available.



LED Light Engine (only) pivots  $\pm 60^\circ$

**Project 90 Cone** comes in two body colours and three cone colour options:



White bezel with Black cone



White bezel with Silver cone



White bezel with White cone



Crisp and clean optic



925lm LED light engine



625lm LED light engine

## Options available:

<b>Lumen output</b>  625 925	<b>Colour temp.</b>  2700K 3000K 4000K	<b>Bezel colour</b>  White Black	<b>Cone options</b>  Black Silver White
<b>Beam angles</b>  24° 38° 60°	<b>Bezel sizes</b>  1 size	<b>Emergency</b>  Emergency	

## Specification:

<b>LED chip / CRI</b> CREE CRI >90	<b>Recessed</b>  Recessed	<b>Cut-out Ø</b> 75 mm  75 mm	<b>Dimming options</b>  DALI 2 Casambi Leading & trailing edge
<b>IP rating</b> IP 20	<b>Anti-glare</b>  Anti-glare	<b>Driver</b>  Included	



# Project 90 Cone

Southampton University / London, UK

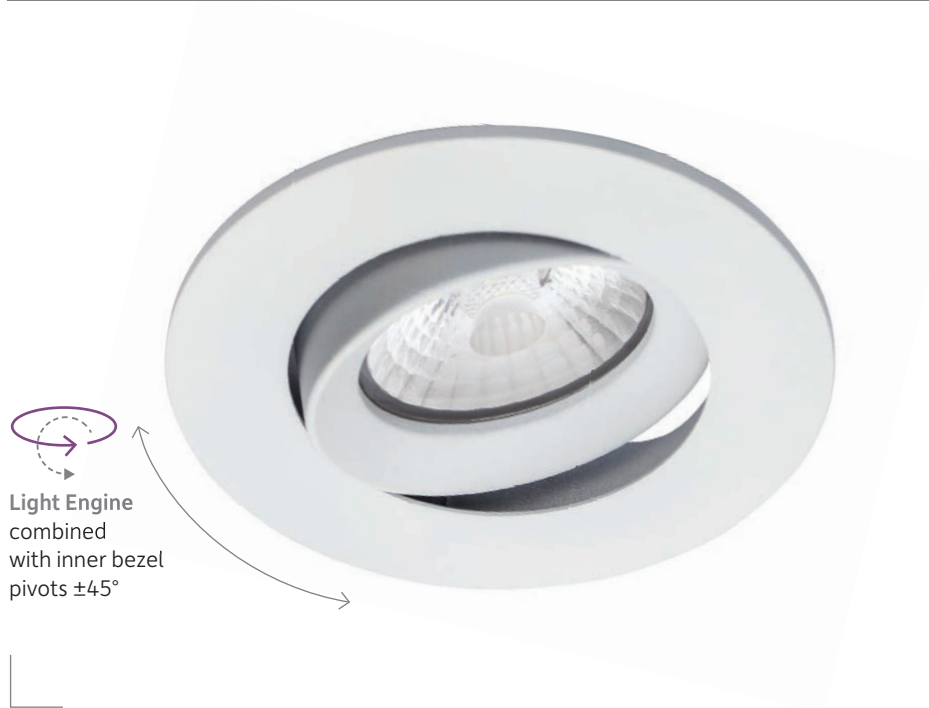
A perfect example of effective lighting design, utilising our Project 90 range to enhance this modern space.

# Project 90 Gimbal



For further information, technical details and downloads scan the **QR code** or visit [www.illumina.co.uk/project-90-gimbal](http://www.illumina.co.uk/project-90-gimbal)

A versatile gimbal downlight available in a choice of beam angles and lumen outputs. Ideal for both highlighting and general lighting in multiple interior applications. Dimmable and emergency versions available.



Light Engine combined with inner bezel pivots  $\pm 45^\circ$

**Project 90 Gimbal** is available in three LED colours, including 2700K Extra Warm White:



Black bezel



Easy twist & lock connector between downlighter & driver



Crisp and clean optic



925lm LED light engine



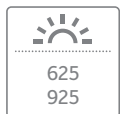
625lm LED light engine



Robust fixing clips

## Options available:

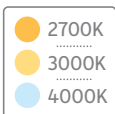
### Lumen output



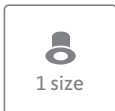
### Beam angles



### Colour temp.



### Bezel sizes



### Bezel colour



### Emergency



## Specification:

### LED chip / CRI



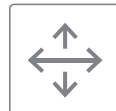
### IP rating



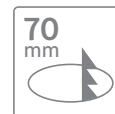
### Recessed



### Adjustable



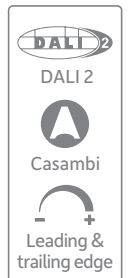
### Cut-out Ø



### Driver



### Dimming options







# Project 90 Gimbal

Liberty's London / Regent Street, UK

Liberty's is described as the '*chosen resort of the artistic shopper*', a beautiful example of retail lighting at its best.

# Project 90 Wallwash



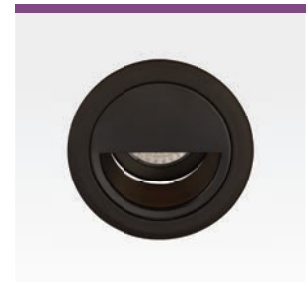
For further information, technical details and downloads scan the **QR code** or visit [www.illumina.co.uk/project-90-wallwash](http://www.illumina.co.uk/project-90-wallwash)

A quintessential wallwash downlight available in a choice of beam angles and lumen outputs. Ideal for both highlighting and general lighting applications. Dimmable and emergency versions available.



LED Light Engine (only) pivots  $\pm 60^\circ$

**Project 90 Wallwash** is available in three LED colours, including 2700K Extra Warm White:



Black Wallwash



Easy twist & lock connector between downlighter & driver



Crisp and clean optic



925lm LED light engine



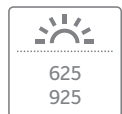
625lm LED light engine



Robust fixing clips

## Options available:

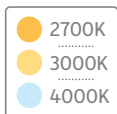
### Lumen output



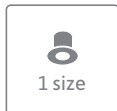
### Beam angles



### Colour temp.



### Bezel sizes



### Bezel colour



### Emergency



## Specification:

### LED chip / CRI



### IP rating



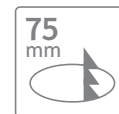
### Recessed



### Anti-glare



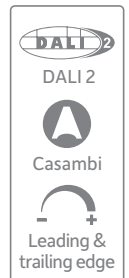
### Cut-out Ø



### Driver



### Dimming options





# Project 90 wallwash

## Charles Whitworth Suits / UK

Highlighting and accent is a must for this made to measure men's outfitters. Our Project 90 Wallwash was utilised to highlight and accentuate the intricate colours and textures to create the perfect look.

# Framelight Mini



For further information, technical details and downloads scan the QR code or visit [www.illumina.co.uk/framelight-mini](http://www.illumina.co.uk/framelight-mini)

A classic and versatile lighting solution for multiple retail, leisure and commercial applications. Fully adjustable heads that pivot  $\pm 45^\circ$  on two axes.



Heads pivot  $\pm 45^\circ$  on two axes

Note: Lumen outputs quoted are per LED head

**Framelight Mini** comes in two colours and a variety of options:



Silver Grey body



Rear of luminaire



Crisp and clean optic



Integral heat sinks



Heads pivot  $\pm 45^\circ$  on two axes



Recessed spring clips

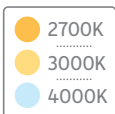
## Options available:

### Lumen output



4 x 925

### Colour temp.



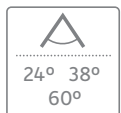
2700K  
3000K  
4000K

### Body colour



White  
Silver Grey

### Beam angles



24° 38°  
60°

### Frame size



1 size

## Specification:

### LED chip / CRI



CREE  
CRI > 90

### Recessed



### Cut-out



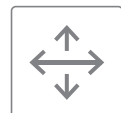
179x179  
mm

### IP rating



IP  
20

### Adjustable

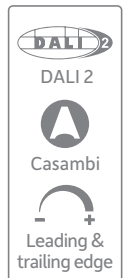


### Drivers



Included

### Dimming options



DALI 2

Casambi

Leading & trailing edge

# Framelight Mini

Southampton University / London, UK

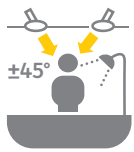
A stunning example of residential University lighting. The campus has been described as the *'modern University with all the amenities'*.

# Proseal F



For further information, technical details and downloads scan the **QR code** or visit [www.illumina.co.uk/proseal-f](http://www.illumina.co.uk/proseal-f)

This IP65, fire-rated, diecast aluminium downlight is designed for wet and humid environments, making it the complete solution for bathrooms, kitchens, exterior soffits, and fire-rated applications.



\*LED Light Engine (only) pivots  $\pm 45^\circ$  / Note: Can only be adjusted at installation



Crisp and clean optic



925lm LED light engine



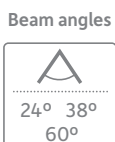
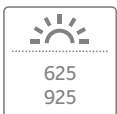
625lm LED light engine



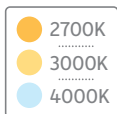
Robust fixing clips

## Options available:

### Lumen output



### Colour temp.



### Bezel colour



## Specification:

### LED chip / CRI



### Recessed



### Cut-out Ø



### Driver



### Dimming options





# Proseal F

## Hilton Hotel / UK

Award-winning, luxurious hotel chain encompassing a vibrant leading-edge design, offering singular service and remarkable local experiences in the world's most alluring locations.

# Project 50



For further information, technical details and downloads scan the **QR code** or visit [www.illumina.co.uk/project-50](http://www.illumina.co.uk/project-50)

This miniature range of aluminium, micro downlights has been designed specifically for discreet feature lighting. Useful in small retail display areas, under cabinet and shelf lighting.



**Project 50** comes in a variety of styles and options:



Open option



Baffle option



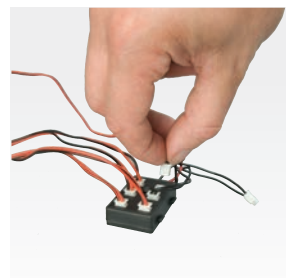
Gimbal option



Crisp and clean optic



Integral heat sink



Easy plug and socket wiring

## Options available:

<p><b>Lumen output</b></p> <p>210 253</p>	<p><b>Colour temp.</b></p> <p>3200K 6500K</p>	<p><b>Bezel colour</b></p> <p>Brushed aluminium</p>	<p><b>Style options</b></p> <p>Open Baffle Gimbal</p>
<p><b>Beam angle</b></p> <p>12°</p>	<p><b>Bezel sizes</b></p> <p>2 sizes</p>		

## Specification:

<p><b>LED chip / CRI</b></p> <p>Luxeon CRI &gt;80</p>	<p><b>Recessed</b></p>	<p><b>Cut-out Ø</b></p> <p>36/46 mm</p>	<p><b>Accessories</b></p> <p>Driver Splitter box</p>
<p><b>IP rating</b></p> <p>IP 20</p>	<p><b>Adjustable</b></p>		





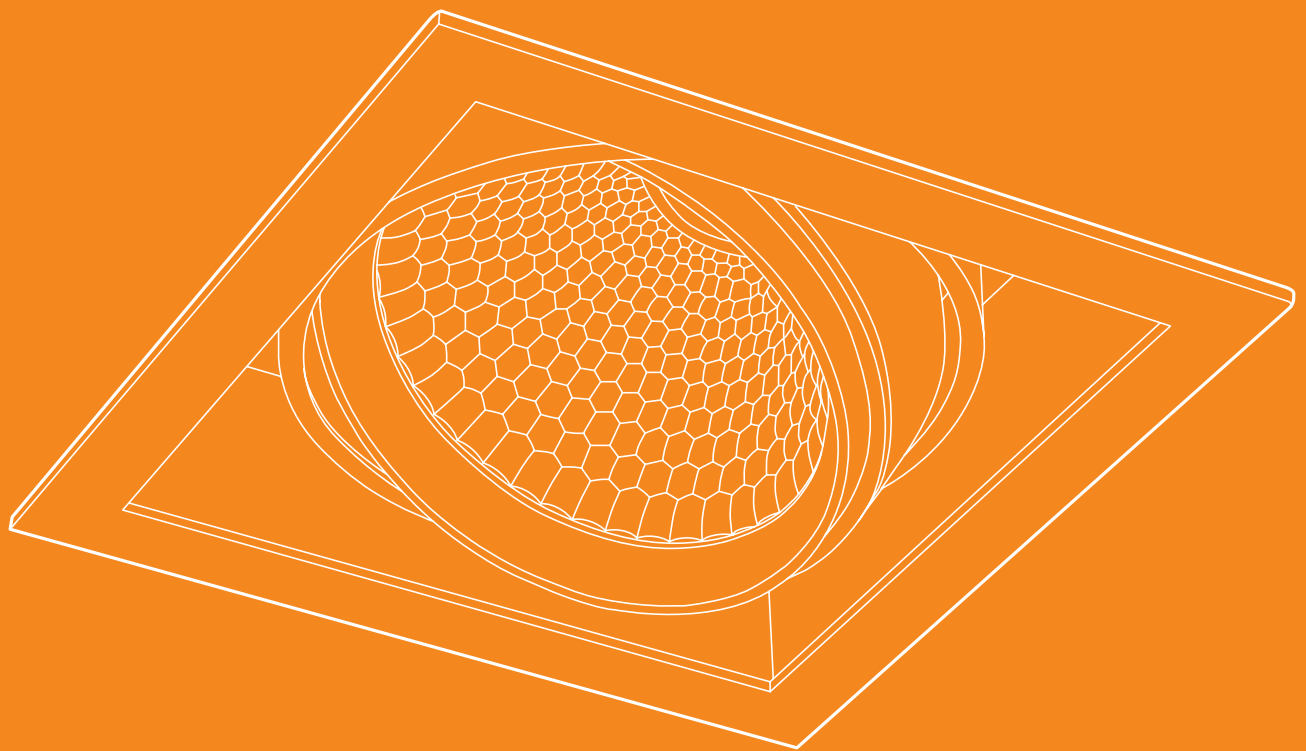
# Project 50

## Backes & Strauss / London, UK

An English company that designs and produces high-end timepieces and jewellery. Founded in 1789, it is one of the oldest diamond companies in the world. The London office, established in 1814, is described as 'A Jewel in the Crown'.

# Commercial downlights

---

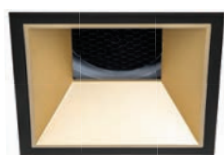


Commercial downlights are a popular way of providing light for office environments, circulation zones, office perimeter areas and retail applications.

# Commercial downlights product range

07

An extensive range of highly innovative, commercial downlights suitable for multiple environments.



Infinia 108



Infinia Mini 112



Arc 114



Framelight 116



Highlux 135 118



Highlux Surface 120



Highlux 160 122



Highlux 175 124



Twinlux Low-Glare 126



Hexseal 128



Lightseal 130

Introducing

# Infinia

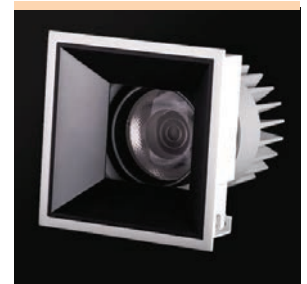
## Infinite possibilities.

A concept of unique customisable downlights with extensive options ideally suited for use in hotels, galleries and museums.



### Dim to warm

The 900lm small head is a 'Dim to Warm'. At 100% it exhibits a Warm White light (3000K) but it can be dimmed down to the colour of Candle light (1800K).

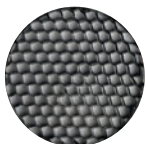


illumina /  
products /  
**Infinia**

### Features

Four lumen outputs. Four beam angles. Four bezel options. Multiple colour finishes. A variety of trim, colour & filtering options.

### Filter options:



#### Honeycomb

Reduces glare



#### Spreader

Elongates and spreads the luminares beam



#### Solite

Provides reduced glare delivering a soft beam without striations

### Find your Infinia solution...



Round Black  
Black chrome cone



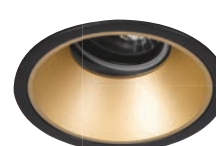
Square Black  
Black cone



Round White  
Gold cone



Square White  
Silver cone



Round Black  
Gold cone



Square Black  
White wallwash

## The Infinia range is available with an extensive number of options.

For specification, assistance or any special requests on the Infinia range please contact Illuma.

### 7 custom options

#### 7 Options

The Infinia range can be customised with seven different options:

1

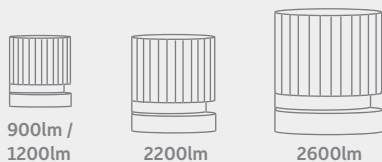
#### Colour temperature options

Our Infinia range of downlights is designed to cater for a diverse range of applications. Our light engines are available in three Kelvin temperatures, often referred to as CCT (correlated colour temperature). Choose from Extra Warm White (2700K), Warm White (3000K) and Neutral White (4000K) options.

2

#### Lumen output options

The Infinia family of LED downlights was designed with multi applications in mind. Choose from four lumen output options in three different sizes, including Small (900lm & 1200lm), Medium (2200lm) and Large (2600lm).



3

#### Dimming options

Controls are an important factor when it comes to creating the desired mood in any interior. Our Infinia family is available in a variety of dimming options. Choose from DALI 2, Casambi and Leading & Trailing Edge dimmable options.

4

#### Beam options

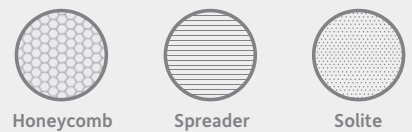
As beam angles are the lighting designer's pallet, the Infinia range offers a choice of beam angles, including 15°, 24°, 38° and 60° to suit all environments.



5

#### Filter options

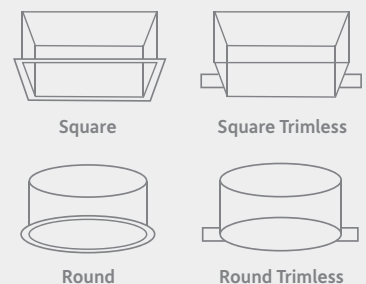
Filters can control the intensity and projection of light. Choose from three filter options including Honeycomb, Spreader and Solite – must be specified at the time of ordering.



6

#### Bezel options

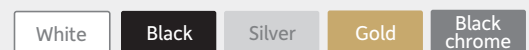
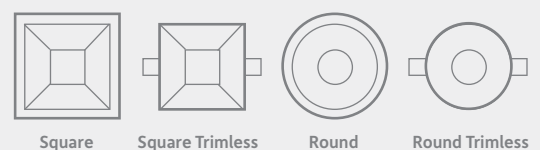
The Infinia family of LED downlights was specifically designed with versatility and flexibility in mind. Choose from four bezel options in three different sizes, including Square, Square Trimless, Round and Round Trimless.



7

#### Trim / Colour options

The aesthetics of a lighting solution can complete a lighting design. The Infinia range is available in a variety of trim / colour options\*.



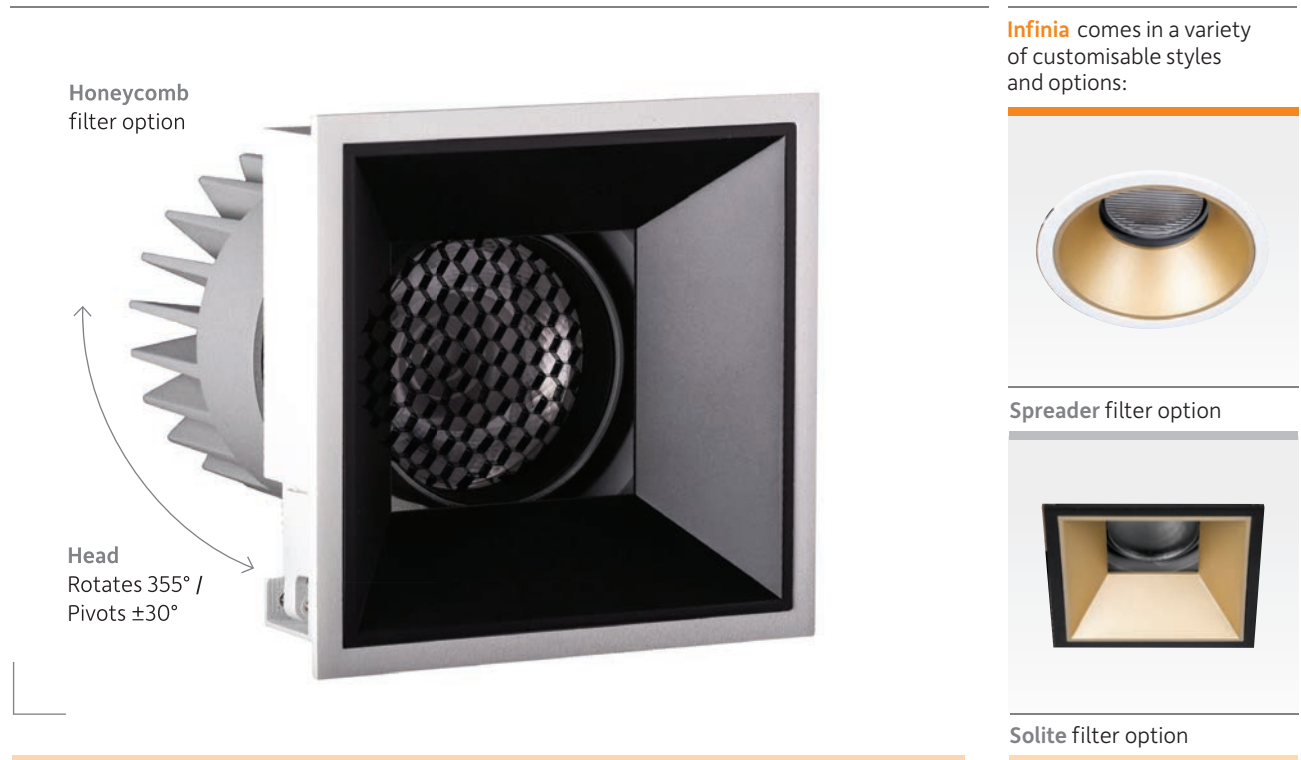
\*Alternative colour finishes may be available by special request. Minimum order quantities may apply - enquire at the time of specification.

# Infinia *continued*



For further information, technical details and downloads scan the QR code or visit [www.illumina.co.uk/infinia](http://www.illumina.co.uk/infinia)

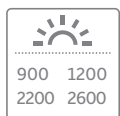
A comprehensive and unique range of downlights available in extensive options, designed with versatility and flexibility in mind. Fully adjustable heads that rotate 355° and pivot 30°. Emergency options available.



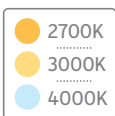
**Infinia** comes in a variety of customisable styles and options:

## Options available:

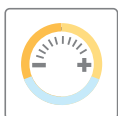
### Lumen output



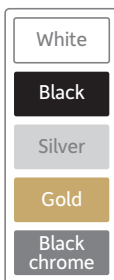
### Colour temp.



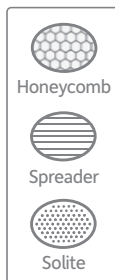
### Dim to warm



### Trim colour

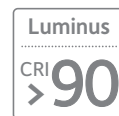


### Filters



## Specification:

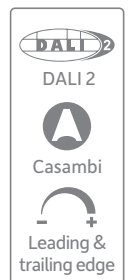
### LED chip / CRI



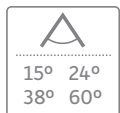
### Recessed



### Dimming options



### Beam angles



### Bezel sizes



### Emergency



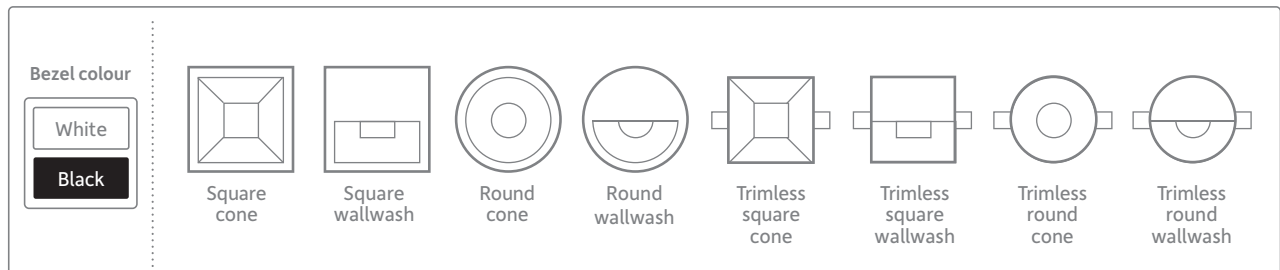
### IP rating



### Adjustable



### Bezel options



# Infinia

Rhodus House / Canterbury, UK

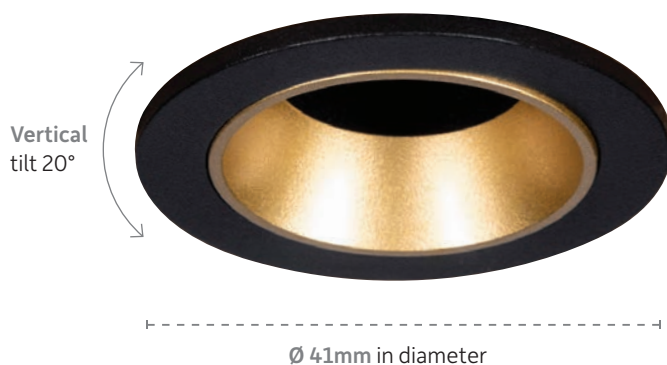
Bespoke accommodation offering a range of studio and en-suite student rooms located in the heart of the city.

# Infinia Mini



For further information, technical details and downloads scan the **QR code** or visit [www.illumina.co.uk/infinia-mini](http://www.illumina.co.uk/infinia-mini)

This miniature range of aluminium downlights has been designed specifically for discreet feature lighting. Ideal for small retail displays, hotel corridors and high-end residential applications.

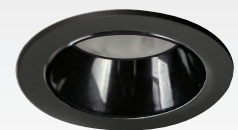


Comes complete with the following **cone options** to suit any interior:  
Gold Cone / Chrome Cone / White Cone / Black Cone

**Infinia Mini** comes in a variety of styles and options:



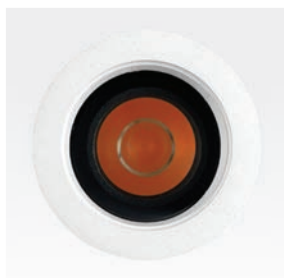
White bezel with White Cone



Black bezel with Black Cone



Four cone options included



Crisp and clean optic



Inbuilt heat sink



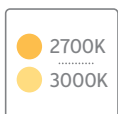
Vertical tilt 20°

## Options available:

Lumen output



Colour temp.



Bezel colour



Beam angle



Bezel size



## Specification:

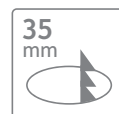
LED chip / CRI



Recessed



Cut-out Ø



Driver



Dimming



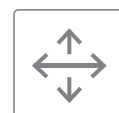
IP rating



Anti-glare



Adjustable





# Infinia Mini

## Hilton Hotel / UK

An award-winning hotel chain with luxurious properties, leading-edge design, exceptional service, and unforgettable local experiences in alluring locations.

# Arc



For further information, technical details and downloads scan the **QR code** or visit [www.illumina.co.uk/arc](http://www.illumina.co.uk/arc)

A downlighting solution for retail, leisure and commercial applications where the even illumination of a vertical surface is required. Fully adjustable head that rotates 355° and pivots ±60°. Available in two sizes.



Head rotates 355° / pivots ±60°

Arc comes in two body sizes and a choice of two beam angles:



Arc 160 (2400lm)



Arc 200 (4000lm)



Crisp and clean optic



Integral heat sink



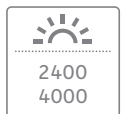
Adjustable head



Recessed spring clips

## Options available:

### Lumen output



### Colour temp.



### Bezel colour



### Beam angles



### Bezel sizes



## Specification:

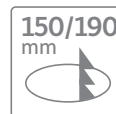
### LED chip / CRI



### Recessed



### Cut-out Ø



### IP rating



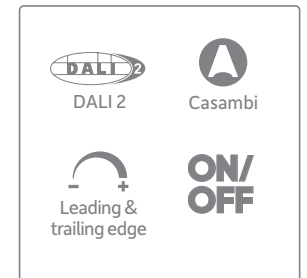
### Adjustable



### Driver



### Dimming options





Arc

## Liverpool Football Club Store / Liverpool, UK

One of England's most successful teams. The retail store situated in the heart of the city, contains remarkable trophies, souvenirs and items of clothing that represent the teams' passion for football.

# Framelight



For further information, technical details and downloads scan the QR code or visit [www.illumina.co.uk/framelight](http://www.illumina.co.uk/framelight)

A quintessential lighting solution for multiple retail, leisure and commercial applications that promotes a clean looking, unobtrusive ceiling.



**Framelight** is available in Single, 2 Way and 3 Way versions:



Single Framelight



Integral heat sinks



Crisp and clean optic



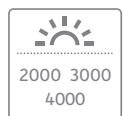
3 Way Framelight (individual drivers supplied)



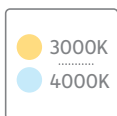
Strong fixing clips

## Options available:

### Lumen output



### Colour temp.



### Body colour



### Beam angles



### Frame sizes



## Specification:

### LED chip / CRI



### Recessed



### Cut-out (single)



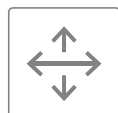
### Cut-out (2 Way)



### IP rating



### Adjustable



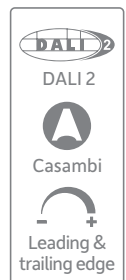
### Cut-out (3 Way)



### Driver (s)



### Dimming options





# Framelight

MCM / Knightsbridge, UK

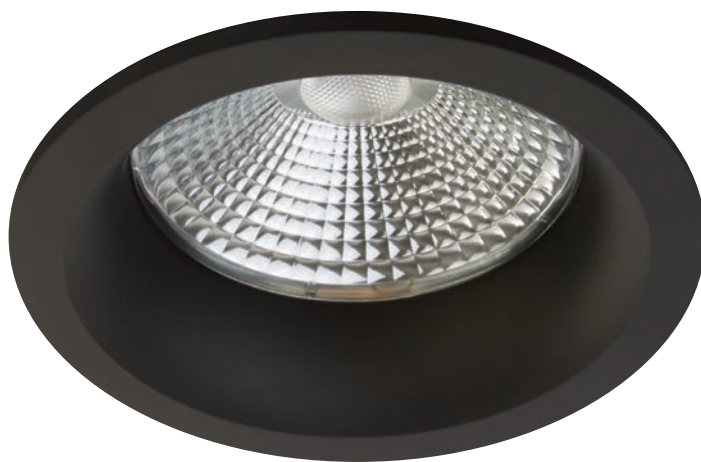
MCM is a globally diverse, multicultural brand founded in the era of bright lights, jetset and disco, steeped in a rich heritage. Celebrated worldwide as an established and rising creative force.

# Highlux 135



For further information, technical details and downloads scan the QR code or visit [www.illumina.co.uk/highlux-135](http://www.illumina.co.uk/highlux-135)

A contemporary range of timeless downlights available in a choice of beam angles, lumen outputs and styles. Highly suited for retail, leisure and display applications that require general lighting.



**Highlux 135** is a high output IP44 downlighter available in a variety of styles:



White bezel with White Cone



White bezel with Black Baffle



Crisp and clean optic



Integral heat sink



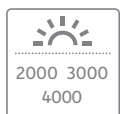
Trimless White cone



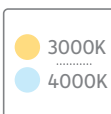
White bezel Open

## Options available:

### Lumen output



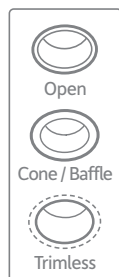
### Colour temp.



### Bezel colour



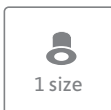
### Style options



### Beam angles



### Bezel sizes



### Emergency



## Specification:

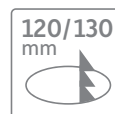
### LED chip / CRI



### Recessed



### Cut-out Ø



### Dimming options



### IP rating



### Anti-glare



### Driver



# Highlux 135

Crown Diamond Jewellers / Brighton, UK

Beautifully designed jewellery flawlessly illuminated by the subtle application of the Highlux 135. The perfect product to illuminate window displays when competing with daylight.

# Highlux Surface



For further information, technical details and downloads scan the QR code or visit [www.illumina.co.uk/highlux-surface](http://www.illumina.co.uk/highlux-surface)

A contemporary surface mounted luminaire, ideally suitable for leisure and commercial applications that require general or feature lighting.



Highlux Surface comes in two colour options:



Black option



Side profile



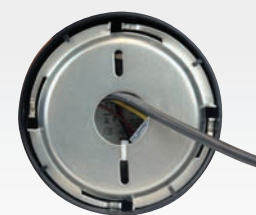
Crisp and clean optic



Silver inner reflector



Surface fixing plate



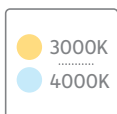
Back of luminaire

## Options available:

### Lumen output



### Colour temp.



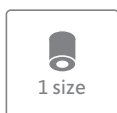
### Body colour



### Beam angles



### Body size



## Specification:

### LED chip / CRI



### Surface mount



### IP rating



### Driver



### Dimming





# Highlux Surface

Holiday Villa / Palm Jumeirah, Dubai

With its clean design proportions and attractive reflector, the Highlux Surface is perfectly suited to any interior space that requires a well-proportioned surface-mounted solution.

# Highlux 160



For further information, technical details and downloads scan the **QR code** or visit [www.illumina.co.uk/highlux-160](http://www.illumina.co.uk/highlux-160)

A directional downlight available in various outputs and a choice of beam angles. Adjustable head pivots  $\pm 30^\circ$ . This range is ideal for retail, leisure and display applications that require general and flexible lighting.



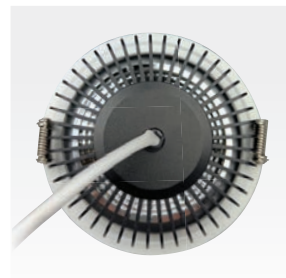
Head pivots  $\pm 30^\circ$



Crisp and clean optic



Adjustable head pivots  $\pm 30^\circ$



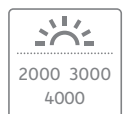
Integral heat sink



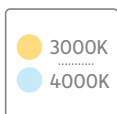
Recessed spring clips

## Options available:

### Lumen output



### Colour temp.



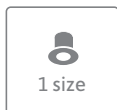
### Bezel colour



### Beam angles



### Bezel size



## Specification:

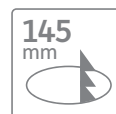
### LED chip / CRI



### Recessed



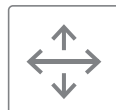
### Cut-out Ø



### IP rating



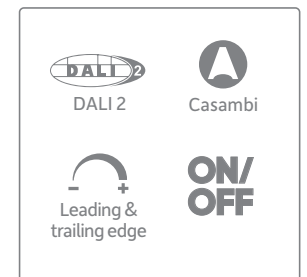
### Adjustable



### Driver



### Dimming options





# Highlux 160

## Skinnydip / London, UK

A fun and quirky accessory shop, known for its unique and creative designs. Founded in 2011, they have now expanded to clothing and lifestyle products, collaborating with some well-established brands.

# Highlux 175



For further information, technical details and downloads scan the **QR code** or visit [www.illumina.co.uk/highlux-175](http://www.illumina.co.uk/highlux-175)

This luminaire provides the optimum solution for large-area environments with high ceilings utilising 9,000 lumens, ideally suited for retail, leisure and commercial applications.



**Thermal management** is key when it comes to high power LED downlighters such as our **Highlux 175** which produces a 9000lm output:



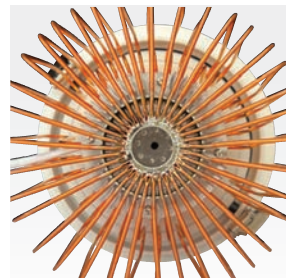
**Triple heat sink:** The powerful LED chip is thermally protected by a large copper cage. This combined with a large aluminium heat sink, with the LED chip also mounted on a solid steel disc, maximises the performance and longevity of the LED.



Crisp and clean optic



Recess depth of 190mm



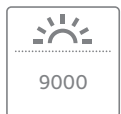
Unique heat sink design



Recessed spring clips

## Options available:

Lumen output



9000

Colour temp.



3000K  
4000K

Bezel colour



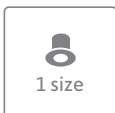
White

Beam angles



28° 38°

Bezel size



1 size

## Specification:

LED chip / CRI

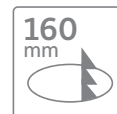


CREE  
CRI > 90

Recessed



Cut-out Ø



160 mm

Driver



Included

IP rating

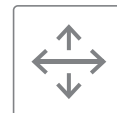


IP 20

Anti-glare



Adjustable



# Highlux 175

## John Lewis & Partners / UK

One of the biggest and renowned retail businesses in the UK, specialises in quality clothing, home, beauty, and food products. It was founded in 1864 and has since expanded to over 30 stores.

OTIS

# Twinlux Low-Glare



For further information, technical details and downloads scan the QR code or visit [www.illumina.co.uk/twinlux-low-glare](http://www.illumina.co.uk/twinlux-low-glare)

Introducing our specialised downlighting solution for superior glare control. Available in two sizes and an emergency option for added safety. Experience the perfect balance of functionality and comfort.



**Twinlux Low-Glare** is available in two sizes and two lumen outputs:



Mini (3000lm)



Maxi (4500lm)



Crisp and clean optic



Quality construction



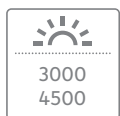
Pre-wired head



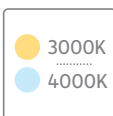
Integrated clip mechanism

## Options available:

### Lumen output



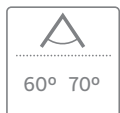
### Colour temp.



### Bezel colour



### Beam angles



### Bezel sizes



### Emergency



## Specification:

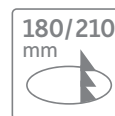
### LED chip / CRI



### Recessed



### Cut-out Ø



### IP rating



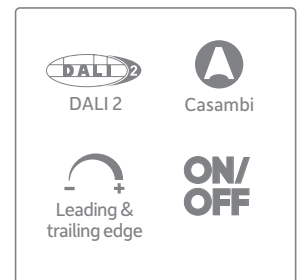
### Anti-glare



### Driver



### Dimming options





# Twinlux Low-Glare

## MINI / UK

Few cars can claim to be as iconic and recognisable as the MINI. The MINI wings logo perfectly captures the essence of being British. Sustainability is part of MINI's DNA.

# Hexseal



For further information, technical details and downloads scan the QR code or visit [www.illumina.co.uk/hexseal](http://www.illumina.co.uk/hexseal)

This low glare honeycomb design with multi-diffused optics, is flexible and very slimline making it ideally suited for multiple applications, with shallow ceiling voids. Available in two sizes with emergency and dimmable options.

**Hexseal** is a shallow low glare IP44 rated downlighter with a high CRI:



Small (2000lm) White



Large (3000lm) Black



Multi-diffused optics



Shallow profile (40mm depth)



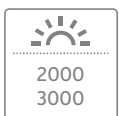
Integral heat sink



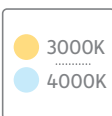
Strong fixing clips

## Options available:

### Lumen output



### Colour temp.



### Bezel colour



### Beam angles



### Bezel sizes



### Emergency



## Specification:

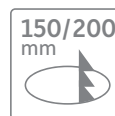
### LED chip / CRI



### Recessed



### Cut-out Ø



### IP rating



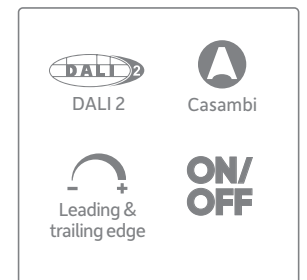
### Anti-glare



### Driver



### Dimming options





# Hexseal

## Cineplex / Birmingham, UK

The ultimate movie experience is fully enhanced and augmented by the Hexseal's multi-diffused optics and flexible slimline aesthetic, providing a truly immersive viewing experience.

# Lightseal



For further information, technical details and downloads scan the **QR code** or visit [www.illumina.co.uk/lightseal](http://www.illumina.co.uk/lightseal)

This slim, IP65 rated downlight is ideally suited for applications with a low ceiling and shallow voids due to its wide beam angle and minimal recess depth. Available in two sizes with emergency and dimmable options.



**Lightseal** is a shallow IP65 rated downlighter with an opal diffuser:



Mini (1500lm)



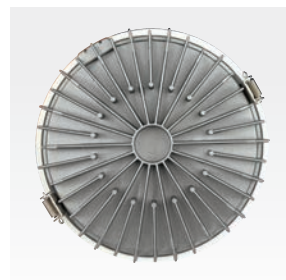
Maxi (2200lm)



Opal diffused optic



Shallow profile (55mm depth)



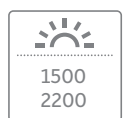
Integral heat sink



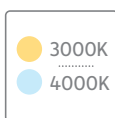
Strong fixing clips

## Options available:

### Lumen output



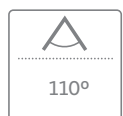
### Colour temp.



### Bezel colour



### Beam angles



### Bezel sizes



### Emergency



## Specification:

### LED chip / CRI



### Recessed



### Cut-out Ø



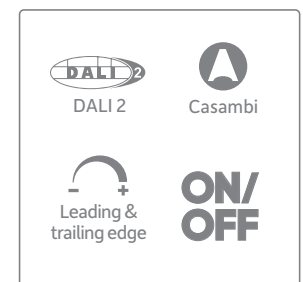
### IP rating



### Driver



### Dimming options



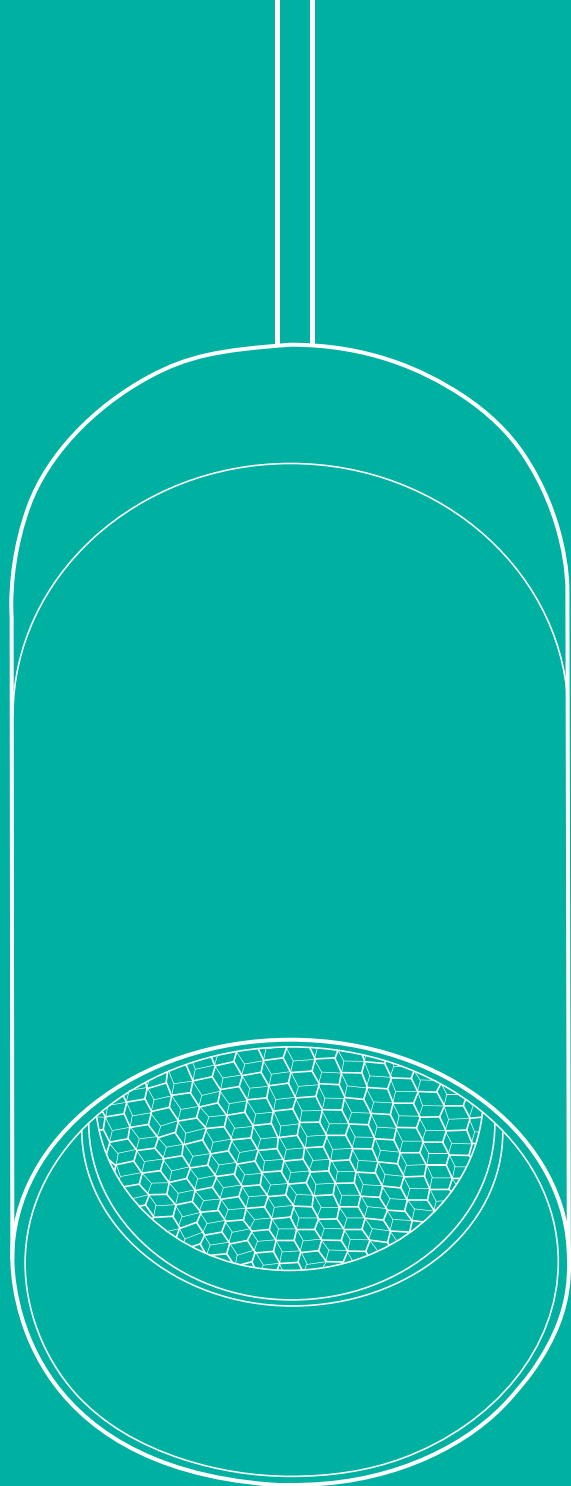
# Lightseal

Polmar Foods Supermarket / London, UK

Their bright and spacious, modern new store in Wembley offers a wide variety of products from Eastern Europe.

# Feature

---



Feature lighting extends beyond ambient and accent lighting to accentuate desired characteristics, create moods or orientation functions. Feature lighting provides an array of solutions for many diverse applications.

# Feature product range

A pioneering range of stylish feature solutions, ideal for environments requiring mood creation or to create an eye-catching focal point.



2ube Pendant 134



Disk Pendant 136



Disk Wall 138



Upline 140



Lumaseal 142



Via 144

# 2ube Pendant



For further information, technical details and downloads scan the QR code or visit [www.illumina.co.uk/2ube-pendant](http://www.illumina.co.uk/2ube-pendant)

A stylish and compact pendant. Ideally suited for restaurants, bars, cafes, foyers and receptions where low glare feature lighting is required to create a warm inviting mood.



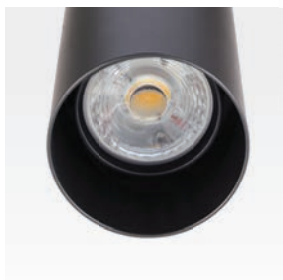
The 1470lm head is a Dim to warm. At 100% it exhibits a Warm White light (3000K) but it can be dimmed down to 2000K which is close to the colour of Candle light (1800K)



**2ube Pendant** comes with a 1350mm power cable as standard. **Recessed Mono Point** and **Surface Plate** can be adjusted on site. **Track Adaptor** versions are made to order and the length of power cable must be specified at the time of ordering:



Honeycomb Louvre option



Standard option



Surface Plate option



Recessed Mono Point option



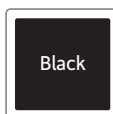
Track adaptor option

## Options available:

### Lumen output



### Body colour



### Track mount



### Recessed mono



### Option styles



## Specification:

### LED chip / CRI



### IP rating



### Mono cut-out Ø



### Anti-glare



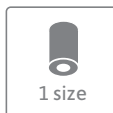
### Dimming



### Beam angles



### Body size



### Surface mount



# 2ube Pendant

## Coffee House Ninety Nine / UK

This cosy independent coffee shop, known for its unique coffees from around the world, provides a diverse selection for customers. A relaxed and inviting atmosphere encourages customers to linger and socialise. The 2ube Pendant emphasises this ambient tone by setting the mood with its custom dim to warm feature.

# Disk Pendant



For further information, technical details and downloads scan the **QR code** or visit [www.illumina.co.uk/disk-pendant](http://www.illumina.co.uk/disk-pendant)

A contemporary range of circular pendants in different sizes. Perfect for cafes, restaurants, foyers and chill out areas in which a comfortable but practical level of illumination is required.



**Disk Pendant** comes in three sizes and a variety of options:



Small 120mm Ø / 1200lm



Medium 200mm Ø / 2500lm



Large 300mm Ø / 3000lm



Opal diffuser



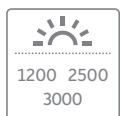
Adjustable cable 1650mm



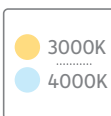
Recessed spring clips

## Options available:

### Lumen output



### Colour temp.



### Body colour



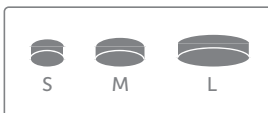
### Recessed mono



### Beam angles



### Body sizes



## Specification:

### LED chip / CRI



### Mono cut-out Ø



### IP rating



### Wide beam



### Dimming options







# Disk Pendant

## The Park Hotel / UK

This luxurious and quirky lobby serves as a hub for guests to gather and interact. A modern and sleek look, designed with elegant décor creates a memorable and enjoyable experience for the guests. The Disk Pendant compliments this space perfectly, creating an atmospheric ambience.

# Disk Wall



For further information, technical details and downloads scan the **QR code** or visit [www.illumina.co.uk/disk-wall](http://www.illumina.co.uk/disk-wall)

A contemporary adjustable wall light ideal for providing indirect, glare-free lighting for multiple interiors. Perfect for providing a diffused uplight for any interior space.



Opal diffuser



Head pivots  $\pm 90^\circ$



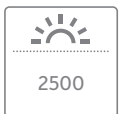
Positioned vertically



Positioned horizontally

## Options available:

### Lumen output



### Colour temp.



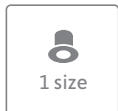
### Body colour



### Beam angles



### Body size



### Vertical mount

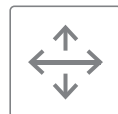


## Specification:

### LED chip / CRI



### Adjustable



### IP rating



### Wide beam



### Dimming



# Disk wall

## Milner Hall / Winchester, UK

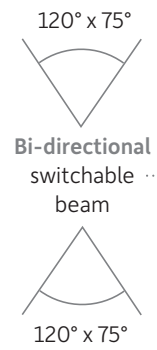
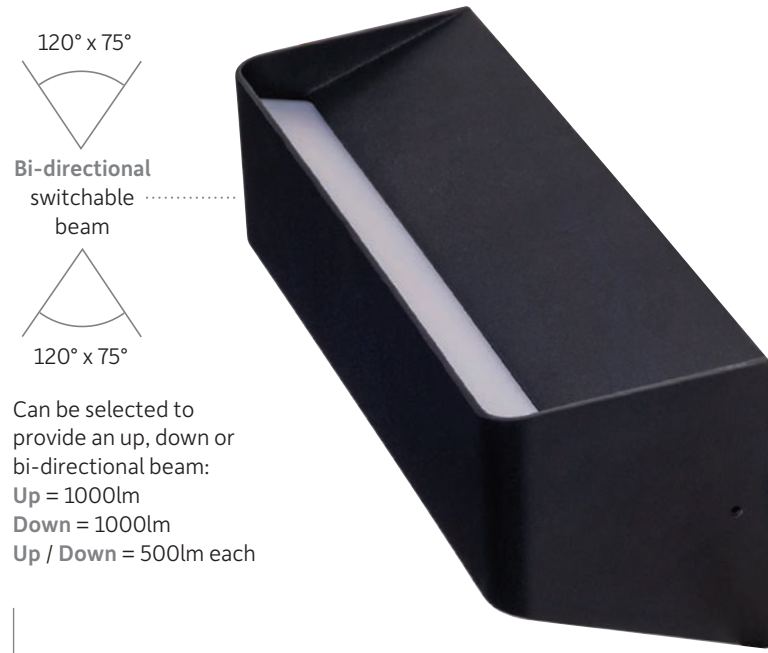
A former chapel in Winchester, one of the oldest structures in the city of great architectural and religious importance. The Disk Wall perfectly marries the ancient and modern aspects of this building.

# Upline



For further information, technical details and downloads scan the QR code or visit [www.illumina.co.uk/upline](http://www.illumina.co.uk/upline)

A slim direct and bi-direct switchable wall light providing low-glare lighting for modern interiors. With an IP54 rating, the Upline can also be used for exterior applications.



Can be selected to provide an up, down or bi-directional beam:  
 Up = 1000lm  
 Down = 1000lm  
 Up / Down = 500lm each

**Upline** is a slim, unobtrusive wall light that is suitable for interior or exterior use:



White option



Black option



Straight on view of front profile



Slim profile



View of top diffuser

## Options available:

<b>Lumen output</b>  1000	<b>Colour temp.</b>  3000K  4000K	<b>Body colour</b>  White  Black
<b>Beam angles</b>  120 x 75°	<b>Body size</b>  1 size	<b>Vertical mount</b> 

## Specification:

<b>LED chip / CRI</b> Citizen CRI >80	<b>Bi-directional</b> 	<b>Dimming</b>  Leading & trailing edge
<b>IP rating</b> IP 54	<b>Anti-glare</b> 	



# Upline

## Private Apartments / Northern Quarter, Manchester, UK

A large luxury development in Manchester's Northern Quarter used the Upline due to its clean lines and flexibility. It was utilised in both interior and exterior areas, adding significantly to the overall look of the development.

# Lumaseal



For further information, technical details and downloads scan the **QR code** or visit [www.illumina.co.uk/lumaseal](http://www.illumina.co.uk/lumaseal)

A robust, IP65 rated solution, highly suitable for general and ambient lighting environments. Including schools, universities, retail, leisure and commercial applications.



Microwave sensor option available



**Lumaseal** comes in two sizes and a variety of options:



Small 350mm Ø / 1500lm



Large 450mm Ø / 2200lm



Opal diffuser rated at IK10



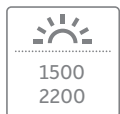
Rounded design



Easy open latch

## Options available:

### Lumen output



### Colour temp.



### Body colour



### Surface mount



### Microwave sensor



## Specification:

### LED chip / CRI



### Wide beam



### Beam angles



### Body sizes



### Vertical mount



### Emergency



### IP rating





# Lumaseal

## HTL Office Block / UK

A modern and contemporary organisation providing office space to established brands and businesses. The Lumaseal fits their sleek and minimalistic designs.

# Via



For further information, technical details and downloads scan the QR code or visit [www.illumina.co.uk/via](http://www.illumina.co.uk/via)

An unobtrusive range of interior lighting modules and covers which can be used for orientation and decorative lighting purposes. Available with three aluminium cover styles.



Note: The Flush cover requires a recess

Via comes in a variety of cover styles and options:



Flush cover



Dome cover



Eyelid cover



Choose a base unit



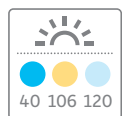
Install the base unit



Attach the appropriate cover

## Options available:

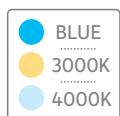
### Lumen output



### Beam angles



### Colour temp.



### Body size



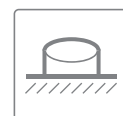
### Cover colour



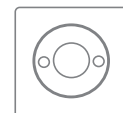
### Semi-recessed



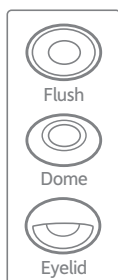
### Surface mount



### Base unit



### Cover styles



## Specification:

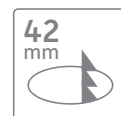
### LED chip / CRI



### IP rating



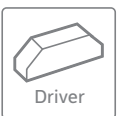
### Recess Ø



### Wide beam



### Accessories







# Via

## Wembley Farm House / Keyworth, UK

A home with a mix of modern and antique styles. Based in the countryside with amazing interiors recently refurbished. The unobtrusive Via fits perfectly into this artefactual residence.



# Exterior product range

A unique range of stylish exterior solutions, ideal for environments requiring mood and feature lighting.



Signspot

148



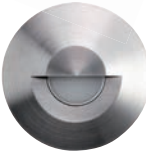
Signled

150



Pathfinder

152



Camino

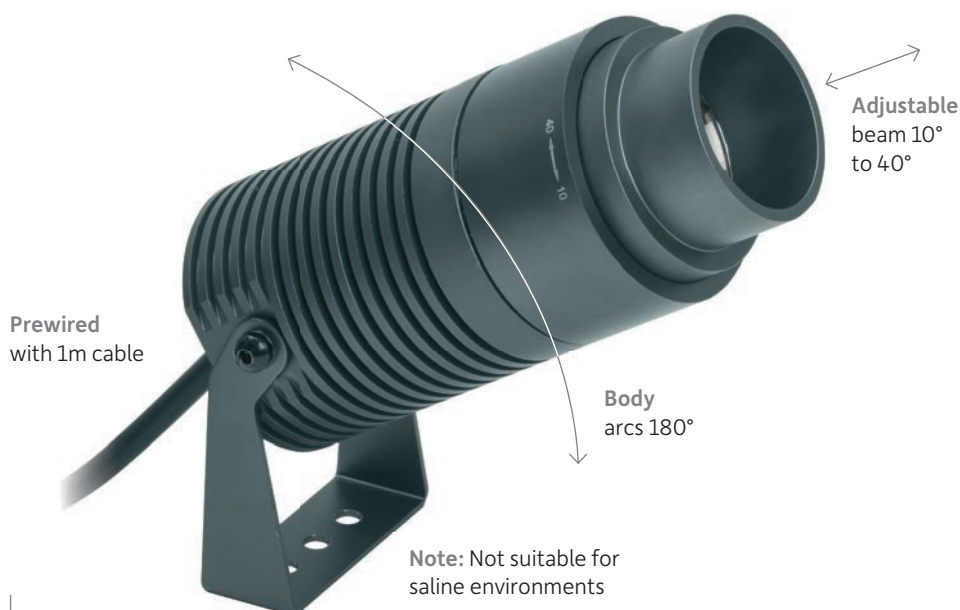
154

# Signspot



For further information, technical details and downloads scan the QR code or visit [www.illumina.co.uk/signspot](http://www.illumina.co.uk/signspot)

This robust IP67 rated, exterior spotlight has been developed specifically for exterior use. With its variable beam, it provides the perfect flexible solution for highlighting signage or horticultural features.



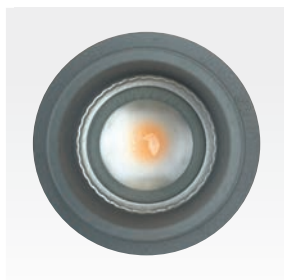
**Signspot** is a high quality adjustable beam exterior spotlight:



Allen key bolt lock



IP67 rated (waterproof)



Optic with inbuilt water drain



Mounting bracket included



Ground spike included



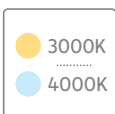
High quality metal gland

## Options available:

### Lumen output



### Colour temp.



### Body colour



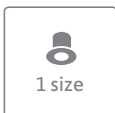
### Ground spike



### Beam angles



### Body size



### Surface mount



## Specification:

### LED chip / CRI



### Anti-glare



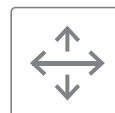
### Variable beam



### IP rating



### Adjustable





# Signspot

## Church of St. Edward King & Martyr / Castle Donington, UK

A church that has been in the heart of the Castle Donington community for over 900 years. The Signspot blends discreetly into the church yard environment, adding emphasis to the Church's information board.

# Signled



For further information, technical details and downloads scan the **QR code** or visit [www.illumina.co.uk/signled](http://www.illumina.co.uk/signled)

The complete lighting solution for interior and exterior signage. Available over two colour temperatures in a variety of lengths, its ideal for the even illumination of large format signs.

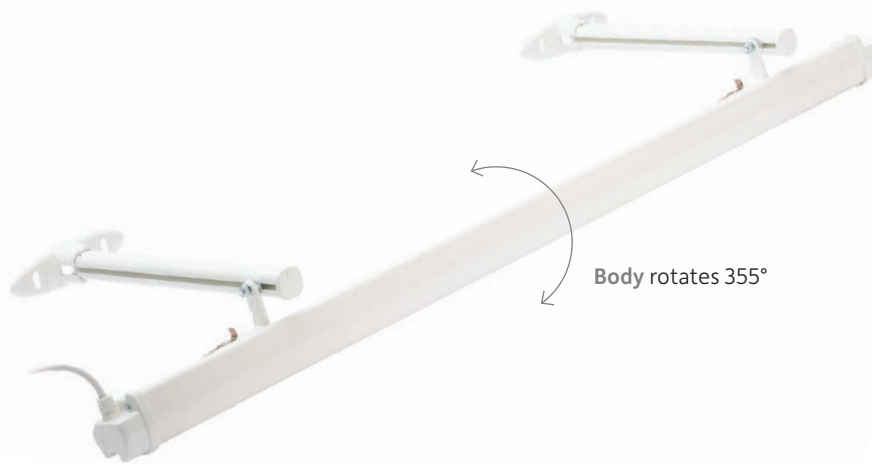
**Signled** comes in two colours and a range of sizes:



300mm wall brackets included



High quality metal glands



Body rotates 355°

Note: Other lengths are available on request



Magnifying optic



Adjustable arms



750mm of flex included, fed into the left side (viewed from street)

## Options available:

### Lumen output

☀️	
● 3000K	● 6000K
XS 447	497
S 1098	1221
M 2198	2442
L 3298	3663
XL 3663	4070

### Colour temp.

● 3000K	● 6000K
---------	---------

### Beam angles



### Body colour

White
Black

### Surface mount



### Vertical mount



### Body sizes / Length (mm)

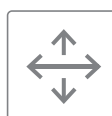
XS	S	M	L	XL
610	1524	3048	4572	6096

## Specification:

### LED chip / CRI

Nichia
CRI >80

### Adjustable



### IP rating

IP
65

# BOXPARK

URBANEARS

ABUZE

ONEPIECE

ONE TRUE SAXON

BOXFRESH

## Signled

### BOXPARK / London, UK

BOXPARK brings communities together by providing the best street food, drinks and entertainment under one roof. The three locations are in the heart of their respective London boroughs, each one offering a unique experience.

# Pathfinder



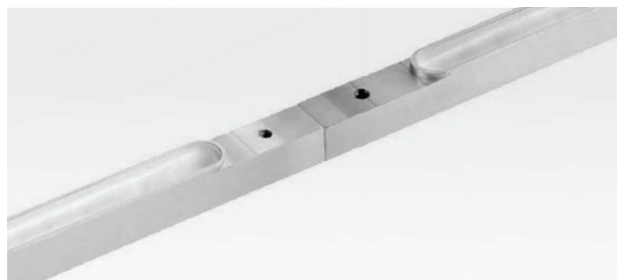
For further information, technical details and downloads scan the **QR code** or visit [www.illumina.co.uk/pathfinder](http://www.illumina.co.uk/pathfinder)

Our Pathfinder is tailor-made for tubular profiles, making it perfect for handrails that provide safe navigation for routes and walkways. It is offered in four different lumen outputs over two lengths, all of which are IP67 rated.

**Pathfinder** is available in two lengths with two LED colour temperature options:



Anodised aluminium



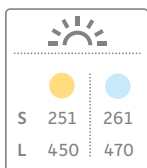
Joinable fittings



Accessories

## Options available:

### Lumen output



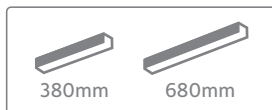
### Colour temp.



### Body colour



### Body sizes



## Specification:

### LED chip / CRI



### IP rating



### 380mm option Cut-out



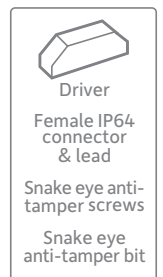
### 680mm option Cut-out



### Joinable



### Accessories







# Pathfinder

Brisbane City Council / Brisbane, Australia

The council have installed the Pathfinder handrail lighting system on pedestrian developments throughout the city. This excellent system is an ideal solution for dark pathways and stairs.

# Camino



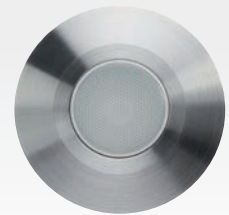
For further information, technical details and downloads scan the **QR code** or visit [www.illumina.co.uk/camino](http://www.illumina.co.uk/camino)

An unobtrusive range of exterior lighting modules which can be used for orientation and decorative lighting purposes. Available in three, marine grade stainless steel, cover styles.

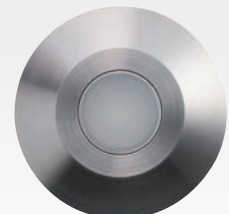
**Camino** is available in three marine grade steel cover options:



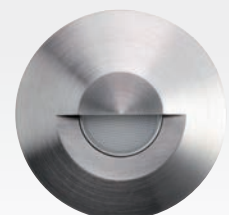
Note: The Flat cover requires a recess



Flat stainless steel cover



Cone stainless steel cover



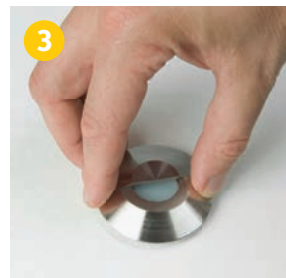
Step stainless steel cover



1 Choose a base unit



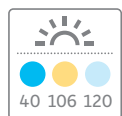
2 Install the base unit



3 Attach the appropriate cover

## Options available:

### Lumen output



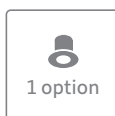
### Beam angles



### Colour temp.



### Body size



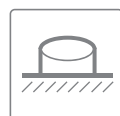
### Cover colour



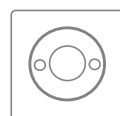
### Semi-recessed



### Surface mount



### Base unit



### Option styles



## Specification:

### LED chip / CRI



### IP rating



### Recess Ø



### Wide beam



### Accessories





# Camino

## Monty's Bakehouse / Surrey, UK

This Surrey-based company offers eco-friendly food-to-go solutions for sports venues, airports, universities, and offices. Monty's are dedicated to providing high-quality, sustainable meals with thoughtful packaging.

# Emergency

---



Emergency lighting offers a variety of solutions that allow for the safe evacuation of a premise when the mains supply fails.

# Emergency product range

A reliable range of designated emergency solutions for many diverse applications and environments.



Emlux Duo 158



Emlux Twinspot 160



Emlux Discrete 162



Emlux Sign 164



Emlux Bulkhead 164



Emlux Sign 164

# Emlux Duo



For further information, technical details and downloads scan the QR code or visit [www.illumina.co.uk/emlux-duo](http://www.illumina.co.uk/emlux-duo)

A non-maintained, emergency luminaire for universal applications that can be track or surface mounted, allowing flexibility. Ideal for helping guide occupants safely during an evacuation.

**Note:** Auto Self Test runs periodically, including during the night and automatically carries out all weekly / annual tests



**Emlux Duo** is a flexible Non-maintained Emergency that is Auto Test as standard:



Black surface option

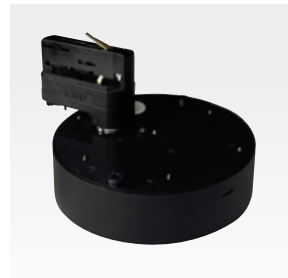


White surface option

Non-maintained: Comes on when the power supply to the lighting fails



Unobtrusive design



Track mounted option



Remote test controller



Surface is BESA mountable

## Options available:

### Lumen output



150

### Body colour



White

Black

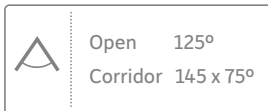
### Surface mount



### Track mount



### Beam angles



Open 125°  
Corridor 145 x 75°

### Body size



1 size

### Control options



DALI 2  
DALI 2

## Specification:

### LED chip / CRI



Nichia  
CRI > 80

### Emergency

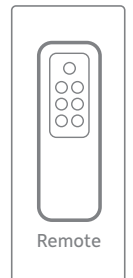


### IP rating



IP  
20

### Accessories



Remote



# Emlux Duo

Caffè Nero / Belfast, Northern Ireland

A premium award winning Italian-influenced coffeehouse company, founded in 1997. Our range of products perfectly enhance their warm and welcoming atmosphere.

# Emlux Twinspot



For further information, technical details and downloads scan the QR code or visit [www.illumina.co.uk/emlux-twinspot](http://www.illumina.co.uk/emlux-twinspot)

A maintained or non-maintained twin head emergency luminaire for universal applications that can be track or surface mounted. Ideal for helping guide occupants safely during an evacuation.



Heads rotate 355° & pivot ±80°

**Emlux Twinspot** is a Maintained and Non-maintained product:

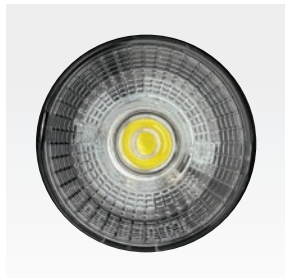


Black body



White body

**Maintained:** Always on and stays on when the power supply to the lighting fails  
**Non-maintained:** Comes on when the power supply to the lighting fails



Adjustable head with 30° beam



Heads rotate 355° & pivot ±80°



Inbuilt status indicator



Track mountable option

## Options available:

Lumen output



Body colour



Track mount



Surface mount



Beam angles



Body size



Vertical mount



## Specification:

LED chip / CRI



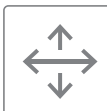
Emergency



IP rating



Adjustable





10

12

A

B

# Emlux Twinspot

Illuma / Castle Donington, UK

Illuma is a leading lighting specialist, manufacturing an extensive range of high-quality commercial and industrial lighting solutions. The Emlux Twinspot was the perfect addition to our warehouse.

# Emlux Discrete



For further information, technical details and downloads scan the **QR code** or visit [www.illumina.co.uk/emlux-discrete](http://www.illumina.co.uk/emlux-discrete)

A small and discreet recessed non-maintained emergency luminaire that is Auto Test/Self Test as standard, is ideal for assisting occupants during the evacuation of spaces.

**Note:** Auto Self Test runs periodically, including during the night and automatically carries out all weekly / annual tests



**Non-maintained:** Comes on when the power supply to the lighting fails

**Emlux Discrete** is a small Non-maintained Emergency that is Auto Test as standard:



Open option 125° lens



Corridor option 145° x 75° lens



White Open option



Black Open option



Remote test controller



Through the hole battery pack

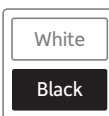
## Options available:

### Lumen output



150

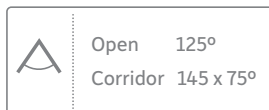
### Body colour



White

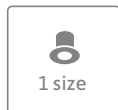
Black

### Beam angles



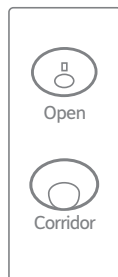
Open 125°  
Corridor 145 x 75°

### Body size



1 size

### Option styles



Open

Corridor

## Specification:

### LED chip / CRI



Edison  
CRI > 80

### Cut-out Ø

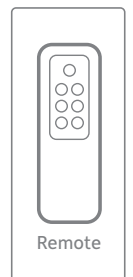


35 mm

### Recessed



### Accessories



Remote

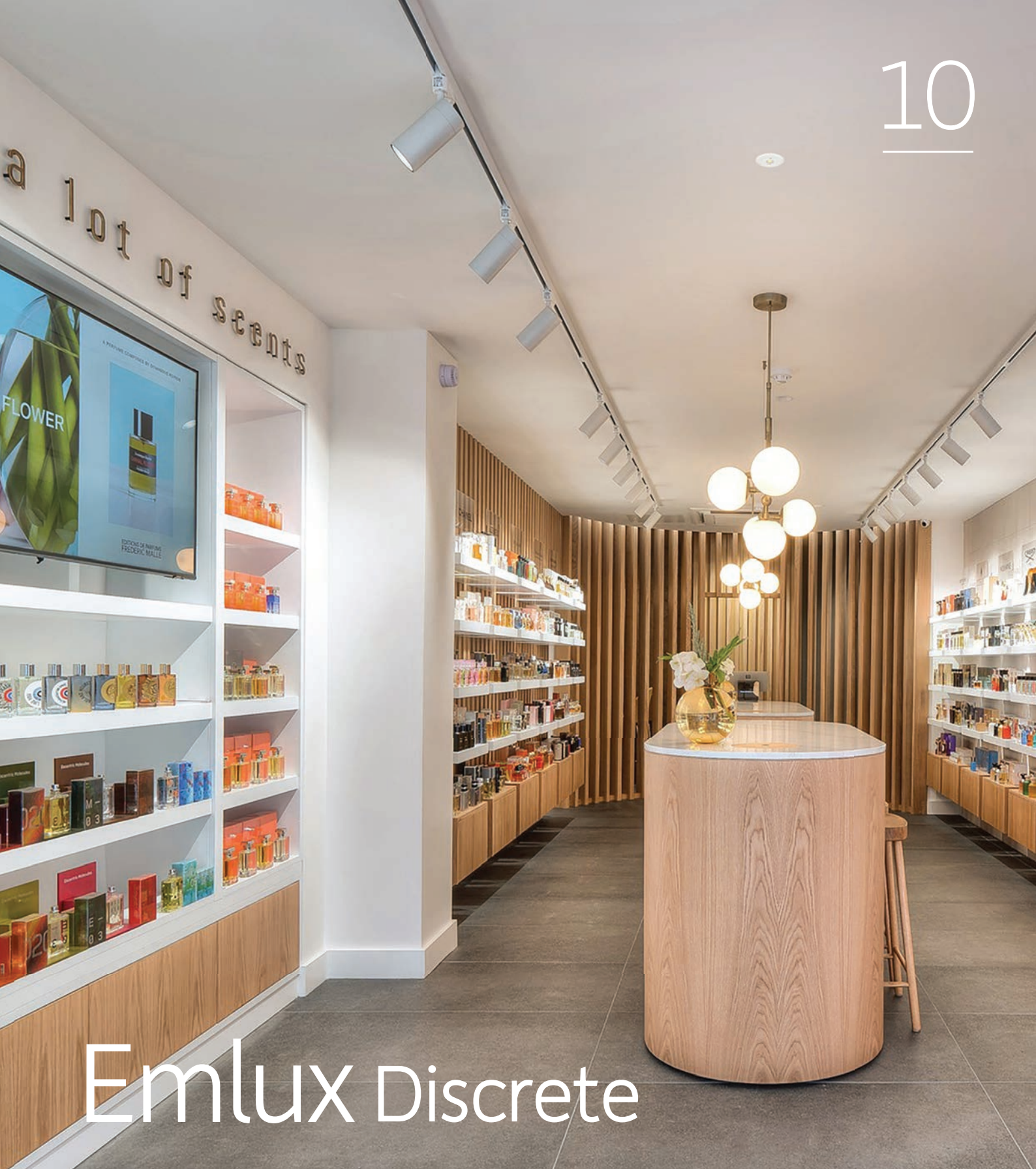
### IP rating



IP  
20

### Emergency





# Emlux Discrete

## Pulse of Perfumery / Knutsford, UK

This dedicated fragrance outlet utilises over 60 years of experience in creating bespoke perfumes and promoting brand names in the UK. It is a welcoming, non-intimidating space where our discreet emergency blends unobtrusively with the décor.

# Emlux Sign



For further information, technical details and downloads scan the QR code or visit [www.illumina.co.uk/emlux-sign](http://www.illumina.co.uk/emlux-sign)

A wide range of maintained or non-maintained emergency escape route signs with a variety of legends. Ideal for helping guide occupants safely during evacuation of spaces.

**Note:** All versions include all legends apart from the Wall version which needs the legend specifying at the point of ordering

**Maintained:**  
Always on and stays on when the power supply to the lighting fails  
**Non-maintained:**  
Comes on when the power supply to the lighting fails



**Emlux Sign** comes in a variety of styles and options:



Wall option



Surface mounted option



Slim profile Bulkhead



Robust clear cover



With included legend applied



Suspended option

## Options available:

### Body colour



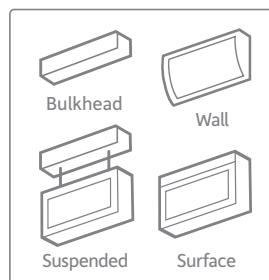
### Surface mount



### Suspended



### Option styles



### Body sizes



### Vertical mount



## Specification:

### LED chip / CRI



### Emergency



### IP rating



Dogwood

Dry Dog Food

# Emlux Sign

## Pets Corner / UK

Pets Corner is an ethical pet care specialist, with over 140 stores across the UK. Its main area of business is selling natural pet foods, accessories and treatments predominantly for dogs and cats, but also for small animals, reptiles, birds, wildlife and tropical / cold-water fish.

# Index by cutout

Cutout (mm)	Recess (mm)	Product range name	Type	Page
35	30	Emlux Discrete	–	162
35	85	Infinia Mini	–	112
36	20	Project 50	Open	104
36	20	Project 50	Baffle	104
42	8	Via	Flush	144
42	8	Camino	Flat	154
46	17	Project 50	Gimbal	104
60	30	Zube Pendant	Mono Point	134
70	75	Project 90 Open	625lm	92
70	105	Project 90 Open	925lm	92
70	75	Project 90 Gimbal	625lm	96
70	105	Project 90 Gimbal	925lm	96
75	105	Project 90 Wallwash	625lm	98
75	140	Project 90 Wallwash	925lm	98
75	105	Project 90 Cone	625lm	94
75	140	Project 90 Cone	925lm	94
75	95	Proseal F	625lm	102
75	130	Proseal F	925lm	102
80	110	Infinia	Round, 900lm & 1200lm	108
80	110	Infinia	Round Trimless, 900lm & 1200lm	108
80 x 80	110	Infinia	Square, 900lm & 1200lm	108
80 x 80	110	Infinia	Square Trimless, 900lm & 1200lm	108
90	30	Disk Pendant	–	136
100	130	Infinia	Round, 2200lm	108
100	130	Infinia	Round Trimless, 2200lm	108
100 x 100	130	Infinia	Square, 2200lm	108
100 x 100	130	Infinia	Square Trimless, 2200lm	108
110	45	Twizzle	–	90
120	150	Highlux 135	Open, 2000lm & 3000lm	118
120	200	Highlux 135	Open, 4000lm	118
120	180	Highlux 135	White Cone, 2000lm & 3000lm	118
120	230	Highlux 135	White Cone, 4000lm	118
120	180	Highlux 135	White Baffle, 2000lm & 3000lm	118

Cutout (mm)	Recess (mm)	Product range name	Type	Page
120	230	Highlux 135	White Baffle, 4000lm	118
120	180	Highlux 135	Black Baffle, 2000lm & 3000lm	118
120	230	Highlux 135	Black Baffle, 4000lm	118
125	165	Infinia	Round, 2600lm	108
125	165	Infinia	Round Trimless, 2600lm	108
125 x 125	165	Infinia	Square, 2600lm	108
125 x 125	165	Infinia	Square Trimless, 2600lm	108
130	165	Highlux 135	Trimless, 2000lm & 3000lm	118
130	215	Highlux 135	Trimless, 4000lm	118
145	150	Highlux 160	2000lm & 3000lm	122
145	200	Highlux 160	4000lm	122
150	125	Arc	Arc 160	114
150	40	Hexseal	2000lm	128
160	190	Highlux 175	–	124
170	55	Lightseal	Mini	130
170 x 170	180	Framelight	Single	116
179 x 179	105	Framelight Mini	–	100
180	115	Twinlux Low Glare	Mini	126
190	165	Arc	Arc 200	114
200	40	Hexseal	3000lm	128
210	55	Lightseal	Maxi	130
210	135	Twinlux Low Glare	Maxi	126
300 x 16	20	Pathfinder	Small	152
320 x 170	180	Framelight	2 Way	116
480 x 170	180	Framelight	3 Way	116
504 x 45	45	Linia Blade R	2300lm	60
600 x 16	20	Pathfinder	Large	152
1170 x 45	45	Linia Blade R	3000lm	60
1190 x 85	80	Linia	–	74

# Index by product code

Product code	Product range name	Page
B	Biline	72
D0	Project 50	104
D102	Twizzle	90
D104	Twizzle	90
D100	Project 90 Open	92
D101	Project 90 Open	92
D12	Project 90 Gimbal	96
D13	Project 90 Wallwash	98
D15	Project 90 Cone	94
D16	Project 90 Cone	94
D17	Project 90 Cone	94
D18	Proseal F	102
D2	Highlux 135	118
D3	Highlux 160	122
D68	Twinlux Low Glare	126
D75	Highlux 175	124
D78	Twinlux Low Glare	126
DA	Arc	114
DFL	Framelight Mini	100
DFS	Framelight	116
DH	Hexseal	128
DL3	Lumaseal	142
DL4	Lumaseal	142
DLE	Lightseal	130
DR1	Infinia Mini	112
DR2	Infinia	108
DR3	Infinia	108
DR4	Infinia	108
DRT	Infinia	108
DS200	Highlux Surface	120
DS209	Infinia	108
DS21	Infinia	108
DS3	Infinia	108

Product code	Product range name	Page
DS4	Infinia	108
DST	Infinia	108
E1	Emlux Sign	164
E2	Emlux Sign	164
E3	Emlux Sign	164
E4	Emlux Sign	164
EMLUX1	Emlux Discrete	162
EMLUX2	Emlux Duo	158
EMLUX3	Emlux Twinspot	160
ES	Signspot	148
HC	Probeam Select	36
HL	Pathfinder	152
L1	Linkline	76
L2	Linkline	76
L4	Linkline	76
L9	Linkline	76
LED21	Via / Camino	144 / 154
LED2C	Camino	154
LED2D	Via	144
LED2E	Via	144
LED2FLA	Camino	154
LED2FLU	Via	144
LED2S	Camino	154
LEDP	Marktrack 24V / Via / Camino	52 / 144 / 154
LN3	Linia Blade T	62
LN5	Linia Blade T	62
LN8	Linia	74
LR	Linia Blade R	60
LS	Linia Blade S	56
LT	Revolva / Biline	70 / 72
P1	Disk Pendant	136
P2	Disk Pendant	136

Product code	Product range name	Page
P3	Disk Pendant	136
PS	Project 50	104
R	Revolva	70
S	Signled	150
T1	1-Circuit 230V	82
T2	1-Circuit 230V	82
T30	Marktrack 24V	52
T31	Topspot E27	50
T32-	1-Circuit 230V	82
T321	Gridspot	32
T322	Gridspot	32
T323	Gridspot	32
T324	Gridspot	32
T325	Rocket E27	48
T326	Rocket E27	48
T328	Rocket E27	48
T33-	1-Circuit 230V	82
T331	Gridspot Anti-Glare	34
T332	Gridspot Anti-Glare	34
T333	Gridspot Anti-Glare	34
T334	Gridspot Anti-Glare	34
T34	Lumapar	44
T35(	1-Circuit 230V	82
T351	Probeam	40
T352	Probeam Select	36
T36	Prospot	30
T372	Floodline	64
T373	Floodline	64
T374	Floodline	64
T378	Floodline	64
T37F	1-Circuit 230V	82
T38	1-Circuit 230V	82
T39	1-Circuit 230V	82



Product code	Product range name	Page
T4-	1-Circuit 230V	82
T41	Topspot E27	50
T421	Gridspot	32
T422	Gridspot	32
T423	Gridspot	32
T424	Gridspot	32
T425	Rocket E27	48
T426	Rocket E27	48
T428	Rocket E27	48
T43	Gridspot Anti-Glare	34
T44	Lumapar	44
T451	Probeam	40
T452	Probeam Select	36
T46	Prospot	30
T47	Floodline	64
T8	1-Circuit 230V	82
TC	2ube Pendant	134
TD	1-Circuit 230V	82
TF	Probeam Frame	38
TK	Torp	28
TL	Rotaspot	42
TM	Lumapar GU10	46
TP31	Topspot E27	50
TP32	Rocket E27	48
TP34	Lumapar	44
TP41	Topspot E27	50
TP42	Rocket E27	48
TP44	Lumapar	44
TQ31	Quadroled	68
TQ33	Quadroled Linear	66
TQ39	Quadroled Linear	66
TS1	3-Circuit 230V	84
TS21	3-Circuit 230V	84

Product code	Product range name	Page
TS23	3-Circuit 230V	84
TS24	3-Circuit 230V	84
TS29	3-Circuit 230V / Control Track 230V	84 / 86
TS32	3-Circuit 230V / Control Track 230V	84 / 86
TS34	3-Circuit 230V	84
TS35	3-Circuit 230V	84
TS36	3-Circuit 230V	84
TS37	3-Circuit 230V	84
TS38	3-Circuit 230V	84
TS39	3-Circuit 230V	84
TS40	3-Circuit 230V	84
TS41-	3-Circuit 230V / Control Track 230V	84 / 86
TS410	3-Circuit 230V	84
TS42	3-Circuit 230V	84
TS43	3-Circuit 230V	84
TS44	3-Circuit 230V	84
TS6	Control Track 230V	86
TSC	Control Track 230V	86
TSF	3-Circuit 230V	84
TSP	3-Circuit 230V / Control Track 230V	84 / 86
TSV	3-Circuit 230V / Control Track 230V	84 / 86
U2	Disk Wall	138
U3	Upline	140

# Summary

We go to great lengths to ensure that the **environment** you envisage is the effect you achieve.

At **Illuma**, we are dedicated to providing the highest quality lighting solutions /

Our in-house design and product development teams work tirelessly to ensure that every product we create meets our rigorous standards of excellence.

This commitment to **quality** is evident in every aspect of our operations, from sourcing the latest and highest quality materials to designing innovative and award-winning products that set the industry standard.

We understand that our customers demand the very best, and we are committed to meeting their needs /

That's why we put our products through rigorous **testing** to ensure that they meet the highest standards of quality and performance.

We test our products both internally and externally, and we stand behind them with a **5-year** guarantee.

Our commitment to quality is further demonstrated by our adherence to the **ISO 9001** quality assurance system /

We believe that establishing and maintaining an effective **assurance** system is essential to delivering the highest quality products and services to our customers.

That's why we are proud to comply with the **ISO 9001** system, and we believe that it underscores our commitment to our customers.

The lighting industry is constantly changing. That's why we invest in research and development, manufacturing, distribution, human capital, and training /

We understand that unique lighting solutions require a unique team with the technical knowledge to drive our business forward and source **better solutions** for our ever-more demanding environments and market conditions worldwide.

We take pride in being a **British manufacturer**, and we are committed to delivering exceptional products and services to our customers /

We strive to **exceed** expectations in everything we do, and we are always looking for ways to improve our efficiency and performance.

By maximising the efficiency and performance of our products, **we aim** to better serve our customers' requirements and provide them with the very best lighting solutions available /





Sills Road  
 Willow Farm Business Park  
 Castle Donington  
 Derbyshire  
 DE74 2US  
 United Kingdom

///indoors.idea.louder

**T** +44 (0) 1332 818 200  
**F** +44 (0) 1332 818 222  
**E** sales@illumina.co.uk

[www.illumina.co.uk](http://www.illumina.co.uk)



Visit [illumina.co.uk](http://illumina.co.uk)

View C/19D

